

Your Targeting Report

Mailing Campaign Details

01-09-2022

TRIMART RESEARCH CORPORATION

Mailing ID 10QH999180100944692



Thank you for taking advantage of our targeting service - a one stop solution designed to help you get the most out of your Smartmail Marketing™ campaigns.

- Anonymous Precision Targeter users will have their reports saved and accessible for 30 days from the day the report has been generated.
- Signed-In Precision Targeter users will have their reports saved and accessible for 13 months from the day the report has been generated.

Inside, find comprehensive insight into your selected trade area, including:

Variables	<Value 1> : Building Occupancy: Own, Rent
Address Attributes	Houses
Number of Mail Pieces	470992
Urban / Rural	All
Estimated Delivery Cost	\$80068.64
Delivery Mode (Route Type)	Letter Carrier (LC), Rural Route (RR), Suburban Service (SS), General Delivery (GD), Lock Box (LB), Call For (CF), Motorized Route (MR), Direct (DR)
Valid for Mailings From	21-12-17 To 22-01-13
Householder Types	Consumer's Choice

Not only does the attached report provide an in-depth look at your chosen trade area, it also harnesses the power of data analytics to help maximize your return on investment (ROI) by providing you with:

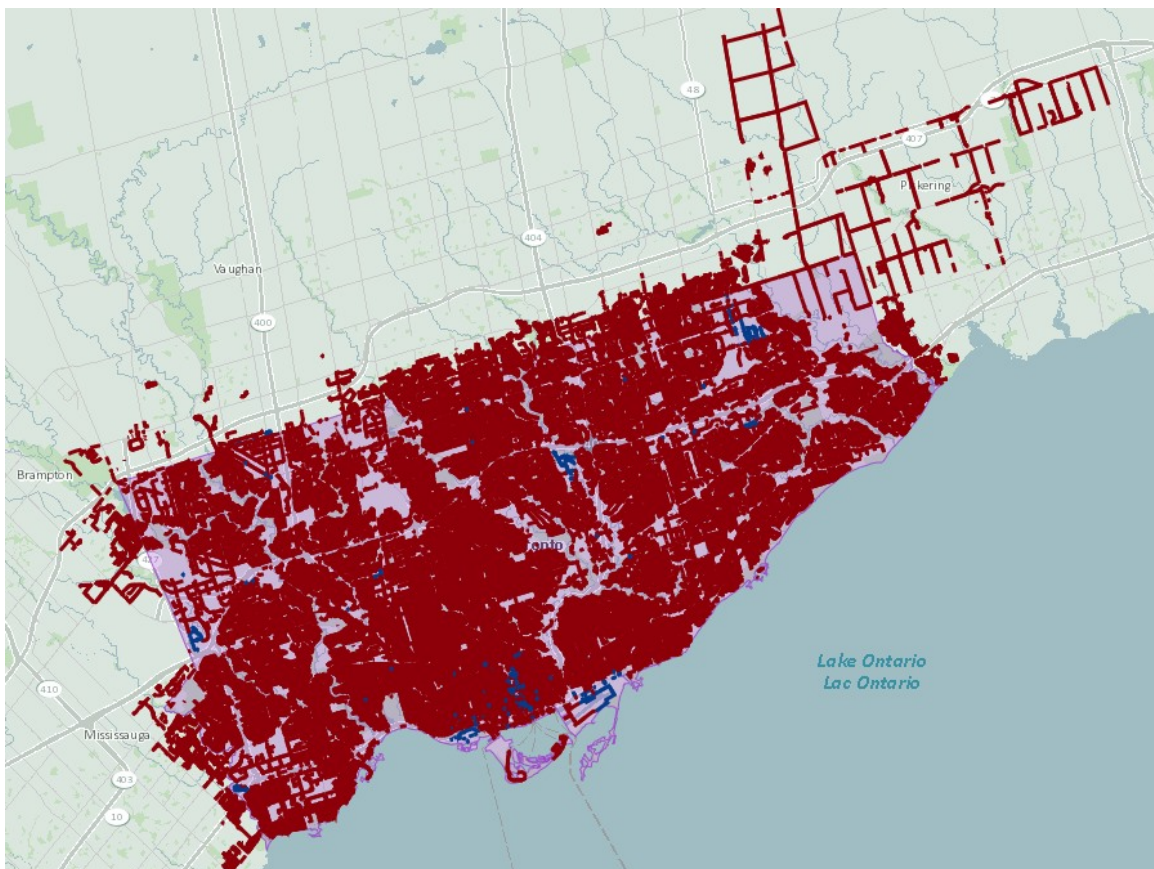
- A Route Ranking report that prioritizes your postal route selections based on your demographic criteria, enabling you to deliver your message to the people most likely to respond;
- A Postal Station Summary report that indicates the facilities responsible for your mailing;
- Maps, Impact Assessment, and many other campaign-enhancing resources.

Do you want to further improve your Smartmail Marketing™? Take advantage of our suite of data and targeting solutions:

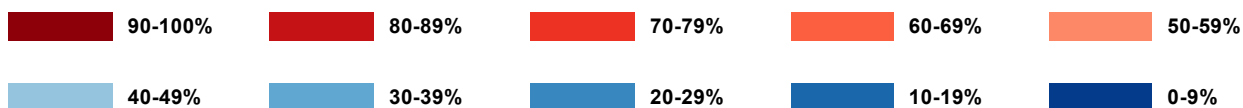
Canada Complete Lists	Data Management Services	Analytics
Canada Complete lists provide one of the largest reach in Canada, drawing from Canada Post's mail delivery database of over 13 million residential addresses and close to a million business addresses. With our additional targeting filters, supplement your list by pinpointing specific audiences that best match what your best prospects look like.	With the help of Canada Post's Data Management Services, you can improve your address accuracy, identify movers, and suppress duplicate records. This will ensure clean, current, and accurate mail files - in doing so, you will have less undeliverable mail and an improved ROI.	Our analytics experts will work with you to ensure your consumer data delivers optimal results. For example, we can help identify highest-potential customers and prospects through penetration analysis, location intelligence, segmentation, modeling and profiling.

Questions? Contact your Canada Post Sales Representative or our Commercial Service Network at 1-866-757-5480.

Reaching the right people with the right message is a key driver of campaign success. The map below shows your selected trade area and the routes that make up your coverage. The routes are colour coded according to the penetration of your selected demographic variable(s) to show how closely it matches your ideal prospect.



Legend - Demographic Variable Penetration



Your Targeting Report

Route Ranking Report



Below you will find your Route Ranking Report, which provides you with a tabular view of the routes within your trade area ranked according to the value of the selected demographic variable(s). By looking at the "Cumulative Penetration" and the "Cumulative Points of Call" columns, you can easily determine which routes you need to target in order to meet your desired quota.

TRIMART RESEARCH CORPORATION

FSA	Delivery Mode (Route)	Depot	All Points Of Call	Value 1 (%)	Avg Value	Cumulative Points of Call	Cumulative Penetration
L1V	LC0003	PICKERING LCD MAIN	638	100	100	638	100
L1V	LC0007	PICKERING LCD MAIN	622	100	100	1260	100
L1V	LC0016	PICKERING LCD MAIN	1024	100	100	2284	100
L1W	LC0021	PICKERING LCD MAIN	348	100	100	2632	100
L1W	LC0023	PICKERING LCD MAIN	383	100	100	3015	100
L1W	LC0025	PICKERING LCD MAIN	343	100	100	3358	100
L1X	RR0001	PICKERING LCD MAIN	310	100	100	3668	100
L1X	SS0104	PICKERING LCD MAIN	253	100	100	3921	100
L3S	SS0204	UNIONVILLE LCD 2	845	100	100	4766	100
L3S	SS0205	UNIONVILLE LCD 2	725	100	100	5491	100
L3S	SS0207	UNIONVILLE LCD 2	860	100	100	6351	100
L3S	SS0208	UNIONVILLE LCD 2	859	100	100	7210	100
L3S	SS0210	UNIONVILLE LCD 2	794	100	100	8004	100
L3S	SS0211	UNIONVILLE LCD 2	734	100	100	8738	100
L3S	SS0212	UNIONVILLE LCD 2	619	100	100	9357	100
L3S	SS0213	UNIONVILLE LCD 2	883	100	100	10240	100
L3S	SS0215	UNIONVILLE LCD 2	944	100	100	11184	100
L6B	SS0217	UNIONVILLE LCD 2	730	100	100	11914	100
L3R	LC0010	UNIONVILLE LCD 1	294	100	100	12208	100
L3R	LC0012	UNIONVILLE LCD 1	162	100	100	12370	100
L3R	LC0013	UNIONVILLE LCD 1	339	100	100	12709	100
L3R	LC0015	UNIONVILLE LCD 1	279	100	100	12988	100
L3R	LC0019	UNIONVILLE LCD 1	382	100	100	13370	100
L3R	LC0021	UNIONVILLE LCD 1	338	100	100	13708	100
L3R	LC0027	UNIONVILLE LCD 1	335	100	100	14043	100
L3R	LC0029	UNIONVILLE LCD 1	417	100	100	14460	100
L3R	LC0033	UNIONVILLE LCD 1	156	100	100	14616	100
L3R	SS0906	UNIONVILLE LCD 1	866	100	100	15482	100
L3R	SS0907	UNIONVILLE LCD 1	216	100	100	15698	100
L3R	SS0908	UNIONVILLE LCD 1	832	100	100	16530	100
L3R	SS0909	UNIONVILLE LCD 1	161	100	100	16691	100
L3R	LB0001	MARKHAM RPO WARDEN CENTRE	38	100	100	16729	100
L3T	LB0001	THORNHILL RPO THORNHILL EAST	10	100	100	16739	100
L4J	LC0200	THORNHILL LCD MAIN	453	100	100	17192	100
L4J	LC0201	THORNHILL LCD MAIN	429	100	100	17621	100
L4J	LC0202	THORNHILL LCD MAIN	634	100	100	18255	100
L4J	LC0203	THORNHILL LCD MAIN	605	100	100	18860	100
L4J	LC0205	THORNHILL LCD MAIN	41	100	100	18901	100
L4J	LC0206	THORNHILL LCD MAIN	298	100	100	19199	100

FSA	Delivery Mode (Route)	Depot	All Points Of Call	Value 1 (%)	Avg Value	Cumulative Points of Call	Cumulative Penetration
L4J	LC0207	THORNHILL LCD MAIN	590	100	100	19789	100
L4J	LC0208	THORNHILL LCD MAIN	321	100	100	20110	100
L4J	LC0212	THORNHILL LCD MAIN	339	100	100	20449	100
L4J	LC0213	THORNHILL LCD MAIN	553	100	100	21002	100
L4J	LC0214	THORNHILL LCD MAIN	614	100	100	21616	100
L4J	LC0215	THORNHILL LCD MAIN	513	100	100	22129	100
L3T	LC0201	THORNHILL LCD 20	566	100	100	22695	100
L3T	LC0202	THORNHILL LCD 20	424	100	100	23119	100
L3T	LC0203	THORNHILL LCD 20	476	100	100	23595	100
L3T	LC0204	THORNHILL LCD 20	771	100	100	24366	100
L3T	LC0206	THORNHILL LCD 20	66	100	100	24432	100
L3T	LC0207	THORNHILL LCD 20	690	100	100	25122	100
L3T	LC0208	THORNHILL LCD 20	843	100	100	25965	100
L3T	LC0210	THORNHILL LCD 20	850	100	100	26815	100
L4K	LC0101	CONCORD STN MAIN	210	100	100	27025	100
L4K	LC0103	CONCORD STN MAIN	129	100	100	27154	100
L4K	LC0105	CONCORD STN MAIN	164	100	100	27318	100
L4K	LC0107	CONCORD STN MAIN	203	100	100	27521	100
L4K	LC0109	CONCORD STN MAIN	127	100	100	27648	100
L4K	LB0001	CONCORD RPO GLEN SHEILDS	2	100	100	27650	100
L4H	SS0934	WOODBRIIDGE STN MAIN	238	100	100	27888	100
L4L	LC0003	WOODBRIIDGE STN MAIN	100	100	100	27988	100
L4L	LC0027	WOODBRIIDGE STN MAIN	324	100	100	28312	100
L4L	SS0933	WOODBRIIDGE STN MAIN	0	100	100	28312	100
L4W	LC0207	MISSISSAUGA LCD 2	154	100	100	28466	100
L4W	LC0209	MISSISSAUGA LCD 2	0	100	100	28466	100
L4W	LC0215	MISSISSAUGA LCD 2	99	100	100	28565	100
L4W	LC0219	MISSISSAUGA LCD 2	75	100	100	28640	100
L4W	LC0233	MISSISSAUGA LCD 2	465	100	100	29105	100
L4W	LC0235	MISSISSAUGA LCD 2	277	100	100	29382	100
L4W	LC0237	MISSISSAUGA LCD 2	503	100	100	29885	100
L4W	LC0239	MISSISSAUGA LCD 2	107	100	100	29992	100
L4W	LC0241	MISSISSAUGA LCD 2	401	100	100	30393	100
L4X	LC0204	MISSISSAUGA LCD 2	316	100	100	30709	100
L4X	LC0206	MISSISSAUGA LCD 2	209	100	100	30918	100
L4X	LC0210	MISSISSAUGA LCD 2	99	100	100	31017	100
L4X	LC0212	MISSISSAUGA LCD 2	261	100	100	31278	100
L4X	LC0214	MISSISSAUGA LCD 2	109	100	100	31387	100
L4X	LC0218	MISSISSAUGA LCD 2	294	100	100	31681	100
L4X	LC0227	MISSISSAUGA LCD 2	0	100	100	31681	100
L4X	LC0234	MISSISSAUGA LCD 2	157	100	100	31838	100
L4X	LC0235	MISSISSAUGA LCD 2	98	100	100	31936	100
L4X	LC0236	MISSISSAUGA LCD 2	69	100	100	32005	100
L4X	LC0238	MISSISSAUGA LCD 2	118	100	100	32123	100
L4X	LC0239	MISSISSAUGA LCD 2	210	100	100	32333	100
L4X	LC0240	MISSISSAUGA LCD 2	178	100	100	32511	100
L4X	LC0242	MISSISSAUGA LCD 2	134	100	100	32645	100
L4X	LC0244	MISSISSAUGA LCD 2	0	100	100	32645	100
L4X	LC0246	MISSISSAUGA LCD 2	0	100	100	32645	100

FSA	Delivery Mode (Route)	Depot	All Points Of Call	Value 1 (%)	Avg Value	Cumulative Points of Call	Cumulative Penetration
L4X	LC0256	MISSISSAUGA LCD 2	84	100	100	32729	100
L5E	LC0148	MISSISSAUGA STN PORT CREDIT	203	100	100	32932	100
L5E	LC0149	MISSISSAUGA STN PORT CREDIT	202	100	100	33134	100
L5E	LC0151	MISSISSAUGA STN PORT CREDIT	345	100	100	33479	100
L5E	LC0154	MISSISSAUGA STN PORT CREDIT	377	100	100	33856	100
L5E	LC0156	MISSISSAUGA STN PORT CREDIT	362	100	100	34218	100
L5E	LC0158	MISSISSAUGA STN PORT CREDIT	57	100	100	34275	100
L4T	LC0101	MISSISSAUGA LCD MALTON	473	100	100	34748	100
L4T	LC0103	MISSISSAUGA LCD MALTON	437	100	100	35185	100
L4T	LC0104	MISSISSAUGA LCD MALTON	509	100	100	35694	100
L4T	LC0105	MISSISSAUGA LCD MALTON	618	100	100	36312	100
L4T	LC0106	MISSISSAUGA LCD MALTON	471	100	100	36783	100
L4T	LC0107	MISSISSAUGA LCD MALTON	360	100	100	37143	100
L4T	LC0109	MISSISSAUGA LCD MALTON	391	100	100	37534	100
L4T	LC0117	MISSISSAUGA LCD MALTON	194	100	100	37728	100
L4T	LC0120	MISSISSAUGA LCD MALTON	0	100	100	37728	100
L4V	LC0122	MISSISSAUGA LCD MALTON	0	100	100	37728	100
L6T	SS0501	BRAMPTON LCD B	133	100	100	37861	100
M1B	LB0001	SCARBOROUGH RPO MILNER	18	100	100	37879	100
M1B	LC0200	TORONTO LCD MALVERN	452	100	100	38331	100
M1B	LC0201	TORONTO LCD MALVERN	334	100	100	38665	100
M1B	LC0202	TORONTO LCD MALVERN	527	100	100	39192	100
M1B	LC0203	TORONTO LCD MALVERN	573	100	100	39765	100
M1B	LC0204	TORONTO LCD MALVERN	557	100	100	40322	100
M1B	LC0205	TORONTO LCD MALVERN	187	100	100	40509	100
M1B	LC0206	TORONTO LCD MALVERN	708	100	100	41217	100
M1B	LC0207	TORONTO LCD MALVERN	444	100	100	41661	100
M1B	LC0208	TORONTO LCD MALVERN	501	100	100	42162	100
M1B	LC0209	TORONTO LCD MALVERN	607	100	100	42769	100
M1B	LC0210	TORONTO LCD MALVERN	600	100	100	43369	100
M1B	LC0211	TORONTO LCD MALVERN	285	100	100	43654	100
M1B	LC0212	TORONTO LCD MALVERN	801	100	100	44455	100
M1B	LC0213	TORONTO LCD MALVERN	648	100	100	45103	100
M1B	LC0214	TORONTO LCD MALVERN	589	100	100	45692	100
M1B	LC0215	TORONTO LCD MALVERN	144	100	100	45836	100
M1B	LC0216	TORONTO LCD MALVERN	525	100	100	46361	100
M1B	LC0217	TORONTO LCD MALVERN	704	100	100	47065	100
M1B	LC0218	TORONTO LCD MALVERN	168	100	100	47233	100
M1B	LC0219	TORONTO LCD MALVERN	749	100	100	47982	100
M1B	LC0220	TORONTO LCD MALVERN	535	100	100	48517	100
M1B	LC0221	TORONTO LCD MALVERN	658	100	100	49175	100
M1B	LC0222	TORONTO LCD MALVERN	10	100	100	49185	100
M1B	LC0223	TORONTO LCD MALVERN	498	100	100	49683	100
M1B	SS0101	TORONTO LCD MALVERN	805	100	100	50488	100
M1B	SS0102	TORONTO LCD MALVERN	571	100	100	51059	100

FSA	Delivery Mode (Route)	Depot	All Points Of Call	Value 1 (%)	Avg Value	Cumulative Points of Call	Cumulative Penetration
M1B	SS0103	TORONTO LCD MALVERN	768	100	100	51827	100
M1B	SS0104	TORONTO LCD MALVERN	647	100	100	52474	100
M1B	LB0001	SCARBOROUGH RPO ABBY LANE	32	100	100	52506	100
M1C	LB0001	SCARBOROUGH RPO RAVINE PARK PLA	50	100	100	52556	100
M1E	LB0001	SCARBOROUGH RPO GUILDWOOD PLAZA	13	100	100	52569	100
M1C	LC0401	TORONTO LCD WEST HILL	323	100	100	52892	100
M1C	LC0402	TORONTO LCD WEST HILL	599	100	100	53491	100
M1C	LC0403	TORONTO LCD WEST HILL	313	100	100	53804	100
M1C	LC0404	TORONTO LCD WEST HILL	471	100	100	54275	100
M1C	LC0405	TORONTO LCD WEST HILL	285	100	100	54560	100
M1C	LC0406	TORONTO LCD WEST HILL	725	100	100	55285	100
M1C	LC0407	TORONTO LCD WEST HILL	590	100	100	55875	100
M1C	LC0408	TORONTO LCD WEST HILL	573	100	100	56448	100
M1C	LC0409	TORONTO LCD WEST HILL	365	100	100	56813	100
M1C	LC0410	TORONTO LCD WEST HILL	686	100	100	57499	100
M1C	LC0411	TORONTO LCD WEST HILL	348	100	100	57847	100
M1C	LC0412	TORONTO LCD WEST HILL	306	100	100	58153	100
M1C	LC0413	TORONTO LCD WEST HILL	289	100	100	58442	100
M1C	LC0414	TORONTO LCD WEST HILL	462	100	100	58904	100
M1C	LC0415	TORONTO LCD WEST HILL	340	100	100	59244	100
M1C	LC0416	TORONTO LCD WEST HILL	553	100	100	59797	100
M1C	LC0417	TORONTO LCD WEST HILL	309	100	100	60106	100
M1C	LC0418	TORONTO LCD WEST HILL	303	100	100	60409	100
M1C	LC0419	TORONTO LCD WEST HILL	340	100	100	60749	100
M1C	LC0420	TORONTO LCD WEST HILL	559	100	100	61308	100
M1C	LC0422	TORONTO LCD WEST HILL	439	100	100	61747	100
M1C	LC0423	TORONTO LCD WEST HILL	315	100	100	62062	100
M1C	LC0424	TORONTO LCD WEST HILL	427	100	100	62489	100
M1C	LC0426	TORONTO LCD WEST HILL	173	100	100	62662	100
M1C	LC0427	TORONTO LCD WEST HILL	60	100	100	62722	100
M1E	LC0421	TORONTO LCD WEST HILL	390	100	100	63112	100
M1E	LC0425	TORONTO LCD WEST HILL	369	100	100	63481	100
M1E	LC0427	TORONTO LCD WEST HILL	185	100	100	63666	100
M1E	LC0428	TORONTO LCD WEST HILL	390	100	100	64056	100
M1E	LC0429	TORONTO LCD WEST HILL	385	100	100	64441	100
M1E	LC0430	TORONTO LCD WEST HILL	569	100	100	65010	100
M1E	LC0431	TORONTO LCD WEST HILL	296	100	100	65306	100
M1E	LC0432	TORONTO LCD WEST HILL	356	100	100	65662	100
M1E	LC0433	TORONTO LCD WEST HILL	311	100	100	65973	100
M1E	LC0434	TORONTO LCD WEST HILL	435	100	100	66408	100
M1E	LC0435	TORONTO LCD WEST HILL	311	100	100	66719	100
M1E	LC0436	TORONTO LCD WEST HILL	417	100	100	67136	100
M1E	LC0437	TORONTO LCD WEST HILL	312	100	100	67448	100
M1E	LC0438	TORONTO LCD WEST HILL	354	100	100	67802	100
M1E	LC0439	TORONTO LCD WEST HILL	196	100	100	67998	100
M1E	LC0440	TORONTO LCD WEST HILL	253	100	100	68251	100
M1E	LC0441	TORONTO LCD WEST HILL	409	100	100	68660	100

FSA	Delivery Mode (Route)	Depot	All Points Of Call	Value 1 (%)	Avg Value	Cumulative Points of Call	Cumulative Penetration
M1E	LC0442	TORONTO LCD WEST HILL	422	100	100	69082	100
M1E	LC0443	TORONTO LCD WEST HILL	400	100	100	69482	100
M1E	LC0444	TORONTO LCD WEST HILL	239	100	100	69721	100
M1E	LC0445	TORONTO LCD WEST HILL	316	100	100	70037	100
M1E	LC0446	TORONTO LCD WEST HILL	316	100	100	70353	100
M1E	LC0447	TORONTO LCD WEST HILL	418	100	100	70771	100
M1E	LC0448	TORONTO LCD WEST HILL	562	100	100	71333	100
M1E	LC0449	TORONTO LCD WEST HILL	78	100	100	71411	100
M1E	LC0450	TORONTO LCD WEST HILL	409	100	100	71820	100
M1E	LC0451	TORONTO LCD WEST HILL	407	100	100	72227	100
M1E	LC0452	TORONTO LCD WEST HILL	350	100	100	72577	100
M1E	LB0001	SCARBOROUGH RPO MORNINGSIDE	56	100	100	72633	100
M1G	LB0001	SCARBOROUGH RPO ORTON PARK	4	100	100	72637	100
M1G	LC0701	SCARBOROUGH LCD C	370	100	100	73007	100
M1G	LC0702	SCARBOROUGH LCD C	349	100	100	73356	100
M1G	LC0703	SCARBOROUGH LCD C	264	100	100	73620	100
M1G	LC0704	SCARBOROUGH LCD C	422	100	100	74042	100
M1G	LC0705	SCARBOROUGH LCD C	292	100	100	74334	100
M1G	LC0706	SCARBOROUGH LCD C	228	100	100	74562	100
M1G	LC0708	SCARBOROUGH LCD C	385	100	100	74947	100
M1G	LC0709	SCARBOROUGH LCD C	220	100	100	75167	100
M1G	LC0711	SCARBOROUGH LCD C	382	100	100	75549	100
M1G	LC0712	SCARBOROUGH LCD C	320	100	100	75869	100
M1G	LC0713	SCARBOROUGH LCD C	195	100	100	76064	100
M1G	LC0714	SCARBOROUGH LCD C	331	100	100	76395	100
M1G	LC0716	SCARBOROUGH LCD C	346	100	100	76741	100
M1G	LC0717	SCARBOROUGH LCD C	331	100	100	77072	100
M1G	LC0719	SCARBOROUGH LCD C	160	100	100	77232	100
M1G	LC0722	SCARBOROUGH LCD C	254	100	100	77486	100
M1G	LC0726	SCARBOROUGH LCD C	0	100	100	77486	100
M1H	LC0704	SCARBOROUGH LCD C	18	100	100	77504	100
M1H	LC0706	SCARBOROUGH LCD C	0	100	100	77504	100
M1H	LC0707	SCARBOROUGH LCD C	147	100	100	77651	100
M1H	LC0710	SCARBOROUGH LCD C	293	100	100	77944	100
M1H	LC0712	SCARBOROUGH LCD C	32	100	100	77976	100
M1H	LC0713	SCARBOROUGH LCD C	0	100	100	77976	100
M1H	LC0715	SCARBOROUGH LCD C	359	100	100	78335	100
M1H	LC0716	SCARBOROUGH LCD C	0	100	100	78335	100
M1H	LC0717	SCARBOROUGH LCD C	0	100	100	78335	100
M1H	LC0718	SCARBOROUGH LCD C	429	100	100	78764	100
M1H	LC0720	SCARBOROUGH LCD C	0	100	100	78764	100
M1H	LC0721	SCARBOROUGH LCD C	172	100	100	78936	100
M1H	LC0722	SCARBOROUGH LCD C	81	100	100	79017	100
M1H	LC0723	SCARBOROUGH LCD C	209	100	100	79226	100
M1H	LC0724	SCARBOROUGH LCD C	190	100	100	79416	100
M1H	LC0725	SCARBOROUGH LCD C	436	100	100	79852	100
M1H	LC0726	SCARBOROUGH LCD C	476	100	100	80328	100
M1H	LC0727	SCARBOROUGH LCD C	280	100	100	80608	100

FSA	Delivery Mode (Route)	Depot	All Points Of Call	Value 1 (%)	Avg Value	Cumulative Points of Call	Cumulative Penetration
M1H	LC0728	SCARBOROUGH LCD C	268	100	100	80876	100
M1H	LB0001	SCARBOROUGH RPO CEDAR HEIGHTS	108	100	100	80984	100
M1H	LB0001	SCARBOROUGH RPO MCCOWAN SQUARE	11	100	100	80995	100
M1J	LB0001	SCARBOROUGH RPO MCCOWAN	20	100	100	81015	100
M1J	LC0005	SCARBOROUGH LCD 11	0	100	100	81015	100
M1J	LC0012	SCARBOROUGH LCD 11	0	100	100	81015	100
M1J	LC0030	SCARBOROUGH LCD 11	297	100	100	81312	100
M1J	LC0031	SCARBOROUGH LCD 11	183	100	100	81495	100
M1J	LC0032	SCARBOROUGH LCD 11	194	100	100	81689	100
M1J	LC0033	SCARBOROUGH LCD 11	197	100	100	81886	100
M1J	LC0034	SCARBOROUGH LCD 11	330	100	100	82216	100
M1J	LC0035	SCARBOROUGH LCD 11	253	100	100	82469	100
M1J	LC0036	SCARBOROUGH LCD 11	319	100	100	82788	100
M1J	LC0038	SCARBOROUGH LCD 11	330	100	100	83118	100
M1J	LC0045	SCARBOROUGH LCD 11	356	100	100	83474	100
M1J	LC0047	SCARBOROUGH LCD 11	318	100	100	83792	100
M1J	LC0049	SCARBOROUGH LCD 11	349	100	100	84141	100
M1J	LC0050	SCARBOROUGH LCD 11	375	100	100	84516	100
M1J	LC0051	SCARBOROUGH LCD 11	278	100	100	84794	100
M1J	LC0052	SCARBOROUGH LCD 11	329	100	100	85123	100
M1J	LC0054	SCARBOROUGH LCD 11	313	100	100	85436	100
M1J	LC0056	SCARBOROUGH LCD 11	0	100	100	85436	100
M1J	LC0058	SCARBOROUGH LCD 11	0	100	100	85436	100
M1J	LC0060	SCARBOROUGH LCD 11	82	100	100	85518	100
M1J	LC0062	SCARBOROUGH LCD 11	0	100	100	85518	100
M1J	LC0084	SCARBOROUGH LCD 11	0	100	100	85518	100
M1K	LC0053	SCARBOROUGH LCD 11	266	100	100	85784	100
M1K	LC0055	SCARBOROUGH LCD 11	354	100	100	86138	100
M1K	LC0056	SCARBOROUGH LCD 11	301	100	100	86439	100
M1K	LC0057	SCARBOROUGH LCD 11	327	100	100	86766	100
M1K	LC0058	SCARBOROUGH LCD 11	309	100	100	87075	100
M1K	LC0059	SCARBOROUGH LCD 11	363	100	100	87438	100
M1K	LC0060	SCARBOROUGH LCD 11	318	100	100	87756	100
M1K	LC0061	SCARBOROUGH LCD 11	344	100	100	88100	100
M1K	LC0062	SCARBOROUGH LCD 11	371	100	100	88471	100
M1K	LC0063	SCARBOROUGH LCD 11	334	100	100	88805	100
M1K	LC0064	SCARBOROUGH LCD 11	283	100	100	89088	100
M1K	LC0065	SCARBOROUGH LCD 11	342	100	100	89430	100
M1K	LC0066	SCARBOROUGH LCD 11	323	100	100	89753	100
M1K	LC0067	SCARBOROUGH LCD 11	280	100	100	90033	100
M1K	LC0068	SCARBOROUGH LCD 11	387	100	100	90420	100
M1K	LC0069	SCARBOROUGH LCD 11	237	100	100	90657	100
M1K	LC0070	SCARBOROUGH LCD 11	358	100	100	91015	100
M1K	LC0071	SCARBOROUGH LCD 11	320	100	100	91335	100
M1K	LC0072	SCARBOROUGH LCD 11	336	100	100	91671	100
M1K	LC0074	SCARBOROUGH LCD 11	307	100	100	91978	100
M1K	LC0076	SCARBOROUGH LCD 11	403	100	100	92381	100

FSA	Delivery Mode (Route)	Depot	All Points Of Call	Value 1 (%)	Avg Value	Cumulative Points of Call	Cumulative Penetration
M1K	LC0078	SCARBOROUGH LCD 11	297	100	100	92678	100
M1K	LC0080	SCARBOROUGH LCD 11	350	100	100	93028	100
M1K	LC0082	SCARBOROUGH LCD 11	46	100	100	93074	100
M1K	LC0084	SCARBOROUGH LCD 11	0	100	100	93074	100
M1L	LC0039	SCARBOROUGH LCD 11	350	100	100	93424	100
M1L	LC0041	SCARBOROUGH LCD 11	380	100	100	93804	100
M1L	LC0043	SCARBOROUGH LCD 11	326	100	100	94130	100
M1L	LC0044	SCARBOROUGH LCD 11	0	100	100	94130	100
M1L	LC0046	SCARBOROUGH LCD 11	287	100	100	94417	100
M1L	LC0048	SCARBOROUGH LCD 11	376	100	100	94793	100
M1L	LC0073	SCARBOROUGH LCD 11	112	100	100	94905	100
M1L	LC0075	SCARBOROUGH LCD 11	111	100	100	95016	100
M1L	LC0077	SCARBOROUGH LCD 11	312	100	100	95328	100
M1L	LC0079	SCARBOROUGH LCD 11	414	100	100	95742	100
M1L	LC0081	SCARBOROUGH LCD 11	570	100	100	96312	100
M1L	LC0083	SCARBOROUGH LCD 11	229	100	100	96541	100
M1L	LC0085	SCARBOROUGH LCD 11	283	100	100	96824	100
M1L	LC0086	SCARBOROUGH LCD 11	545	100	100	97369	100
M1L	LC0087	SCARBOROUGH LCD 11	435	100	100	97804	100
M1L	LC0088	SCARBOROUGH LCD 11	300	100	100	98104	100
M1L	LC0089	SCARBOROUGH LCD 11	873	100	100	98977	100
M1L	LC0090	SCARBOROUGH LCD 11	522	100	100	99499	100
M1M	LC0001	SCARBOROUGH LCD 11	332	100	100	99831	100
M1M	LC0002	SCARBOROUGH LCD 11	321	100	100	100152	100
M1M	LC0003	SCARBOROUGH LCD 11	303	100	100	100455	100
M1M	LC0004	SCARBOROUGH LCD 11	181	100	100	100636	100
M1M	LC0005	SCARBOROUGH LCD 11	275	100	100	100911	100
M1M	LC0006	SCARBOROUGH LCD 11	338	100	100	101249	100
M1M	LC0007	SCARBOROUGH LCD 11	283	100	100	101532	100
M1M	LC0008	SCARBOROUGH LCD 11	196	100	100	101728	100
M1M	LC0009	SCARBOROUGH LCD 11	369	100	100	102097	100
M1M	LC0010	SCARBOROUGH LCD 11	541	100	100	102638	100
M1M	LC0011	SCARBOROUGH LCD 11	336	100	100	102974	100
M1M	LC0012	SCARBOROUGH LCD 11	335	100	100	103309	100
M1M	LC0013	SCARBOROUGH LCD 11	209	100	100	103518	100
M1M	LC0014	SCARBOROUGH LCD 11	377	100	100	103895	100
M1M	LC0015	SCARBOROUGH LCD 11	361	100	100	104256	100
M1M	LC0016	SCARBOROUGH LCD 11	318	100	100	104574	100
M1M	LC0018	SCARBOROUGH LCD 11	285	100	100	104859	100
M1M	LC0020	SCARBOROUGH LCD 11	0	100	100	104859	100
M1M	LC0030	SCARBOROUGH LCD 11	0	100	100	104859	100
M1N	LC0011	SCARBOROUGH LCD 11	47	100	100	104906	100
M1N	LC0013	SCARBOROUGH LCD 11	258	100	100	105164	100
M1N	LC0017	SCARBOROUGH LCD 11	129	100	100	105293	100
M1N	LC0019	SCARBOROUGH LCD 11	390	100	100	105683	100
M1N	LC0020	SCARBOROUGH LCD 11	373	100	100	106056	100
M1N	LC0021	SCARBOROUGH LCD 11	517	100	100	106573	100
M1N	LC0022	SCARBOROUGH LCD 11	216	100	100	106789	100
M1N	LC0023	SCARBOROUGH LCD 11	471	100	100	107260	100

FSA	Delivery Mode (Route)	Depot	All Points Of Call	Value 1 (%)	Avg Value	Cumulative Points of Call	Cumulative Penetration
M1N	LC0024	SCARBOROUGH LCD 11	384	100	100	107644	100
M1N	LC0025	SCARBOROUGH LCD 11	316	100	100	107960	100
M1N	LC0026	SCARBOROUGH LCD 11	216	100	100	108176	100
M1N	LC0027	SCARBOROUGH LCD 11	324	100	100	108500	100
M1N	LC0028	SCARBOROUGH LCD 11	348	100	100	108848	100
M1N	LC0029	SCARBOROUGH LCD 11	311	100	100	109159	100
M1N	LC0037	SCARBOROUGH LCD 11	366	100	100	109525	100
M1N	LC0040	SCARBOROUGH LCD 11	461	100	100	109986	100
M1N	LC0042	SCARBOROUGH LCD 11	464	100	100	110450	100
M1N	LC0048	SCARBOROUGH LCD 11	124	100	100	110574	100
M1K	GD0001	SCARBOROUGH STN A	10	100	100	110584	100
M1K	LB0001	SCARBOROUGH STN A	23	100	100	110607	100
M1K	LB0001	SCARBOROUGH RPO EASTOWN CENTRE	49	100	100	110656	100
M1L	LB0001	SCARBOROUGH RPO EGLINTON SQUARE	10	100	100	110666	100
M1M	LB0001	SCARBOROUGH RPO CLIFFCREST SDM	30	100	100	110696	100
M1N	LB0001	SCARBOROUGH RPO TERRY TOWN	38	100	100	110734	100
M1P	LB0001	SCARBOROUGH RPO WHITE SHIELDS	100	100	100	110834	100
M1R	LB0001	SCARBOROUGH PO D	1	100	100	110835	100
M1P	LB0001	SCARBOROUGH RPO TOWN CENTRE	10	100	100	110845	100
M1P	LC0615	SCARBOROUGH LCD D	207	100	100	111052	100
M1P	LC0616	SCARBOROUGH LCD D	247	100	100	111299	100
M1P	LC0617	SCARBOROUGH LCD D	127	100	100	111426	100
M1P	LC0619	SCARBOROUGH LCD D	233	100	100	111659	100
M1P	LC0621	SCARBOROUGH LCD D	285	100	100	111944	100
M1P	LC0623	SCARBOROUGH LCD D	390	100	100	112334	100
M1P	LC0624	SCARBOROUGH LCD D	157	100	100	112491	100
M1P	LC0625	SCARBOROUGH LCD D	625	100	100	113116	100
M1P	LC0626	SCARBOROUGH LCD D	149	100	100	113265	100
M1P	LC0627	SCARBOROUGH LCD D	468	100	100	113733	100
M1P	LC0628	SCARBOROUGH LCD D	350	100	100	114083	100
M1P	LC0629	SCARBOROUGH LCD D	207	100	100	114290	100
M1P	LC0630	SCARBOROUGH LCD D	425	100	100	114715	100
M1P	LC0631	SCARBOROUGH LCD D	63	100	100	114778	100
M1P	LC0632	SCARBOROUGH LCD D	351	100	100	115129	100
M1P	LC0633	SCARBOROUGH LCD D	200	100	100	115329	100
M1P	LC0634	SCARBOROUGH LCD D	330	100	100	115659	100
M1P	LC0635	SCARBOROUGH LCD D	155	100	100	115814	100
M1P	LC0636	SCARBOROUGH LCD D	291	100	100	116105	100
M1P	LC0637	SCARBOROUGH LCD D	78	100	100	116183	100
M1P	LC0638	SCARBOROUGH LCD D	347	100	100	116530	100
M1P	LC0639	SCARBOROUGH LCD D	11	100	100	116541	100
M1P	LC0640	SCARBOROUGH LCD D	263	100	100	116804	100
M1P	LC0642	SCARBOROUGH LCD D	0	100	100	116804	100
M1P	LC0643	SCARBOROUGH LCD D	0	100	100	116804	100
M1P	LC0644	SCARBOROUGH LCD D	236	100	100	117040	100

FSA	Delivery Mode (Route)	Depot	All Points Of Call	Value 1 (%)	Avg Value	Cumulative Points of Call	Cumulative Penetration
M1R	GD0001	SCARBOROUGH LCD D	50	100	100	117090	100
M1R	LC0601	SCARBOROUGH LCD D	93	100	100	117183	100
M1R	LC0602	SCARBOROUGH LCD D	287	100	100	117470	100
M1R	LC0603	SCARBOROUGH LCD D	329	100	100	117799	100
M1R	LC0604	SCARBOROUGH LCD D	289	100	100	118088	100
M1R	LC0605	SCARBOROUGH LCD D	300	100	100	118388	100
M1R	LC0606	SCARBOROUGH LCD D	331	100	100	118719	100
M1R	LC0607	SCARBOROUGH LCD D	178	100	100	118897	100
M1R	LC0608	SCARBOROUGH LCD D	319	100	100	119216	100
M1R	LC0609	SCARBOROUGH LCD D	263	100	100	119479	100
M1R	LC0610	SCARBOROUGH LCD D	154	100	100	119633	100
M1R	LC0611	SCARBOROUGH LCD D	198	100	100	119831	100
M1R	LC0612	SCARBOROUGH LCD D	291	100	100	120122	100
M1R	LC0613	SCARBOROUGH LCD D	318	100	100	120440	100
M1R	LC0614	SCARBOROUGH LCD D	430	100	100	120870	100
M1R	LC0618	SCARBOROUGH LCD D	450	100	100	121320	100
M1R	LC0620	SCARBOROUGH LCD D	383	100	100	121703	100
M1R	LC0622	SCARBOROUGH LCD D	437	100	100	122140	100
M1R	LC0624	SCARBOROUGH LCD D	244	100	100	122384	100
M1R	LC0641	SCARBOROUGH LCD D	354	100	100	122738	100
M1R	LC0643	SCARBOROUGH LCD D	415	100	100	123153	100
M1R	LB0001	SCARBOROUGH RPO PARKWAY MALL	51	100	100	123204	100
M1S	LC0001	TORONTO LCD AGINCOURT	226	100	100	123430	100
M1S	LC0002	TORONTO LCD AGINCOURT	392	100	100	123822	100
M1S	LC0003	TORONTO LCD AGINCOURT	426	100	100	124248	100
M1S	LC0004	TORONTO LCD AGINCOURT	417	100	100	124665	100
M1S	LC0005	TORONTO LCD AGINCOURT	485	100	100	125150	100
M1S	LC0006	TORONTO LCD AGINCOURT	497	100	100	125647	100
M1S	LC0007	TORONTO LCD AGINCOURT	396	100	100	126043	100
M1S	LC0008	TORONTO LCD AGINCOURT	615	100	100	126658	100
M1S	LC0009	TORONTO LCD AGINCOURT	1	100	100	126659	100
M1S	LC0011	TORONTO LCD AGINCOURT	302	100	100	126961	100
M1S	LC0012	TORONTO LCD AGINCOURT	167	100	100	127128	100
M1S	LC0013	TORONTO LCD AGINCOURT	382	100	100	127510	100
M1S	LC0014	TORONTO LCD AGINCOURT	388	100	100	127898	100
M1S	LC0015	TORONTO LCD AGINCOURT	361	100	100	128259	100
M1S	LC0016	TORONTO LCD AGINCOURT	75	100	100	128334	100
M1S	LC0017	TORONTO LCD AGINCOURT	148	100	100	128482	100
M1S	LC0018	TORONTO LCD AGINCOURT	377	100	100	128859	100
M1S	LC0020	TORONTO LCD AGINCOURT	294	100	100	129153	100
M1S	LC0022	TORONTO LCD AGINCOURT	202	100	100	129355	100
M1S	LC0024	TORONTO LCD AGINCOURT	468	100	100	129823	100
M1S	LC0034	TORONTO LCD AGINCOURT	28	100	100	129851	100
M1S	LC0037	TORONTO LCD AGINCOURT	162	100	100	130013	100
M1S	LC0038	TORONTO LCD AGINCOURT	77	100	100	130090	100
M1S	LC0039	TORONTO LCD AGINCOURT	123	100	100	130213	100
M1S	LC0040	TORONTO LCD AGINCOURT	195	100	100	130408	100
M1S	LC0041	TORONTO LCD AGINCOURT	24	100	100	130432	100
M1T	LC0010	TORONTO LCD AGINCOURT	529	100	100	130961	100

FSA	Delivery Mode (Route)	Depot	All Points Of Call	Value 1 (%)	Avg Value	Cumulative Points of Call	Cumulative Penetration
M1T	LC0014	TORONTO LCD AGINCOURT	14	100	100	130975	100
M1T	LC0016	TORONTO LCD AGINCOURT	209	100	100	131184	100
M1T	LC0019	TORONTO LCD AGINCOURT	348	100	100	131532	100
M1T	LC0021	TORONTO LCD AGINCOURT	394	100	100	131926	100
M1T	LC0023	TORONTO LCD AGINCOURT	146	100	100	132072	100
M1T	LC0025	TORONTO LCD AGINCOURT	381	100	100	132453	100
M1T	LC0026	TORONTO LCD AGINCOURT	336	100	100	132789	100
M1T	LC0027	TORONTO LCD AGINCOURT	327	100	100	133116	100
M1T	LC0028	TORONTO LCD AGINCOURT	469	100	100	133585	100
M1T	LC0029	TORONTO LCD AGINCOURT	568	100	100	134153	100
M1T	LC0030	TORONTO LCD AGINCOURT	301	100	100	134454	100
M1T	LC0031	TORONTO LCD AGINCOURT	143	100	100	134597	100
M1T	LC0032	TORONTO LCD AGINCOURT	347	100	100	134944	100
M1T	LC0033	TORONTO LCD AGINCOURT	421	100	100	135365	100
M1T	LC0034	TORONTO LCD AGINCOURT	177	100	100	135542	100
M1T	LC0035	TORONTO LCD AGINCOURT	66	100	100	135608	100
M1T	LC0036	TORONTO LCD AGINCOURT	0	100	100	135608	100
M1T	LC0037	TORONTO LCD AGINCOURT	0	100	100	135608	100
M1T	LC0038	TORONTO LCD AGINCOURT	0	100	100	135608	100
M1T	LC0041	TORONTO LCD AGINCOURT	11	100	100	135619	100
M1S	LB0001	SCARBOROUGH RPO MCCOWAN	48	100	100	135667	100
M1S	LB0001	SCARBOROUGH RPO FINCH-MIDLAND	37	100	100	135704	100
M1T	LB0001	SCARBOROUGH RPO HUNTINGWOOD	10	100	100	135714	100
M1T	LB0001	SCARBOROUGH RPO SHEPPARD PHARM	18	100	100	135732	100
M1T	LB0001	SCARBOROUGH RPO AGINCOURT	65	100	100	135797	100
M1V	LB0001	SCARBOROUGH RPO WOODSIDE SQUARE	108	100	100	135905	100
M1V	LC0301	TORONTO LCD AGINCOURT 4	172	100	100	136077	100
M1V	LC0302	TORONTO LCD AGINCOURT 4	580	100	100	136657	100
M1V	LC0303	TORONTO LCD AGINCOURT 4	238	100	100	136895	100
M1V	LC0304	TORONTO LCD AGINCOURT 4	721	100	100	137616	100
M1V	LC0305	TORONTO LCD AGINCOURT 4	266	100	100	137882	100
M1V	LC0306	TORONTO LCD AGINCOURT 4	688	100	100	138570	100
M1V	LC0307	TORONTO LCD AGINCOURT 4	160	100	100	138730	100
M1V	LC0308	TORONTO LCD AGINCOURT 4	781	100	100	139511	100
M1V	LC0309	TORONTO LCD AGINCOURT 4	280	100	100	139791	100
M1V	LC0310	TORONTO LCD AGINCOURT 4	482	100	100	140273	100
M1V	LC0311	TORONTO LCD AGINCOURT 4	446	100	100	140719	100
M1V	LC0312	TORONTO LCD AGINCOURT 4	611	100	100	141330	100
M1V	LC0313	TORONTO LCD AGINCOURT 4	454	100	100	141784	100
M1V	LC0314	TORONTO LCD AGINCOURT 4	523	100	100	142307	100
M1V	LC0315	TORONTO LCD AGINCOURT 4	310	100	100	142617	100
M1V	LC0316	TORONTO LCD AGINCOURT 4	579	100	100	143196	100
M1V	LC0317	TORONTO LCD AGINCOURT 4	379	100	100	143575	100
M1V	LC0318	TORONTO LCD AGINCOURT 4	587	100	100	144162	100
M1V	LC0319	TORONTO LCD AGINCOURT 4	491	100	100	144653	100

FSA	Delivery Mode (Route)	Depot	All Points Of Call	Value 1 (%)	Avg Value	Cumulative Points of Call	Cumulative Penetration
M1V	LC0320	TORONTO LCD AGINCOURT 4	460	100	100	145113	100
M1V	LC0321	TORONTO LCD AGINCOURT 4	262	100	100	145375	100
M1V	LC0322	TORONTO LCD AGINCOURT 4	448	100	100	145823	100
M1V	LC0323	TORONTO LCD AGINCOURT 4	542	100	100	146365	100
M1V	LC0324	TORONTO LCD AGINCOURT 4	508	100	100	146873	100
M1V	LC0326	TORONTO LCD AGINCOURT 4	0	100	100	146873	100
M1X	SS0105	TORONTO LCD AGINCOURT 4	342	100	100	147215	100
M1X	SS0106	TORONTO LCD AGINCOURT 4	814	100	100	148029	100
M1X	SS0107	TORONTO LCD AGINCOURT 4	854	100	100	148883	100
M1X	SS0108	TORONTO LCD AGINCOURT 4	784	100	100	149667	100
M1X	SS0109	TORONTO LCD AGINCOURT 4	760	100	100	150427	100
M1V	LB0001	SCARBOROUGH RPO MILLIKEN	46	100	100	150473	100
M1W	LC0133	SCARBOROUGH STN F	166	100	100	150639	100
M1W	LC0135	SCARBOROUGH STN F	320	100	100	150959	100
M1W	LC0136	SCARBOROUGH STN F	342	100	100	151301	100
M1W	LC0137	SCARBOROUGH STN F	361	100	100	151662	100
M1W	LC0138	SCARBOROUGH STN F	313	100	100	151975	100
M1W	LC0139	SCARBOROUGH STN F	438	100	100	152413	100
M1W	LC0140	SCARBOROUGH STN F	388	100	100	152801	100
M1W	LC0141	SCARBOROUGH STN F	254	100	100	153055	100
M1W	LC0142	SCARBOROUGH STN F	344	100	100	153399	100
M1W	LC0143	SCARBOROUGH STN F	505	100	100	153904	100
M1W	LC0144	SCARBOROUGH STN F	492	100	100	154396	100
M1W	LC0145	SCARBOROUGH STN F	427	100	100	154823	100
M1W	LC0146	SCARBOROUGH STN F	433	100	100	155256	100
M1W	LC0147	SCARBOROUGH STN F	369	100	100	155625	100
M1W	LC0148	SCARBOROUGH STN F	446	100	100	156071	100
M1W	LC0149	SCARBOROUGH STN F	526	100	100	156597	100
M1W	LC0150	SCARBOROUGH STN F	415	100	100	157012	100
M1W	LC0151	SCARBOROUGH STN F	362	100	100	157374	100
M1W	LC0152	SCARBOROUGH STN F	368	100	100	157742	100
M1W	LC0153	SCARBOROUGH STN F	334	100	100	158076	100
M1W	LC0154	SCARBOROUGH STN F	403	100	100	158479	100
M1W	LC0155	SCARBOROUGH STN F	416	100	100	158895	100
M1W	LC0156	SCARBOROUGH STN F	313	100	100	159208	100
M1W	LC0157	SCARBOROUGH STN F	412	100	100	159620	100
M2J	LC0101	SCARBOROUGH STN F	284	100	100	159904	100
M2J	LC0102	SCARBOROUGH STN F	426	100	100	160330	100
M2J	LC0103	SCARBOROUGH STN F	462	100	100	160792	100
M2J	LC0104	SCARBOROUGH STN F	311	100	100	161103	100
M2J	LC0105	SCARBOROUGH STN F	306	100	100	161409	100
M2J	LC0106	SCARBOROUGH STN F	273	100	100	161682	100
M2J	LC0107	SCARBOROUGH STN F	427	100	100	162109	100
M2J	LC0108	SCARBOROUGH STN F	372	100	100	162481	100
M2J	LC0109	SCARBOROUGH STN F	363	100	100	162844	100
M2J	LC0110	SCARBOROUGH STN F	237	100	100	163081	100
M2J	LC0111	SCARBOROUGH STN F	101	100	100	163182	100
M2J	LC0112	SCARBOROUGH STN F	20	100	100	163202	100
M2J	LC0113	SCARBOROUGH STN F	212	100	100	163414	100

FSA	Delivery Mode (Route)	Depot	All Points Of Call	Value 1 (%)	Avg Value	Cumulative Points of Call	Cumulative Penetration
M2J	LC0114	SCARBOROUGH STN F	280	100	100	163694	100
M2J	LC0115	SCARBOROUGH STN F	172	100	100	163866	100
M2J	LC0116	SCARBOROUGH STN F	254	100	100	164120	100
M2J	LC0117	SCARBOROUGH STN F	192	100	100	164312	100
M2J	LC0118	SCARBOROUGH STN F	145	100	100	164457	100
M2J	LC0119	SCARBOROUGH STN F	38	100	100	164495	100
M2J	LC0120	SCARBOROUGH STN F	127	100	100	164622	100
M2J	LC0121	SCARBOROUGH STN F	0	100	100	164622	100
M2J	LC0122	SCARBOROUGH STN F	140	100	100	164762	100
M2J	LC0123	SCARBOROUGH STN F	399	100	100	165161	100
M2J	LC0124	SCARBOROUGH STN F	234	100	100	165395	100
M2J	LC0125	SCARBOROUGH STN F	188	100	100	165583	100
M2J	LC0126	SCARBOROUGH STN F	142	100	100	165725	100
M2J	LC0127	SCARBOROUGH STN F	161	100	100	165886	100
M2J	LC0128	SCARBOROUGH STN F	360	100	100	166246	100
M2J	LC0129	SCARBOROUGH STN F	252	100	100	166498	100
M2J	LC0130	SCARBOROUGH STN F	324	100	100	166822	100
M2J	LC0131	SCARBOROUGH STN F	327	100	100	167149	100
M2J	LC0132	SCARBOROUGH STN F	285	100	100	167434	100
M2J	LC0134	SCARBOROUGH STN F	160	100	100	167594	100
M2J	LC0158	SCARBOROUGH STN F	48	100	100	167642	100
M2J	LC0159	SCARBOROUGH STN F	93	100	100	167735	100
M1W	LB0001	SCARBOROUGH RPO VILLAGE SQUARE	18	100	100	167753	100
M2H	LC0820	WILLOWDALE LCD 2	448	100	100	168201	100
M2H	LC0822	WILLOWDALE LCD 2	394	100	100	168595	100
M2H	LC0823	WILLOWDALE LCD 2	134	100	100	168729	100
M2H	LC0824	WILLOWDALE LCD 2	322	100	100	169051	100
M2H	LC0825	WILLOWDALE LCD 2	556	100	100	169607	100
M2H	LC0827	WILLOWDALE LCD 2	351	100	100	169958	100
M2H	LC0828	WILLOWDALE LCD 2	482	100	100	170440	100
M2H	LC0829	WILLOWDALE LCD 2	241	100	100	170681	100
M2H	LC0830	WILLOWDALE LCD 2	337	100	100	171018	100
M2H	LC0831	WILLOWDALE LCD 2	655	100	100	171673	100
M2H	LC0832	WILLOWDALE LCD 2	325	100	100	171998	100
M2H	LC0833	WILLOWDALE LCD 2	35	100	100	172033	100
M2H	LC0834	WILLOWDALE LCD 2	478	100	100	172511	100
M2H	LC0835	WILLOWDALE LCD 2	502	100	100	173013	100
M2H	LC0836	WILLOWDALE LCD 2	110	100	100	173123	100
M2H	LC0837	WILLOWDALE LCD 2	274	100	100	173397	100
M2M	LC0801	WILLOWDALE LCD 2	410	100	100	173807	100
M2M	LC0802	WILLOWDALE LCD 2	144	100	100	173951	100
M2M	LC0803	WILLOWDALE LCD 2	89	100	100	174040	100
M2M	LC0804	WILLOWDALE LCD 2	204	100	100	174244	100
M2M	LC0805	WILLOWDALE LCD 2	326	100	100	174570	100
M2M	LC0806	WILLOWDALE LCD 2	268	100	100	174838	100
M2M	LC0807	WILLOWDALE LCD 2	264	100	100	175102	100
M2M	LC0808	WILLOWDALE LCD 2	267	100	100	175369	100
M2M	LC0809	WILLOWDALE LCD 2	312	100	100	175681	100
M2M	LC0810	WILLOWDALE LCD 2	324	100	100	176005	100

FSA	Delivery Mode (Route)	Depot	All Points Of Call	Value 1 (%)	Avg Value	Cumulative Points of Call	Cumulative Penetration
M2M	LC0811	WILLOWDALE LCD 2	190	100	100	176195	100
M2M	LC0812	WILLOWDALE LCD 2	256	100	100	176451	100
M2M	LC0813	WILLOWDALE LCD 2	348	100	100	176799	100
M2M	LC0814	WILLOWDALE LCD 2	191	100	100	176990	100
M2M	LC0815	WILLOWDALE LCD 2	0	100	100	176990	100
M2M	LC0816	WILLOWDALE LCD 2	324	100	100	177314	100
M2M	LC0817	WILLOWDALE LCD 2	280	100	100	177594	100
M2M	LC0818	WILLOWDALE LCD 2	315	100	100	177909	100
M2M	LC0819	WILLOWDALE LCD 2	103	100	100	178012	100
M2M	LC0821	WILLOWDALE LCD 2	231	100	100	178243	100
M2M	LC0823	WILLOWDALE LCD 2	146	100	100	178389	100
M2M	LC0826	WILLOWDALE LCD 2	257	100	100	178646	100
M2H	LB0001	NORTH YORK RPO DEXTER	42	100	100	178688	100
M2J	LB0001	NORTH YORK RPO LESLIE NYMARK	46	100	100	178734	100
M2J	LB0001	NORTH YORK RPO DON VALLEY	10	100	100	178744	100
M2K	LB0001	NORTH YORK RPO CUMMER	68	100	100	178812	100
M2K	LC0901	WILLOWDALE LCD B	250	100	100	179062	100
M2K	LC0902	WILLOWDALE LCD B	262	100	100	179324	100
M2K	LC0903	WILLOWDALE LCD B	171	100	100	179495	100
M2K	LC0904	WILLOWDALE LCD B	233	100	100	179728	100
M2K	LC0905	WILLOWDALE LCD B	77	100	100	179805	100
M2K	LC0906	WILLOWDALE LCD B	226	100	100	180031	100
M2K	LC0907	WILLOWDALE LCD B	135	100	100	180166	100
M2K	LC0908	WILLOWDALE LCD B	214	100	100	180380	100
M2K	LC0909	WILLOWDALE LCD B	123	100	100	180503	100
M2K	LC0910	WILLOWDALE LCD B	168	100	100	180671	100
M2K	LC0911	WILLOWDALE LCD B	10	100	100	180681	100
M2K	LC0912	WILLOWDALE LCD B	180	100	100	180861	100
M2K	LC0913	WILLOWDALE LCD B	191	100	100	181052	100
M2K	LC0914	WILLOWDALE LCD B	90	100	100	181142	100
M2K	LC0915	WILLOWDALE LCD B	202	100	100	181344	100
M2K	LC0916	WILLOWDALE LCD B	84	100	100	181428	100
M2K	LC0918	WILLOWDALE LCD B	9	100	100	181437	100
M2K	LB0001	NORTH YORK RPO BAYVIEW VILLAGE	124	100	100	181561	100
M2L	LB0001	NORTH YORK RPO YORK MILLS PLAZ	5	100	100	181566	100
M2M	LB0001	NORTH YORK RPO CENTERPOINT	139	100	100	181705	100
M2N	LB0001	NORTH YORK RPO YONGE AND FINCH	14	100	100	181719	100
M2N	LB0001	NORTH YORK RPO SHEPPARD CENTRE	134	100	100	181853	100
M2R	LB0001	NORTH YORK RPO THE CONCOURSE	204	100	100	182057	100
M2R	LC0500	WILLOWDALE STN D	341	100	100	182398	100
M2R	LC0501	WILLOWDALE STN D	317	100	100	182715	100
M2R	LC0502	WILLOWDALE STN D	259	100	100	182974	100
M2R	LC0503	WILLOWDALE STN D	264	100	100	183238	100
M2R	LC0504	WILLOWDALE STN D	347	100	100	183585	100
M2R	LC0505	WILLOWDALE STN D	150	100	100	183735	100

FSA	Delivery Mode (Route)	Depot	All Points Of Call	Value 1 (%)	Avg Value	Cumulative Points of Call	Cumulative Penetration
M2R	LC0506	WILLOWDALE STN D	247	100	100	183982	100
M2R	LC0507	WILLOWDALE STN D	218	100	100	184200	100
M2R	LC0508	WILLOWDALE STN D	303	100	100	184503	100
M2R	LC0509	WILLOWDALE STN D	268	100	100	184771	100
M2R	LC0510	WILLOWDALE STN D	404	100	100	185175	100
M2R	LC0511	WILLOWDALE STN D	207	100	100	185382	100
M2R	LC0512	WILLOWDALE STN D	384	100	100	185766	100
M2R	LC0513	WILLOWDALE STN D	205	100	100	185971	100
M2R	LC0515	WILLOWDALE STN D	215	100	100	186186	100
M2R	LC0517	WILLOWDALE STN D	252	100	100	186438	100
M2R	LC0519	WILLOWDALE STN D	181	100	100	186619	100
M2R	LC0521	WILLOWDALE STN D	397	100	100	187016	100
M2R	LC0523	WILLOWDALE STN D	113	100	100	187129	100
M3A	LB0001	NORTH YORK RPO PARKWOODS PLAZA	32	100	100	187161	100
M3B	LB0001	TORONTO RPO YK MILLS LESLIE	32	100	100	187193	100
M2L	LC0300	WILLOWDALE LCD L	211	100	100	187404	100
M2L	LC0301	WILLOWDALE LCD L	328	100	100	187732	100
M2L	LC0302	WILLOWDALE LCD L	279	100	100	188011	100
M2L	LC0303	WILLOWDALE LCD L	220	100	100	188231	100
M2L	LC0304	WILLOWDALE LCD L	285	100	100	188516	100
M2L	LC0305	WILLOWDALE LCD L	142	100	100	188658	100
M2L	LC0306	WILLOWDALE LCD L	168	100	100	188826	100
M2L	LC0307	WILLOWDALE LCD L	269	100	100	189095	100
M2L	LC0308	WILLOWDALE LCD L	227	100	100	189322	100
M2L	LC0309	WILLOWDALE LCD L	124	100	100	189446	100
M2L	LC0311	WILLOWDALE LCD L	153	100	100	189599	100
M2L	LC0317	WILLOWDALE LCD L	80	100	100	189679	100
M2P	LC0310	WILLOWDALE LCD L	258	100	100	189937	100
M2P	LC0312	WILLOWDALE LCD L	273	100	100	190210	100
M2P	LC0313	WILLOWDALE LCD L	102	100	100	190312	100
M2P	LC0314	WILLOWDALE LCD L	213	100	100	190525	100
M2P	LC0315	WILLOWDALE LCD L	0	100	100	190525	100
M2P	LC0316	WILLOWDALE LCD L	218	100	100	190743	100
M2P	LC0317	WILLOWDALE LCD L	75	100	100	190818	100
M2P	LC0318	WILLOWDALE LCD L	169	100	100	190987	100
M3C	LB0001	NORTH YORK RPO DON MILLS	14	100	100	191001	100
M3C	LB0001	NORTH YORK RPO FLEMINGDON	15	100	100	191016	100
M3A	LC0004	TORONTO LCD DON MILLS	177	100	100	191193	100
M3A	LC0005	TORONTO LCD DON MILLS	0	100	100	191193	100
M3A	LC0008	TORONTO LCD DON MILLS	193	100	100	191386	100
M3A	LC0010	TORONTO LCD DON MILLS	402	100	100	191788	100
M3A	LC0012	TORONTO LCD DON MILLS	402	100	100	192190	100
M3A	LC0014	TORONTO LCD DON MILLS	270	100	100	192460	100
M3A	LC0016	TORONTO LCD DON MILLS	233	100	100	192693	100
M3A	LC0017	TORONTO LCD DON MILLS	137	100	100	192830	100
M3A	LC0018	TORONTO LCD DON MILLS	85	100	100	192915	100
M3A	LC0020	TORONTO LCD DON MILLS	187	100	100	193102	100

FSA	Delivery Mode (Route)	Depot	All Points Of Call	Value 1 (%)	Avg Value	Cumulative Points of Call	Cumulative Penetration
M3A	LC0021	TORONTO LCD DON MILLS	374	100	100	193476	100
M3A	LC0023	TORONTO LCD DON MILLS	206	100	100	193682	100
M3A	LC0025	TORONTO LCD DON MILLS	220	100	100	193902	100
M3A	LC0026	TORONTO LCD DON MILLS	376	100	100	194278	100
M3A	LC0028	TORONTO LCD DON MILLS	348	100	100	194626	100
M3A	LC0029	TORONTO LCD DON MILLS	297	100	100	194923	100
M3A	LC0030	TORONTO LCD DON MILLS	361	100	100	195284	100
M3A	LC0031	TORONTO LCD DON MILLS	216	100	100	195500	100
M3A	LC0033	TORONTO LCD DON MILLS	366	100	100	195866	100
M3B	LC0001	TORONTO LCD DON MILLS	175	100	100	196041	100
M3B	LC0002	TORONTO LCD DON MILLS	132	100	100	196173	100
M3B	LC0006	TORONTO LCD DON MILLS	204	100	100	196377	100
M3B	LC0007	TORONTO LCD DON MILLS	219	100	100	196596	100
M3B	LC0009	TORONTO LCD DON MILLS	269	100	100	196865	100
M3B	LC0011	TORONTO LCD DON MILLS	290	100	100	197155	100
M3B	LC0013	TORONTO LCD DON MILLS	229	100	100	197384	100
M3B	LC0019	TORONTO LCD DON MILLS	197	100	100	197581	100
M3B	LC0022	TORONTO LCD DON MILLS	209	100	100	197790	100
M3B	LC0024	TORONTO LCD DON MILLS	237	100	100	198027	100
M3B	LC0027	TORONTO LCD DON MILLS	169	100	100	198196	100
M3B	LC0036	TORONTO LCD DON MILLS	0	100	100	198196	100
M3B	LC0037	TORONTO LCD DON MILLS	263	100	100	198459	100
M3B	LC0039	TORONTO LCD DON MILLS	134	100	100	198593	100
M3B	LC0040	TORONTO LCD DON MILLS	0	100	100	198593	100
M3B	LC0048	TORONTO LCD DON MILLS	25	100	100	198618	100
M3C	LC0015	TORONTO LCD DON MILLS	177	100	100	198795	100
M3C	LC0022	TORONTO LCD DON MILLS	3	100	100	198798	100
M3C	LC0032	TORONTO LCD DON MILLS	53	100	100	198851	100
M3C	LC0034	TORONTO LCD DON MILLS	0	100	100	198851	100
M3C	LC0035	TORONTO LCD DON MILLS	0	100	100	198851	100
M3C	LC0036	TORONTO LCD DON MILLS	232	100	100	199083	100
M3C	LC0037	TORONTO LCD DON MILLS	0	100	100	199083	100
M3C	LC0038	TORONTO LCD DON MILLS	167	100	100	199250	100
M3C	LC0039	TORONTO LCD DON MILLS	0	100	100	199250	100
M3C	LC0040	TORONTO LCD DON MILLS	167	100	100	199417	100
M3C	LC0041	TORONTO LCD DON MILLS	192	100	100	199609	100
M3C	LC0042	TORONTO LCD DON MILLS	409	100	100	200018	100
M3C	LC0043	TORONTO LCD DON MILLS	140	100	100	200158	100
M3C	LC0044	TORONTO LCD DON MILLS	0	100	100	200158	100
M3C	LC0045	TORONTO LCD DON MILLS	20	100	100	200178	100
M3C	LC0046	TORONTO LCD DON MILLS	0	100	100	200178	100
M3C	LC0047	TORONTO LCD DON MILLS	58	100	100	200236	100
M3C	LC0048	TORONTO LCD DON MILLS	2	100	100	200238	100
M3C	LC0049	TORONTO LCD DON MILLS	0	100	100	200238	100
M3C	LC0051	TORONTO LCD DON MILLS	295	100	100	200533	100
M3C	LC0053	TORONTO LCD DON MILLS	0	100	100	200533	100
M3C	LB0001	NORTH YORK STN DON MILLS	34	100	100	200567	100
M3H	LB0001	TORONTO RPO SHEPPARD PLAZA	2	100	100	200569	100
M3J	LB0001	NORTH YORK RPO DOWNSVIEW	82	100	100	200651	100

FSA	Delivery Mode (Route)	Depot	All Points Of Call	Value 1 (%)	Avg Value	Cumulative Points of Call	Cumulative Penetration
M3J	LB0001	NORTH YORK RPO KEELE SHEPPARD	42	100	100	200693	100
M3J	LB0001	NORTH YORK RPO STEELES WEST	13	100	100	200706	100
M3L	LB0001	NORTH YORK RPO JANE WILSON	122	100	100	200828	100
M3M	LB0001	TORONTO RPO KEELE WILSON	30	100	100	200858	100
M3H	LC0001	TORONTO LCD DOWNSVIEW A	266	100	100	201124	100
M3H	LC0002	TORONTO LCD DOWNSVIEW A	179	100	100	201303	100
M3H	LC0003	TORONTO LCD DOWNSVIEW A	296	100	100	201599	100
M3H	LC0004	TORONTO LCD DOWNSVIEW A	172	100	100	201771	100
M3H	LC0005	TORONTO LCD DOWNSVIEW A	165	100	100	201936	100
M3H	LC0006	TORONTO LCD DOWNSVIEW A	231	100	100	202167	100
M3H	LC0007	TORONTO LCD DOWNSVIEW A	35	100	100	202202	100
M3H	LC0008	TORONTO LCD DOWNSVIEW A	283	100	100	202485	100
M3H	LC0009	TORONTO LCD DOWNSVIEW A	260	100	100	202745	100
M3H	LC0010	TORONTO LCD DOWNSVIEW A	148	100	100	202893	100
M3H	LC0011	TORONTO LCD DOWNSVIEW A	292	100	100	203185	100
M3H	LC0012	TORONTO LCD DOWNSVIEW A	229	100	100	203414	100
M3H	LC0013	TORONTO LCD DOWNSVIEW A	312	100	100	203726	100
M3H	LC0014	TORONTO LCD DOWNSVIEW A	196	100	100	203922	100
M3H	LC0015	TORONTO LCD DOWNSVIEW A	158	100	100	204080	100
M3H	LC0016	TORONTO LCD DOWNSVIEW A	221	100	100	204301	100
M3H	LC0018	TORONTO LCD DOWNSVIEW A	180	100	100	204481	100
M3H	LC0019	TORONTO LCD DOWNSVIEW A	124	100	100	204605	100
M3H	LC0020	TORONTO LCD DOWNSVIEW A	252	100	100	204857	100
M3H	LC0021	TORONTO LCD DOWNSVIEW A	343	100	100	205200	100
M3H	LC0022	TORONTO LCD DOWNSVIEW A	406	100	100	205606	100
M3H	LC0023	TORONTO LCD DOWNSVIEW A	250	100	100	205856	100
M3H	LC0024	TORONTO LCD DOWNSVIEW A	312	100	100	206168	100
M3H	LC0025	TORONTO LCD DOWNSVIEW A	167	100	100	206335	100
M3H	LC0026	TORONTO LCD DOWNSVIEW A	202	100	100	206537	100
M3H	LC0027	TORONTO LCD DOWNSVIEW A	266	100	100	206803	100
M3H	LC0028	TORONTO LCD DOWNSVIEW A	186	100	100	206989	100
M3H	LC0029	TORONTO LCD DOWNSVIEW A	0	100	100	206989	100
M3K	LC0029	TORONTO LCD DOWNSVIEW A	91	100	100	207080	100
M3K	LC0030	TORONTO LCD DOWNSVIEW A	330	100	100	207410	100
M3K	LC0031	TORONTO LCD DOWNSVIEW A	269	100	100	207679	100
M3K	LC0032	TORONTO LCD DOWNSVIEW A	372	100	100	208051	100
M3K	LC0033	TORONTO LCD DOWNSVIEW A	192	100	100	208243	100
M3K	LC0034	TORONTO LCD DOWNSVIEW A	753	100	100	208996	100
M3K	LC0035	TORONTO LCD DOWNSVIEW A	0	100	100	208996	100
M3K	LC0036	TORONTO LCD DOWNSVIEW A	4	100	100	209000	100
M3K	LC0037	TORONTO LCD DOWNSVIEW A	44	100	100	209044	100
M3K	LC0042	TORONTO LCD DOWNSVIEW A	5	100	100	209049	100
M3K	LC0043	TORONTO LCD DOWNSVIEW A	17	100	100	209066	100
M3K	LC0044	TORONTO LCD DOWNSVIEW A	172	100	100	209238	100
M3L	LC0017	TORONTO LCD DOWNSVIEW A	543	100	100	209781	100
M3L	LC0037	TORONTO LCD DOWNSVIEW A	10	100	100	209791	100
M3L	LC0038	TORONTO LCD DOWNSVIEW A	590	100	100	210381	100

FSA	Delivery Mode (Route)	Depot	All Points Of Call	Value 1 (%)	Avg Value	Cumulative Points of Call	Cumulative Penetration
M3L	LC0039	TORONTO LCD DOWNSVIEW A	436	100	100	210817	100
M3L	LC0040	TORONTO LCD DOWNSVIEW A	438	100	100	211255	100
M3L	LC0041	TORONTO LCD DOWNSVIEW A	547	100	100	211802	100
M3L	LC0053	TORONTO LCD DOWNSVIEW A	0	100	100	211802	100
M3L	LC0054	TORONTO LCD DOWNSVIEW A	235	100	100	212037	100
M3L	LC0055	TORONTO LCD DOWNSVIEW A	486	100	100	212523	100
M3L	LC0056	TORONTO LCD DOWNSVIEW A	540	100	100	213063	100
M3L	LC0058	TORONTO LCD DOWNSVIEW A	67	100	100	213130	100
M3M	LC0034	TORONTO LCD DOWNSVIEW A	5	100	100	213135	100
M3M	LC0035	TORONTO LCD DOWNSVIEW A	33	100	100	213168	100
M3M	LC0036	TORONTO LCD DOWNSVIEW A	444	100	100	213612	100
M3M	LC0037	TORONTO LCD DOWNSVIEW A	108	100	100	213720	100
M3M	LC0042	TORONTO LCD DOWNSVIEW A	266	100	100	213986	100
M3M	LC0043	TORONTO LCD DOWNSVIEW A	206	100	100	214192	100
M3M	LC0044	TORONTO LCD DOWNSVIEW A	249	100	100	214441	100
M3M	LC0045	TORONTO LCD DOWNSVIEW A	205	100	100	214646	100
M3M	LC0046	TORONTO LCD DOWNSVIEW A	320	100	100	214966	100
M3M	LC0047	TORONTO LCD DOWNSVIEW A	333	100	100	215299	100
M3M	LC0048	TORONTO LCD DOWNSVIEW A	304	100	100	215603	100
M3M	LC0049	TORONTO LCD DOWNSVIEW A	346	100	100	215949	100
M3M	LC0050	TORONTO LCD DOWNSVIEW A	286	100	100	216235	100
M3M	LC0051	TORONTO LCD DOWNSVIEW A	343	100	100	216578	100
M3M	LC0052	TORONTO LCD DOWNSVIEW A	306	100	100	216884	100
M3M	LC0053	TORONTO LCD DOWNSVIEW A	53	100	100	216937	100
M3M	LC0055	TORONTO LCD DOWNSVIEW A	39	100	100	216976	100
M3M	LC0056	TORONTO LCD DOWNSVIEW A	0	100	100	216976	100
M2N	LC0001	WILLOWDALE LCD N	359	100	100	217335	100
M2N	LC0002	WILLOWDALE LCD N	152	100	100	217487	100
M2N	LC0003	WILLOWDALE LCD N	318	100	100	217805	100
M2N	LC0004	WILLOWDALE LCD N	161	100	100	217966	100
M2N	LC0005	WILLOWDALE LCD N	271	100	100	218237	100
M2N	LC0006	WILLOWDALE LCD N	352	100	100	218589	100
M2N	LC0007	WILLOWDALE LCD N	227	100	100	218816	100
M2N	LC0008	WILLOWDALE LCD N	301	100	100	219117	100
M2N	LC0009	WILLOWDALE LCD N	199	100	100	219316	100
M2N	LC0010	WILLOWDALE LCD N	152	100	100	219468	100
M2N	LC0011	WILLOWDALE LCD N	269	100	100	219737	100
M2N	LC0012	WILLOWDALE LCD N	175	100	100	219912	100
M2N	LC0013	WILLOWDALE LCD N	262	100	100	220174	100
M2N	LC0014	WILLOWDALE LCD N	98	100	100	220272	100
M2N	LC0015	WILLOWDALE LCD N	280	100	100	220552	100
M2N	LC0016	WILLOWDALE LCD N	83	100	100	220635	100
M2N	LC0017	WILLOWDALE LCD N	363	100	100	220998	100
M2N	LC0018	WILLOWDALE LCD N	190	100	100	221188	100
M2N	LC0019	WILLOWDALE LCD N	1	100	100	221189	100
M2N	LC0020	WILLOWDALE LCD N	56	100	100	221245	100
M2N	LC0021	WILLOWDALE LCD N	1	100	100	221246	100
M2N	LC0022	WILLOWDALE LCD N	207	100	100	221453	100
M2N	LC0023	WILLOWDALE LCD N	99	100	100	221552	100

FSA	Delivery Mode (Route)	Depot	All Points Of Call	Value 1 (%)	Avg Value	Cumulative Points of Call	Cumulative Penetration
M2N	LC0024	WILLOWDALE LCD N	283	100	100	221835	100
M2N	LC0025	WILLOWDALE LCD N	74	100	100	221909	100
M2N	LC0026	WILLOWDALE LCD N	47	100	100	221956	100
M2N	LC0027	WILLOWDALE LCD N	92	100	100	222048	100
M2N	LC0028	WILLOWDALE LCD N	54	100	100	222102	100
M2N	LC0029	WILLOWDALE LCD N	3	100	100	222105	100
M2N	LC0030	WILLOWDALE LCD N	183	100	100	222288	100
M2N	LC0031	WILLOWDALE LCD N	19	100	100	222307	100
M2N	LC0032	WILLOWDALE LCD N	189	100	100	222496	100
M2N	LC0033	WILLOWDALE LCD N	0	100	100	222496	100
M2N	LC0034	WILLOWDALE LCD N	126	100	100	222622	100
M2N	LC0035	WILLOWDALE LCD N	179	100	100	222801	100
M2N	LC0036	WILLOWDALE LCD N	183	100	100	222984	100
M2N	LC0037	WILLOWDALE LCD N	138	100	100	223122	100
M2N	LC0038	WILLOWDALE LCD N	188	100	100	223310	100
M2N	LC0039	WILLOWDALE LCD N	200	100	100	223510	100
M2N	LC0040	WILLOWDALE LCD N	156	100	100	223666	100
M2N	LC0041	WILLOWDALE LCD N	121	100	100	223787	100
M2N	LC0042	WILLOWDALE LCD N	244	100	100	224031	100
M2N	LC0043	WILLOWDALE LCD N	0	100	100	224031	100
M2N	LC0044	WILLOWDALE LCD N	150	100	100	224181	100
M2N	LC0045	WILLOWDALE LCD N	157	100	100	224338	100
M2N	LC0046	WILLOWDALE LCD N	119	100	100	224457	100
M2N	LC0047	WILLOWDALE LCD N	47	100	100	224504	100
M2N	LC0048	WILLOWDALE LCD N	144	100	100	224648	100
M2N	LC0049	WILLOWDALE LCD N	81	100	100	224729	100
M2N	LC0051	WILLOWDALE LCD N	142	100	100	224871	100
M2N	LC0053	WILLOWDALE LCD N	105	100	100	224976	100
M2N	LC0055	WILLOWDALE LCD N	344	100	100	225320	100
M3N	LB0001	NORTH YORK RPO JANE-FINCH MALL	145	100	100	225465	100
M3J	LC0101	TORONTO LCD DOWNSVIEW C	0	100	100	225465	100
M3J	LC0102	TORONTO LCD DOWNSVIEW C	0	100	100	225465	100
M3J	LC0103	TORONTO LCD DOWNSVIEW C	208	100	100	225673	100
M3J	LC0104	TORONTO LCD DOWNSVIEW C	347	100	100	226020	100
M3J	LC0105	TORONTO LCD DOWNSVIEW C	85	100	100	226105	100
M3J	LC0106	TORONTO LCD DOWNSVIEW C	351	100	100	226456	100
M3J	LC0107	TORONTO LCD DOWNSVIEW C	178	100	100	226634	100
M3J	LC0108	TORONTO LCD DOWNSVIEW C	419	100	100	227053	100
M3J	LC0109	TORONTO LCD DOWNSVIEW C	54	100	100	227107	100
M3J	LC0110	TORONTO LCD DOWNSVIEW C	374	100	100	227481	100
M3J	LC0111	TORONTO LCD DOWNSVIEW C	128	100	100	227609	100
M3J	LC0112	TORONTO LCD DOWNSVIEW C	343	100	100	227952	100
M3J	LC0113	TORONTO LCD DOWNSVIEW C	0	100	100	227952	100
M3J	LC0114	TORONTO LCD DOWNSVIEW C	156	100	100	228108	100
M3J	LC0115	TORONTO LCD DOWNSVIEW C	57	100	100	228165	100
M3J	LC0116	TORONTO LCD DOWNSVIEW C	220	100	100	228385	100
M3J	LC0117	TORONTO LCD DOWNSVIEW C	94	100	100	228479	100
M3J	LC0118	TORONTO LCD DOWNSVIEW C	358	100	100	228837	100
M3J	LC0119	TORONTO LCD DOWNSVIEW C	150	100	100	228987	100

FSA	Delivery Mode (Route)	Depot	All Points Of Call	Value 1 (%)	Avg Value	Cumulative Points of Call	Cumulative Penetration
M3J	LC0120	TORONTO LCD DOWNSVIEW C	0	100	100	228987	100
M3N	LC0118	TORONTO LCD DOWNSVIEW C	0	100	100	228987	100
M3N	LC0121	TORONTO LCD DOWNSVIEW C	346	100	100	229333	100
M3N	LC0122	TORONTO LCD DOWNSVIEW C	343	100	100	229676	100
M3N	LC0123	TORONTO LCD DOWNSVIEW C	251	100	100	229927	100
M3N	LC0124	TORONTO LCD DOWNSVIEW C	474	100	100	230401	100
M3N	LC0125	TORONTO LCD DOWNSVIEW C	251	100	100	230652	100
M3N	LC0126	TORONTO LCD DOWNSVIEW C	503	100	100	231155	100
M3N	LC0127	TORONTO LCD DOWNSVIEW C	294	100	100	231449	100
M3N	LC0128	TORONTO LCD DOWNSVIEW C	173	100	100	231622	100
M3N	LC0129	TORONTO LCD DOWNSVIEW C	332	100	100	231954	100
M3N	LC0130	TORONTO LCD DOWNSVIEW C	327	100	100	232281	100
M3N	LC0131	TORONTO LCD DOWNSVIEW C	187	100	100	232468	100
M3N	LC0132	TORONTO LCD DOWNSVIEW C	460	100	100	232928	100
M3N	LC0133	TORONTO LCD DOWNSVIEW C	334	100	100	233262	100
M3N	LC0134	TORONTO LCD DOWNSVIEW C	529	100	100	233791	100
M3N	LC0135	TORONTO LCD DOWNSVIEW C	255	100	100	234046	100
M3N	LC0136	TORONTO LCD DOWNSVIEW C	0	100	100	234046	100
M3N	LC0137	TORONTO LCD DOWNSVIEW C	391	100	100	234437	100
M4A	LB0001	NORTH YORK RPO VICTORIA TERR	0	100	100	234437	100
M4A	LC0107	NORTH YORK STN O	66	100	100	234503	100
M4A	LC0109	NORTH YORK STN O	320	100	100	234823	100
M4A	LC0111	NORTH YORK STN O	87	100	100	234910	100
M4A	LC0112	NORTH YORK STN O	388	100	100	235298	100
M4A	LC0113	NORTH YORK STN O	370	100	100	235668	100
M4A	LC0115	NORTH YORK STN O	295	100	100	235963	100
M4A	LC0116	NORTH YORK STN O	163	100	100	236126	100
M4A	LC0117	NORTH YORK STN O	129	100	100	236255	100
M4A	LC0118	NORTH YORK STN O	153	100	100	236408	100
M4B	LC0101	NORTH YORK STN O	187	100	100	236595	100
M4B	LC0102	NORTH YORK STN O	463	100	100	237058	100
M4B	LC0103	NORTH YORK STN O	227	100	100	237285	100
M4B	LC0104	NORTH YORK STN O	309	100	100	237594	100
M4B	LC0105	NORTH YORK STN O	147	100	100	237741	100
M4B	LC0106	NORTH YORK STN O	411	100	100	238152	100
M4B	LC0107	NORTH YORK STN O	267	100	100	238419	100
M4B	LC0108	NORTH YORK STN O	219	100	100	238638	100
M4B	LC0110	NORTH YORK STN O	389	100	100	239027	100
M4B	LC0111	NORTH YORK STN O	429	100	100	239456	100
M4B	LC0114	NORTH YORK STN O	402	100	100	239858	100
M4B	LB0001	TORONTO RPO O'CONNOR	39	100	100	239897	100
M4C	LB0001	TORONTO RPO COXWELL SHOPPER	12	100	100	239909	100
M4C	LC0501	TORONTO STN H	170	100	100	240079	100
M4C	LC0502	TORONTO STN H	258	100	100	240337	100
M4C	LC0503	TORONTO STN H	222	100	100	240559	100
M4C	LC0504	TORONTO STN H	236	100	100	240795	100
M4C	LC0505	TORONTO STN H	368	100	100	241163	100
M4C	LC0506	TORONTO STN H	249	100	100	241412	100

FSA	Delivery Mode (Route)	Depot	All Points Of Call	Value 1 (%)	Avg Value	Cumulative Points of Call	Cumulative Penetration
M4C	LC0507	TORONTO STN H	502	100	100	241914	100
M4C	LC0508	TORONTO STN H	339	100	100	242253	100
M4C	LC0509	TORONTO STN H	326	100	100	242579	100
M4C	LC0510	TORONTO STN H	350	100	100	242929	100
M4C	LC0511	TORONTO STN H	335	100	100	243264	100
M4C	LC0512	TORONTO STN H	511	100	100	243775	100
M4C	LC0513	TORONTO STN H	467	100	100	244242	100
M4C	LC0514	TORONTO STN H	519	100	100	244761	100
M4C	LC0515	TORONTO STN H	458	100	100	245219	100
M4C	LC0516	TORONTO STN H	415	100	100	245634	100
M4C	LC0517	TORONTO STN H	523	100	100	246157	100
M4C	LC0518	TORONTO STN H	480	100	100	246637	100
M4C	LC0519	TORONTO STN H	490	100	100	247127	100
M4C	LC0520	TORONTO STN H	416	100	100	247543	100
M4C	LC0521	TORONTO STN H	399	100	100	247942	100
M4C	LC0522	TORONTO STN H	235	100	100	248177	100
M4C	LC0523	TORONTO STN H	405	100	100	248582	100
M4E	LC0522	TORONTO STN H	151	100	100	248733	100
M4E	LC0524	TORONTO STN H	420	100	100	249153	100
M4E	LC0525	TORONTO STN H	528	100	100	249681	100
M4E	LC0526	TORONTO STN H	426	100	100	250107	100
M4E	LC0527	TORONTO STN H	530	100	100	250637	100
M4E	LC0528	TORONTO STN H	331	100	100	250968	100
M4E	LC0529	TORONTO STN H	193	100	100	251161	100
M4E	LC0530	TORONTO STN H	248	100	100	251409	100
M4E	LC0531	TORONTO STN H	290	100	100	251699	100
M4E	LC0532	TORONTO STN H	250	100	100	251949	100
M4E	LC0533	TORONTO STN H	291	100	100	252240	100
M4E	LC0534	TORONTO STN H	350	100	100	252590	100
M4E	LC0535	TORONTO STN H	346	100	100	252936	100
M4E	LC0536	TORONTO STN H	499	100	100	253435	100
M4E	LC0537	TORONTO STN H	389	100	100	253824	100
M4E	LC0538	TORONTO STN H	244	100	100	254068	100
M4E	LC0539	TORONTO STN H	258	100	100	254326	100
M4E	LC0540	TORONTO STN H	42	100	100	254368	100
M4C	LB0001	TORONTO RPO SHOPPERS WORLD	61	100	100	254429	100
M4C	LB0001	TORONTO RPO WOODBINE HTS	45	100	100	254474	100
M4E	LB0001	TORONTO RPO THE BEACHES	0	100	100	254474	100
M4G	LB0001	TORONTO RPO LEASIDE	34	100	100	254508	100
M4G	LB0001	TORONTO STN R	26	100	100	254534	100
M4G	LC0200	TORONTO STN R	251	100	100	254785	100
M4G	LC0201	TORONTO STN R	0	100	100	254785	100
M4G	LC0202	TORONTO STN R	109	100	100	254894	100
M4G	LC0204	TORONTO STN R	148	100	100	255042	100
M4G	LC0205	TORONTO STN R	196	100	100	255238	100
M4G	LC0206	TORONTO STN R	121	100	100	255359	100
M4G	LC0207	TORONTO STN R	383	100	100	255742	100
M4G	LC0208	TORONTO STN R	195	100	100	255937	100
M4G	LC0209	TORONTO STN R	66	100	100	256003	100

FSA	Delivery Mode (Route)	Depot	All Points Of Call	Value 1 (%)	Avg Value	Cumulative Points of Call	Cumulative Penetration
M4G	LC0210	TORONTO STN R	200	100	100	256203	100
M4G	LC0211	TORONTO STN R	42	100	100	256245	100
M4G	LC0212	TORONTO STN R	218	100	100	256463	100
M4G	LC0213	TORONTO STN R	119	100	100	256582	100
M4G	LC0214	TORONTO STN R	313	100	100	256895	100
M4G	LC0215	TORONTO STN R	156	100	100	257051	100
M4G	LC0216	TORONTO STN R	227	100	100	257278	100
M4G	LC0217	TORONTO STN R	96	100	100	257374	100
M4G	LC0218	TORONTO STN R	266	100	100	257640	100
M4G	LC0219	TORONTO STN R	148	100	100	257788	100
M4G	LC0220	TORONTO STN R	0	100	100	257788	100
M4G	LC0221	TORONTO STN R	184	100	100	257972	100
M4H	LC0200	TORONTO STN R	0	100	100	257972	100
M4H	LC0201	TORONTO STN R	77	100	100	258049	100
M4H	LC0202	TORONTO STN R	0	100	100	258049	100
M4H	LC0203	TORONTO STN R	0	100	100	258049	100
M4H	LC0204	TORONTO STN R	0	100	100	258049	100
M4H	LC0206	TORONTO STN R	0	100	100	258049	100
M4H	LC0208	TORONTO STN R	0	100	100	258049	100
M4H	LC0209	TORONTO STN R	0	100	100	258049	100
M4H	LC0210	TORONTO STN R	0	100	100	258049	100
M4H	LC0211	TORONTO STN R	0	100	100	258049	100
M4H	LC0212	TORONTO STN R	0	100	100	258049	100
M4H	LC0219	TORONTO STN R	0	100	100	258049	100
M4H	LB0001	TORONTO RPO THORNCLIFFE	110	100	100	258159	100
M4J	LB0001	TORONTO RPO DANFORTH	30	100	100	258189	100
M4J	LC0618	TORONTO STN J	395	100	100	258584	100
M4J	LC0620	TORONTO STN J	384	100	100	258968	100
M4J	LC0622	TORONTO STN J	391	100	100	259359	100
M4J	LC0624	TORONTO STN J	255	100	100	259614	100
M4J	LC0626	TORONTO STN J	287	100	100	259901	100
M4J	LC0628	TORONTO STN J	301	100	100	260202	100
M4J	LC0629	TORONTO STN J	291	100	100	260493	100
M4J	LC0630	TORONTO STN J	404	100	100	260897	100
M4J	LC0631	TORONTO STN J	358	100	100	261255	100
M4J	LC0632	TORONTO STN J	343	100	100	261598	100
M4J	LC0633	TORONTO STN J	482	100	100	262080	100
M4J	LC0634	TORONTO STN J	428	100	100	262508	100
M4J	LC0635	TORONTO STN J	397	100	100	262905	100
M4J	LC0636	TORONTO STN J	357	100	100	263262	100
M4J	LC0637	TORONTO STN J	366	100	100	263628	100
M4J	LC0638	TORONTO STN J	385	100	100	264013	100
M4J	LC0639	TORONTO STN J	424	100	100	264437	100
M4J	LC0640	TORONTO STN J	403	100	100	264840	100
M4J	LC0641	TORONTO STN J	469	100	100	265309	100
M4J	LC0642	TORONTO STN J	370	100	100	265679	100
M4J	LC0643	TORONTO STN J	377	100	100	266056	100
M4J	LC0644	TORONTO STN J	152	100	100	266208	100
M4J	LC0645	TORONTO STN J	426	100	100	266634	100

FSA	Delivery Mode (Route)	Depot	All Points Of Call	Value 1 (%)	Avg Value	Cumulative Points of Call	Cumulative Penetration
M4K	LC0601	TORONTO STN J	295	100	100	266929	100
M4K	LC0602	TORONTO STN J	353	100	100	267282	100
M4K	LC0603	TORONTO STN J	267	100	100	267549	100
M4K	LC0604	TORONTO STN J	176	100	100	267725	100
M4K	LC0605	TORONTO STN J	295	100	100	268020	100
M4K	LC0606	TORONTO STN J	269	100	100	268289	100
M4K	LC0607	TORONTO STN J	170	100	100	268459	100
M4K	LC0608	TORONTO STN J	202	100	100	268661	100
M4K	LC0609	TORONTO STN J	211	100	100	268872	100
M4K	LC0610	TORONTO STN J	327	100	100	269199	100
M4K	LC0611	TORONTO STN J	259	100	100	269458	100
M4K	LC0612	TORONTO STN J	141	100	100	269599	100
M4K	LC0613	TORONTO STN J	318	100	100	269917	100
M4K	LC0614	TORONTO STN J	186	100	100	270103	100
M4K	LC0615	TORONTO STN J	311	100	100	270414	100
M4K	LC0616	TORONTO STN J	209	100	100	270623	100
M4K	LC0617	TORONTO STN J	124	100	100	270747	100
M4K	LC0619	TORONTO STN J	160	100	100	270907	100
M4K	LC0621	TORONTO STN J	133	100	100	271040	100
M4K	LC0623	TORONTO STN J	200	100	100	271240	100
M4K	LC0625	TORONTO STN J	70	100	100	271310	100
M4K	LC0627	TORONTO STN J	69	100	100	271379	100
M4K	LB0001	TORONTO RPO CHESTER	32	100	100	271411	100
M4K	LB0001	TORONTO RPO ELLERBECK	24	100	100	271435	100
M4L	LC0401	TORONTO STN G	268	100	100	271703	100
M4L	LC0402	TORONTO STN G	238	100	100	271941	100
M4L	LC0403	TORONTO STN G	215	100	100	272156	100
M4L	LC0404	TORONTO STN G	325	100	100	272481	100
M4L	LC0405	TORONTO STN G	314	100	100	272795	100
M4L	LC0406	TORONTO STN G	340	100	100	273135	100
M4L	LC0407	TORONTO STN G	344	100	100	273479	100
M4L	LC0408	TORONTO STN G	401	100	100	273880	100
M4L	LC0409	TORONTO STN G	293	100	100	274173	100
M4L	LC0410	TORONTO STN G	273	100	100	274446	100
M4L	LC0411	TORONTO STN G	351	100	100	274797	100
M4L	LC0412	TORONTO STN G	333	100	100	275130	100
M4L	LC0413	TORONTO STN G	284	100	100	275414	100
M4L	LC0414	TORONTO STN G	345	100	100	275759	100
M4L	LC0415	TORONTO STN G	463	100	100	276222	100
M4L	LC0416	TORONTO STN G	311	100	100	276533	100
M4L	LC0417	TORONTO STN G	307	100	100	276840	100
M4L	LC0418	TORONTO STN G	346	100	100	277186	100
M4L	LC0419	TORONTO STN G	333	100	100	277519	100
M4L	LC0420	TORONTO STN G	344	100	100	277863	100
M4L	LC0421	TORONTO STN G	358	100	100	278221	100
M4L	LC0422	TORONTO STN G	236	100	100	278457	100
M4L	LC0441	TORONTO STN G	240	100	100	278697	100
M4M	LC0418	TORONTO STN G	1	100	100	278698	100
M4M	LC0419	TORONTO STN G	0	100	100	278698	100

FSA	Delivery Mode (Route)	Depot	All Points Of Call	Value 1 (%)	Avg Value	Cumulative Points of Call	Cumulative Penetration
M4M	LC0422	TORONTO STN G	0	100	100	278698	100
M4M	LC0423	TORONTO STN G	380	100	100	279078	100
M4M	LC0424	TORONTO STN G	387	100	100	279465	100
M4M	LC0425	TORONTO STN G	279	100	100	279744	100
M4M	LC0426	TORONTO STN G	367	100	100	280111	100
M4M	LC0427	TORONTO STN G	290	100	100	280401	100
M4M	LC0428	TORONTO STN G	349	100	100	280750	100
M4M	LC0429	TORONTO STN G	344	100	100	281094	100
M4M	LC0430	TORONTO STN G	423	100	100	281517	100
M4M	LC0431	TORONTO STN G	520	100	100	282037	100
M4M	LC0432	TORONTO STN G	178	100	100	282215	100
M4M	LC0433	TORONTO STN G	304	100	100	282519	100
M4M	LC0434	TORONTO STN G	243	100	100	282762	100
M4M	LC0435	TORONTO STN G	294	100	100	283056	100
M4M	LC0437	TORONTO STN G	241	100	100	283297	100
M4M	LC0439	TORONTO STN G	250	100	100	283547	100
M4M	LB0001	TORONTO RPO QUEEN CARLAW	52	100	100	283599	100
M4N	LB0001	TORONTO RPO BEDFORD	44	100	100	283643	100
M4P	LB0001	TORONTO RPO YONGE EGLINTON	37	100	100	283680	100
M4N	LC0001	TORONTO LCD K	142	100	100	283822	100
M4N	LC0002	TORONTO LCD K	354	100	100	284176	100
M4N	LC0003	TORONTO LCD K	104	100	100	284280	100
M4N	LC0005	TORONTO LCD K	280	100	100	284560	100
M4N	LC0007	TORONTO LCD K	217	100	100	284777	100
M4N	LC0009	TORONTO LCD K	173	100	100	284950	100
M4N	LC0010	TORONTO LCD K	222	100	100	285172	100
M4N	LC0011	TORONTO LCD K	270	100	100	285442	100
M4N	LC0013	TORONTO LCD K	228	100	100	285670	100
M4N	LC0015	TORONTO LCD K	219	100	100	285889	100
M4N	LC0016	TORONTO LCD K	323	100	100	286212	100
M4N	LC0017	TORONTO LCD K	255	100	100	286467	100
M4N	LC0041	TORONTO LCD K	58	100	100	286525	100
M4P	LC0008	TORONTO LCD K	335	100	100	286860	100
M4P	LC0018	TORONTO LCD K	258	100	100	287118	100
M4P	LC0019	TORONTO LCD K	15	100	100	287133	100
M4P	LC0020	TORONTO LCD K	44	100	100	287177	100
M4P	LC0022	TORONTO LCD K	8	100	100	287185	100
M4P	LC0023	TORONTO LCD K	279	100	100	287464	100
M4P	LC0025	TORONTO LCD K	0	100	100	287464	100
M4P	LC0026	TORONTO LCD K	129	100	100	287593	100
M4P	LC0027	TORONTO LCD K	0	100	100	287593	100
M4P	LC0029	TORONTO LCD K	3	100	100	287596	100
M4P	LC0030	TORONTO LCD K	206	100	100	287802	100
M4P	LC0031	TORONTO LCD K	0	100	100	287802	100
M4P	LC0033	TORONTO LCD K	12	100	100	287814	100
M4P	LC0034	TORONTO LCD K	0	100	100	287814	100
M4P	LC0035	TORONTO LCD K	1	100	100	287815	100
M4P	LC0036	TORONTO LCD K	0	100	100	287815	100

FSA	Delivery Mode (Route)	Depot	All Points Of Call	Value 1 (%)	Avg Value	Cumulative Points of Call	Cumulative Penetration
M4P	LC0037	TORONTO LCD K	0	100	100	287815	100
M4P	LC0043	TORONTO LCD K	0	100	100	287815	100
M4R	LC0004	TORONTO LCD K	281	100	100	288096	100
M4R	LC0014	TORONTO LCD K	245	100	100	288341	100
M4R	LC0019	TORONTO LCD K	81	100	100	288422	100
M4R	LC0021	TORONTO LCD K	70	100	100	288492	100
M4R	LC0022	TORONTO LCD K	168	100	100	288660	100
M4R	LC0025	TORONTO LCD K	192	100	100	288852	100
M4R	LC0029	TORONTO LCD K	148	100	100	289000	100
M4R	LC0031	TORONTO LCD K	252	100	100	289252	100
M4R	LC0032	TORONTO LCD K	79	100	100	289331	100
M4R	LC0039	TORONTO LCD K	214	100	100	289545	100
M4R	LC0043	TORONTO LCD K	0	100	100	289545	100
M4R	LC0045	TORONTO LCD K	168	100	100	289713	100
M4P	LB0001	TORONTO RPO BROADWAY	9	100	100	289722	100
M4S	LB0001	TORONTO RPO DAVISVILLE	30	100	100	289752	100
M4T	LB0001	TORONTO RPO ST CLAIR CENTRE	51	100	100	289803	100
M4S	LC0201	TORONTO LCD Q	257	100	100	290060	100
M4S	LC0202	TORONTO LCD Q	184	100	100	290244	100
M4S	LC0203	TORONTO LCD Q	206	100	100	290450	100
M4S	LC0204	TORONTO LCD Q	176	100	100	290626	100
M4S	LC0205	TORONTO LCD Q	248	100	100	290874	100
M4S	LC0207	TORONTO LCD Q	31	100	100	290905	100
M4S	LC0209	TORONTO LCD Q	0	100	100	290905	100
M4S	LC0211	TORONTO LCD Q	133	100	100	291038	100
M4S	LC0213	TORONTO LCD Q	147	100	100	291185	100
M4S	LC0220	TORONTO LCD Q	19	100	100	291204	100
M4S	LC0222	TORONTO LCD Q	195	100	100	291399	100
M4S	LC0224	TORONTO LCD Q	180	100	100	291579	100
M4S	LC0226	TORONTO LCD Q	254	100	100	291833	100
M4S	LC0228	TORONTO LCD Q	33	100	100	291866	100
M4S	LC0230	TORONTO LCD Q	72	100	100	291938	100
M4S	LC0232	TORONTO LCD Q	82	100	100	292020	100
M4S	LC0233	TORONTO LCD Q	204	100	100	292224	100
M4S	LC0234	TORONTO LCD Q	72	100	100	292296	100
M4S	LC0236	TORONTO LCD Q	62	100	100	292358	100
M4S	LC0238	TORONTO LCD Q	245	100	100	292603	100
M4S	LC0240	TORONTO LCD Q	0	100	100	292603	100
M4S	LC0242	TORONTO LCD Q	0	100	100	292603	100
M4T	LC0210	TORONTO LCD Q	98	100	100	292701	100
M4T	LC0225	TORONTO LCD Q	0	100	100	292701	100
M4T	LC0235	TORONTO LCD Q	224	100	100	292925	100
M4T	LC0237	TORONTO LCD Q	224	100	100	293149	100
M4T	LC0239	TORONTO LCD Q	273	100	100	293422	100
M4T	LC0241	TORONTO LCD Q	259	100	100	293681	100
M4T	LC0243	TORONTO LCD Q	187	100	100	293868	100
M4T	LC0245	TORONTO LCD Q	0	100	100	293868	100
M4T	LC0247	TORONTO LCD Q	0	100	100	293868	100
M4T	LC0249	TORONTO LCD Q	63	100	100	293931	100

FSA	Delivery Mode (Route)	Depot	All Points Of Call	Value 1 (%)	Avg Value	Cumulative Points of Call	Cumulative Penetration
M4T	LC0251	TORONTO LCD Q	49	100	100	293980	100
M4V	LC0206	TORONTO LCD Q	105	100	100	294085	100
M4V	LC0208	TORONTO LCD Q	2	100	100	294087	100
M4V	LC0212	TORONTO LCD Q	17	100	100	294104	100
M4V	LC0214	TORONTO LCD Q	116	100	100	294220	100
M4V	LC0215	TORONTO LCD Q	110	100	100	294330	100
M4V	LC0216	TORONTO LCD Q	49	100	100	294379	100
M4V	LC0217	TORONTO LCD Q	192	100	100	294571	100
M4V	LC0218	TORONTO LCD Q	4	100	100	294575	100
M4V	LC0219	TORONTO LCD Q	69	100	100	294644	100
M4V	LC0221	TORONTO LCD Q	30	100	100	294674	100
M4V	LC0223	TORONTO LCD Q	0	100	100	294674	100
M4V	LC0225	TORONTO LCD Q	0	100	100	294674	100
M4V	LC0227	TORONTO LCD Q	169	100	100	294843	100
M4V	LC0229	TORONTO LCD Q	177	100	100	295020	100
M4V	LC0231	TORONTO LCD Q	157	100	100	295177	100
M4V	LC0245	TORONTO LCD Q	153	100	100	295330	100
M4V	LC0247	TORONTO LCD Q	99	100	100	295429	100
M4V	LC0253	TORONTO LCD Q	183	100	100	295612	100
M4V	LC0255	TORONTO LCD Q	103	100	100	295715	100
M4T	LB0001	TORONTO PO Q	21	100	100	295736	100
M4T	LB0001	TORONTO RPO HEATH YONGE	10	100	100	295746	100
M4W	LB0001	TORONTO RPO HUDSON BAY CTR	65	100	100	295811	100
M4W	LB0001	TORONTO RPO MANULIFE	63	100	100	295874	100
M4W	LB0001	TORONTO RPO GREENWIN SQUARE	68	100	100	295942	100
M4W	LC0201	TORONTO LCD F	31	100	100	295973	100
M4W	LC0202	TORONTO LCD F	0	100	100	295973	100
M4W	LC0203	TORONTO LCD F	61	100	100	296034	100
M4W	LC0204	TORONTO LCD F	30	100	100	296064	100
M4W	LC0205	TORONTO LCD F	102	100	100	296166	100
M4W	LC0206	TORONTO LCD F	108	100	100	296274	100
M4W	LC0207	TORONTO LCD F	149	100	100	296423	100
M4W	LC0208	TORONTO LCD F	234	100	100	296657	100
M4W	LC0209	TORONTO LCD F	66	100	100	296723	100
M4W	LC0210	TORONTO LCD F	86	100	100	296809	100
M4W	LC0211	TORONTO LCD F	73	100	100	296882	100
M4W	LC0212	TORONTO LCD F	0	100	100	296882	100
M4W	LC0213	TORONTO LCD F	282	100	100	297164	100
M4W	LC0214	TORONTO LCD F	101	100	100	297265	100
M4W	LC0215	TORONTO LCD F	242	100	100	297507	100
M4W	LC0216	TORONTO LCD F	0	100	100	297507	100
M4Y	LC0101	TORONTO LCD CHARLES ST	0	100	100	297507	100
M4Y	LC0102	TORONTO LCD CHARLES ST	38	100	100	297545	100
M4Y	LC0103	TORONTO LCD CHARLES ST	25	100	100	297570	100
M4Y	LC0104	TORONTO LCD CHARLES ST	2	100	100	297572	100
M4Y	LC0105	TORONTO LCD CHARLES ST	17	100	100	297589	100
M4Y	LC0106	TORONTO LCD CHARLES ST	34	100	100	297623	100
M4Y	LC0107	TORONTO LCD CHARLES ST	16	100	100	297639	100

FSA	Delivery Mode (Route)	Depot	All Points Of Call	Value 1 (%)	Avg Value	Cumulative Points of Call	Cumulative Penetration
M4Y	LC0108	TORONTO LCD CHARLES ST	0	100	100	297639	100
M4Y	LC0109	TORONTO LCD CHARLES ST	53	100	100	297692	100
M4Y	LC0110	TORONTO LCD CHARLES ST	45	100	100	297737	100
M4Y	LC0111	TORONTO LCD CHARLES ST	0	100	100	297737	100
M4Y	LC0112	TORONTO LCD CHARLES ST	21	100	100	297758	100
M4Y	LC0113	TORONTO LCD CHARLES ST	0	100	100	297758	100
M4Y	LC0114	TORONTO LCD CHARLES ST	0	100	100	297758	100
M4Y	LC0115	TORONTO LCD CHARLES ST	48	100	100	297806	100
M4Y	LC0116	TORONTO LCD CHARLES ST	3	100	100	297809	100
M4Y	LC0117	TORONTO LCD CHARLES ST	81	100	100	297890	100
M4Y	LC0118	TORONTO LCD CHARLES ST	0	100	100	297890	100
M4Y	LB0001	TORONTO RPO WOOD STREET	36	100	100	297926	100
M4Y	LB0001	TORONTO PO F	42	100	100	297968	100
M4X	LC0001	TORONTO LCD ADELAIDE	26	100	100	297994	100
M4X	LC0002	TORONTO LCD ADELAIDE	81	100	100	298075	100
M4X	LC0003	TORONTO LCD ADELAIDE	101	100	100	298176	100
M4X	LC0004	TORONTO LCD ADELAIDE	112	100	100	298288	100
M4X	LC0006	TORONTO LCD ADELAIDE	39	100	100	298327	100
M4X	LC0008	TORONTO LCD ADELAIDE	35	100	100	298362	100
M4X	LC0009	TORONTO LCD ADELAIDE	10	100	100	298372	100
M4X	LC0010	TORONTO LCD ADELAIDE	131	100	100	298503	100
M4X	LC0012	TORONTO LCD ADELAIDE	163	100	100	298666	100
M4X	LC0013	TORONTO LCD ADELAIDE	14	100	100	298680	100
M4X	LC0014	TORONTO LCD ADELAIDE	2	100	100	298682	100
M5A	LC0005	TORONTO LCD ADELAIDE	225	100	100	298907	100
M5A	LC0007	TORONTO LCD ADELAIDE	380	100	100	299287	100
M5A	LC0009	TORONTO LCD ADELAIDE	110	100	100	299397	100
M5A	LC0011	TORONTO LCD ADELAIDE	150	100	100	299547	100
M5A	LC0013	TORONTO LCD ADELAIDE	51	100	100	299598	100
M5A	LC0014	TORONTO LCD ADELAIDE	19	100	100	299617	100
M5A	LC0015	TORONTO LCD ADELAIDE	100	100	100	299717	100
M5A	LC0016	TORONTO LCD ADELAIDE	60	100	100	299777	100
M5A	LC0017	TORONTO LCD ADELAIDE	30	100	100	299807	100
M5A	LC0018	TORONTO LCD ADELAIDE	21	100	100	299828	100
M5A	LC0019	TORONTO LCD ADELAIDE	0	100	100	299828	100
M5A	LC0020	TORONTO LCD ADELAIDE	162	100	100	299990	100
M5A	LC0021	TORONTO LCD ADELAIDE	12	100	100	300002	100
M5A	LC0022	TORONTO LCD ADELAIDE	221	100	100	300223	100
M5A	LC0023	TORONTO LCD ADELAIDE	98	100	100	300321	100
M5A	LC0024	TORONTO LCD ADELAIDE	166	100	100	300487	100
M5A	LC0025	TORONTO LCD ADELAIDE	41	100	100	300528	100
M5A	LC0026	TORONTO LCD ADELAIDE	58	100	100	300586	100
M5A	LC0027	TORONTO LCD ADELAIDE	31	100	100	300617	100
M5A	LC0028	TORONTO LCD ADELAIDE	84	100	100	300701	100
M5A	LC0029	TORONTO LCD ADELAIDE	255	100	100	300956	100
M5A	LC0030	TORONTO LCD ADELAIDE	18	100	100	300974	100
M5A	LC0031	TORONTO LCD ADELAIDE	0	100	100	300974	100
M5A	LC0032	TORONTO LCD ADELAIDE	0	100	100	300974	100
M5A	LC0033	TORONTO LCD ADELAIDE	9	100	100	300983	100

FSA	Delivery Mode (Route)	Depot	All Points Of Call	Value 1 (%)	Avg Value	Cumulative Points of Call	Cumulative Penetration
M5A	LC0034	TORONTO LCD ADELAIDE	138	100	100	301121	100
M5A	LC0036	TORONTO LCD ADELAIDE	91	100	100	301212	100
M5A	LB0001	TORONTO RPO CORKTOWN	41	100	100	301253	100
M5A	LB0001	TORONTO RPO CABBAGETOWN	26	100	100	301279	100
M5B	LB0001	TORONTO RPO DUNDAS SQUARE	10	100	100	301289	100
M5B	LB0001	TORONTO RPO SHOPPER'S DRUG	20	100	100	301309	100
M5B	LC0205	TORONTO LCD 2	0	100	100	301309	100
M5B	LC0215	TORONTO LCD 2	0	100	100	301309	100
M5B	LC0217	TORONTO LCD 2	0	100	100	301309	100
M5B	LC0219	TORONTO LCD 2	0	100	100	301309	100
M5B	LC0221	TORONTO LCD 2	100	100	100	301409	100
M5B	LC0223	TORONTO LCD 2	69	100	100	301478	100
M5B	LC0225	TORONTO LCD 2	40	100	100	301518	100
M5B	LC0227	TORONTO LCD 2	3	100	100	301521	100
M5B	LC0229	TORONTO LCD 2	0	100	100	301521	100
M5B	LC0231	TORONTO LCD 2	0	100	100	301521	100
M5B	LC0233	TORONTO LCD 2	0	100	100	301521	100
M5B	LC0253	TORONTO LCD 2	0	100	100	301521	100
M5C	LC0207	TORONTO LCD 2	0	100	100	301521	100
M5C	LC0229	TORONTO LCD 2	0	100	100	301521	100
M5C	LC0231	TORONTO LCD 2	0	100	100	301521	100
M5C	LC0233	TORONTO LCD 2	1	100	100	301522	100
M5C	LC0235	TORONTO LCD 2	0	100	100	301522	100
M5C	LC0237	TORONTO LCD 2	0	100	100	301522	100
M5C	LC0239	TORONTO LCD 2	0	100	100	301522	100
M5C	LC0241	TORONTO LCD 2	0	100	100	301522	100
M5E	LC0209	TORONTO LCD 2	0	100	100	301522	100
M5E	LC0239	TORONTO LCD 2	0	100	100	301522	100
M5E	LC0241	TORONTO LCD 2	0	100	100	301522	100
M5E	LC0243	TORONTO LCD 2	0	100	100	301522	100
M5E	LC0245	TORONTO LCD 2	0	100	100	301522	100
M5E	LC0247	TORONTO LCD 2	0	100	100	301522	100
M5E	LC0249	TORONTO LCD 2	0	100	100	301522	100
M5E	LC0251	TORONTO LCD 2	8	100	100	301530	100
M5G	LC0201	TORONTO LCD 2	0	100	100	301530	100
M5G	LC0203	TORONTO LCD 2	0	100	100	301530	100
M5G	LC0211	TORONTO LCD 2	6	100	100	301536	100
M5G	LC0213	TORONTO LCD 2	0	100	100	301536	100
M5G	LC0215	TORONTO LCD 2	0	100	100	301536	100
M5G	LC0217	TORONTO LCD 2	2	100	100	301538	100
M5G	LC0221	TORONTO LCD 2	6	100	100	301544	100
M5G	LC0233	TORONTO LCD 2	0	100	100	301544	100
M5G	LC0253	TORONTO LCD 2	0	100	100	301544	100
M5C	LB0001	TORONTO PO ADELAIDE	31	100	100	301575	100
M5E	LB0001	TORONTO RPO YONGE-KING	30	100	100	301605	100
M5E	LB0001	TORONTO RPO MARKET	1	100	100	301606	100
M5H	LB0001	TORONTO RPO BAY ADELAIDE	3	100	100	301609	100
M5H	LC0103	TORONTO LCD 1	0	100	100	301609	100

FSA	Delivery Mode (Route)	Depot	All Points Of Call	Value 1 (%)	Avg Value	Cumulative Points of Call	Cumulative Penetration
M5H	LC0107	TORONTO LCD 1	0	100	100	301609	100
M5H	LC0109	TORONTO LCD 1	0	100	100	301609	100
M5H	LC0111	TORONTO LCD 1	0	100	100	301609	100
M5H	LC0115	TORONTO LCD 1	0	100	100	301609	100
M5H	LC0129	TORONTO LCD 1	0	100	100	301609	100
M5J	LC0101	TORONTO LCD 1	109	100	100	301718	100
M5J	LC0115	TORONTO LCD 1	0	100	100	301718	100
M5J	LC0119	TORONTO LCD 1	0	100	100	301718	100
M5J	LC0121	TORONTO LCD 1	0	100	100	301718	100
M5J	LC0123	TORONTO LCD 1	0	100	100	301718	100
M5J	LC0125	TORONTO LCD 1	0	100	100	301718	100
M5J	LC0127	TORONTO LCD 1	0	100	100	301718	100
M5J	LC0129	TORONTO LCD 1	0	100	100	301718	100
M5J	LC0131	TORONTO LCD 1	0	100	100	301718	100
M5J	LC0133	TORONTO LCD 1	0	100	100	301718	100
M5J	LC0135	TORONTO LCD 1	0	100	100	301718	100
M5J	LC0137	TORONTO LCD 1	0	100	100	301718	100
M5J	LB0001	TORONTO RPO ROYL BANK PLAZA	21	100	100	301739	100
M5K	LB0001	TORONTO STN TORONTO DOM	25	100	100	301764	100
M5M	LB0001	TORONTO RPO AVENUE LAWRENCE	0	100	100	301764	100
M5M	LC0401	TORONTO STN S	96	100	100	301860	100
M5M	LC0402	TORONTO STN S	260	100	100	302120	100
M5M	LC0403	TORONTO STN S	61	100	100	302181	100
M5M	LC0404	TORONTO STN S	196	100	100	302377	100
M5M	LC0405	TORONTO STN S	331	100	100	302708	100
M5M	LC0406	TORONTO STN S	244	100	100	302952	100
M5M	LC0407	TORONTO STN S	257	100	100	303209	100
M5M	LC0408	TORONTO STN S	304	100	100	303513	100
M5M	LC0409	TORONTO STN S	322	100	100	303835	100
M5M	LC0410	TORONTO STN S	343	100	100	304178	100
M5M	LC0411	TORONTO STN S	277	100	100	304455	100
M5M	LC0412	TORONTO STN S	362	100	100	304817	100
M5M	LC0413	TORONTO STN S	287	100	100	305104	100
M5M	LC0414	TORONTO STN S	328	100	100	305432	100
M5M	LC0415	TORONTO STN S	298	100	100	305730	100
M5M	LC0416	TORONTO STN S	117	100	100	305847	100
M5M	LC0417	TORONTO STN S	393	100	100	306240	100
M5M	LC0418	TORONTO STN S	350	100	100	306590	100
M5M	LC0419	TORONTO STN S	113	100	100	306703	100
M5M	LC0420	TORONTO STN S	288	100	100	306991	100
M5M	LC0421	TORONTO STN S	68	100	100	307059	100
M5N	LC0421	TORONTO STN S	153	100	100	307212	100
M5N	LC0422	TORONTO STN S	253	100	100	307465	100
M5N	LC0423	TORONTO STN S	156	100	100	307621	100
M5N	LC0424	TORONTO STN S	216	100	100	307837	100
M5N	LC0425	TORONTO STN S	283	100	100	308120	100
M5N	LC0426	TORONTO STN S	267	100	100	308387	100
M5N	LC0427	TORONTO STN S	319	100	100	308706	100

FSA	Delivery Mode (Route)	Depot	All Points Of Call	Value 1 (%)	Avg Value	Cumulative Points of Call	Cumulative Penetration
M5N	LC0428	TORONTO STN S	234	100	100	308940	100
M5N	LC0429	TORONTO STN S	230	100	100	309170	100
M5N	LC0430	TORONTO STN S	216	100	100	309386	100
M5N	LC0431	TORONTO STN S	0	100	100	309386	100
M5N	LC0432	TORONTO STN S	202	100	100	309588	100
M5N	LC0433	TORONTO STN S	13	100	100	309601	100
M5N	LC0434	TORONTO STN S	5	100	100	309606	100
M5P	LC0435	TORONTO STN S	21	100	100	309627	100
M5P	LC0436	TORONTO STN S	0	100	100	309627	100
M5P	LC0437	TORONTO STN S	106	100	100	309733	100
M5P	LC0438	TORONTO STN S	57	100	100	309790	100
M5P	LC0439	TORONTO STN S	196	100	100	309986	100
M5P	LC0440	TORONTO STN S	245	100	100	310231	100
M5P	LC0441	TORONTO STN S	191	100	100	310422	100
M5P	LC0442	TORONTO STN S	156	100	100	310578	100
M5P	LC0443	TORONTO STN S	68	100	100	310646	100
M5P	LC0444	TORONTO STN S	187	100	100	310833	100
M5P	LC0445	TORONTO STN S	277	100	100	311110	100
M5P	LC0446	TORONTO STN S	225	100	100	311335	100
M5P	LC0447	TORONTO STN S	264	100	100	311599	100
M5P	LC0448	TORONTO STN S	258	100	100	311857	100
M5P	LC0449	TORONTO STN S	85	100	100	311942	100
M5P	LC0451	TORONTO STN S	121	100	100	312063	100
M5N	LB0001	TORONTO RPO CASTLEWOOD	127	100	100	312190	100
M5R	LB0001	TORONTO RPO DUPONT	1	100	100	312191	100
M5R	LB0001	TORONTO RPO AVENUE ROAD	13	100	100	312204	100
M5S	LB0001	TORONTO PO P	60	100	100	312264	100
M5S	LB0001	TORONTO RPO THE COLONADE	24	100	100	312288	100
M5S	LB0001	TORONTO RPO WALMER	34	100	100	312322	100
M5R	LC0710	TORONTO LCD P	132	100	100	312454	100
M5R	LC0712	TORONTO LCD P	76	100	100	312530	100
M5R	LC0714	TORONTO LCD P	165	100	100	312695	100
M5R	LC0716	TORONTO LCD P	142	100	100	312837	100
M5R	LC0717	TORONTO LCD P	0	100	100	312837	100
M5R	LC0718	TORONTO LCD P	198	100	100	313035	100
M5R	LC0719	TORONTO LCD P	0	100	100	313035	100
M5R	LC0720	TORONTO LCD P	33	100	100	313068	100
M5R	LC0722	TORONTO LCD P	10	100	100	313078	100
M5R	LC0724	TORONTO LCD P	36	100	100	313114	100
M5R	LC0725	TORONTO LCD P	4	100	100	313118	100
M5R	LC0726	TORONTO LCD P	95	100	100	313213	100
M5R	LC0727	TORONTO LCD P	12	100	100	313225	100
M5R	LC0728	TORONTO LCD P	31	100	100	313256	100
M5R	LC0729	TORONTO LCD P	0	100	100	313256	100
M5R	LC0730	TORONTO LCD P	122	100	100	313378	100
M5R	LC0731	TORONTO LCD P	33	100	100	313411	100
M5R	LC0732	TORONTO LCD P	116	100	100	313527	100
M5R	LC0733	TORONTO LCD P	35	100	100	313562	100
M5R	LC0734	TORONTO LCD P	164	100	100	313726	100

FSA	Delivery Mode (Route)	Depot	All Points Of Call	Value 1 (%)	Avg Value	Cumulative Points of Call	Cumulative Penetration
M5R	LC0735	TORONTO LCD P	71	100	100	313797	100
M5R	LC0736	TORONTO LCD P	119	100	100	313916	100
M5R	LC0737	TORONTO LCD P	96	100	100	314012	100
M5R	LC0738	TORONTO LCD P	92	100	100	314104	100
M5R	LC0739	TORONTO LCD P	1	100	100	314105	100
M5R	LC0740	TORONTO LCD P	37	100	100	314142	100
M5R	LC0741	TORONTO LCD P	264	100	100	314406	100
M5S	LC0701	TORONTO LCD P	0	100	100	314406	100
M5S	LC0702	TORONTO LCD P	275	100	100	314681	100
M5S	LC0703	TORONTO LCD P	12	100	100	314693	100
M5S	LC0704	TORONTO LCD P	228	100	100	314921	100
M5S	LC0705	TORONTO LCD P	1	100	100	314922	100
M5S	LC0706	TORONTO LCD P	154	100	100	315076	100
M5S	LC0707	TORONTO LCD P	197	100	100	315273	100
M5S	LC0708	TORONTO LCD P	63	100	100	315336	100
M5S	LC0709	TORONTO LCD P	0	100	100	315336	100
M5S	LC0711	TORONTO LCD P	0	100	100	315336	100
M5S	LC0713	TORONTO LCD P	5	100	100	315341	100
M5S	LC0715	TORONTO LCD P	2	100	100	315343	100
M5S	LC0717	TORONTO LCD P	0	100	100	315343	100
M5S	LC0721	TORONTO LCD P	0	100	100	315343	100
M5S	LC0723	TORONTO LCD P	25	100	100	315368	100
M5S	LC0727	TORONTO LCD P	19	100	100	315387	100
M5S	MR0099	TORONTO LCD P	0	100	100	315387	100
M5T	LB0001	TORONTO RPO COLLEGE SPADINA	15	100	100	315402	100
M5T	LC0301	TORONTO LCD B	194	100	100	315596	100
M5T	LC0302	TORONTO LCD B	292	100	100	315888	100
M5T	LC0303	TORONTO LCD B	322	100	100	316210	100
M5T	LC0304	TORONTO LCD B	50	100	100	316260	100
M5T	LC0305	TORONTO LCD B	207	100	100	316467	100
M5T	LC0306	TORONTO LCD B	0	100	100	316467	100
M5T	LC0307	TORONTO LCD B	0	100	100	316467	100
M5T	LC0309	TORONTO LCD B	231	100	100	316698	100
M5T	LC0313	TORONTO LCD B	250	100	100	316948	100
M5T	LC0315	TORONTO LCD B	75	100	100	317023	100
M5T	LC0317	TORONTO LCD B	442	100	100	317465	100
M5T	LC0319	TORONTO LCD B	23	100	100	317488	100
M5T	LC0337	TORONTO LCD B	0	100	100	317488	100
M5V	LC0304	TORONTO LCD B	0	100	100	317488	100
M5V	LC0306	TORONTO LCD B	20	100	100	317508	100
M5V	LC0308	TORONTO LCD B	0	100	100	317508	100
M5V	LC0310	TORONTO LCD B	7	100	100	317515	100
M5V	LC0311	TORONTO LCD B	0	100	100	317515	100
M5V	LC0312	TORONTO LCD B	41	100	100	317556	100
M5V	LC0314	TORONTO LCD B	0	100	100	317556	100
M5V	LC0316	TORONTO LCD B	0	100	100	317556	100
M5V	LC0317	TORONTO LCD B	0	100	100	317556	100
M5V	LC0318	TORONTO LCD B	4	100	100	317560	100
M5V	LC0319	TORONTO LCD B	2	100	100	317562	100

FSA	Delivery Mode (Route)	Depot	All Points Of Call	Value 1 (%)	Avg Value	Cumulative Points of Call	Cumulative Penetration
M5V	LC0320	TORONTO LCD B	0	100	100	317562	100
M5V	LC0321	TORONTO LCD B	0	100	100	317562	100
M5V	LC0322	TORONTO LCD B	10	100	100	317572	100
M5V	LC0323	TORONTO LCD B	1	100	100	317573	100
M5V	LC0324	TORONTO LCD B	0	100	100	317573	100
M5V	LC0325	TORONTO LCD B	75	100	100	317648	100
M5V	LC0326	TORONTO LCD B	0	100	100	317648	100
M5V	LC0327	TORONTO LCD B	0	100	100	317648	100
M5V	LC0328	TORONTO LCD B	24	100	100	317672	100
M5V	LC0329	TORONTO LCD B	8	100	100	317680	100
M5V	LC0330	TORONTO LCD B	0	100	100	317680	100
M5V	LC0331	TORONTO LCD B	218	100	100	317898	100
M5V	LC0332	TORONTO LCD B	0	100	100	317898	100
M5V	LC0333	TORONTO LCD B	0	100	100	317898	100
M5V	LC0335	TORONTO LCD B	1	100	100	317899	100
M5V	LC0336	TORONTO LCD B	72	100	100	317971	100
M5V	LC0337	TORONTO LCD B	0	100	100	317971	100
M5V	LC0338	TORONTO LCD B	44	100	100	318015	100
M5V	LC0339	TORONTO LCD B	0	100	100	318015	100
M5V	LC0340	TORONTO LCD B	11	100	100	318026	100
M5V	LC0341	TORONTO LCD B	0	100	100	318026	100
M5V	LC0342	TORONTO LCD B	0	100	100	318026	100
M5V	LC0343	TORONTO LCD B	31	100	100	318057	100
M5V	LC0345	TORONTO LCD B	0	100	100	318057	100
M5V	LC0347	TORONTO LCD B	0	100	100	318057	100
M5T	LB0001	TORONTO RPO U.O.T	0	100	100	318057	100
M5T	LB0001	TORONTO RPO DUNDAS SPADINA	86	100	100	318143	100
M5T	GD0001	TORONTO PO B	0	100	100	318143	100
M5T	LB0001	TORONTO PO B	0	100	100	318143	100
M5W	GD0001	TORONTO STN A	59	100	100	318202	100
M5W	LB0001	TORONTO STN A	535	100	100	318737	100
M6A	LB0001	TORONTO RPO LAWRENCE PLAZA	26	100	100	318763	100
M6A	LB0001	NORTH YORK RPO DUFFERIN	71	100	100	318834	100
M6A	LB0001	NORTH YORK RPO YORKDALE MALL	27	100	100	318861	100
M6B	LB0001	NORTH YORK RPO MARLEE	10	100	100	318871	100
M6A	LC0101	TORONTO STN T	8	100	100	318879	100
M6A	LC0102	TORONTO STN T	53	100	100	318932	100
M6A	LC0103	TORONTO STN T	350	100	100	319282	100
M6A	LC0104	TORONTO STN T	135	100	100	319417	100
M6A	LC0105	TORONTO STN T	370	100	100	319787	100
M6A	LC0106	TORONTO STN T	30	100	100	319817	100
M6A	LC0107	TORONTO STN T	152	100	100	319969	100
M6A	LC0109	TORONTO STN T	2	100	100	319971	100
M6A	LC0111	TORONTO STN T	326	100	100	320297	100
M6A	LC0113	TORONTO STN T	265	100	100	320562	100
M6A	LC0115	TORONTO STN T	479	100	100	321041	100
M6A	LC0121	TORONTO STN T	183	100	100	321224	100

FSA	Delivery Mode (Route)	Depot	All Points Of Call	Value 1 (%)	Avg Value	Cumulative Points of Call	Cumulative Penetration
M6A	LC0123	TORONTO STN T	23	100	100	321247	100
M6A	LC0124	TORONTO STN T	37	100	100	321284	100
M6A	LC0125	TORONTO STN T	30	100	100	321314	100
M6A	LC0126	TORONTO STN T	0	100	100	321314	100
M6A	LC0127	TORONTO STN T	4	100	100	321318	100
M6A	LC0129	TORONTO STN T	3	100	100	321321	100
M6A	LC0130	TORONTO STN T	0	100	100	321321	100
M6A	LC0133	TORONTO STN T	0	100	100	321321	100
M6B	LC0106	TORONTO STN T	198	100	100	321519	100
M6B	LC0108	TORONTO STN T	200	100	100	321719	100
M6B	LC0109	TORONTO STN T	112	100	100	321831	100
M6B	LC0110	TORONTO STN T	303	100	100	322134	100
M6B	LC0112	TORONTO STN T	208	100	100	322342	100
M6B	LC0114	TORONTO STN T	220	100	100	322562	100
M6B	LC0116	TORONTO STN T	50	100	100	322612	100
M6B	LC0117	TORONTO STN T	170	100	100	322782	100
M6B	LC0118	TORONTO STN T	310	100	100	323092	100
M6B	LC0119	TORONTO STN T	254	100	100	323346	100
M6B	LC0120	TORONTO STN T	121	100	100	323467	100
M6B	LC0122	TORONTO STN T	423	100	100	323890	100
M6B	LC0124	TORONTO STN T	213	100	100	324103	100
M6B	LC0125	TORONTO STN T	31	100	100	324134	100
M6B	LC0126	TORONTO STN T	167	100	100	324301	100
M6B	LC0127	TORONTO STN T	190	100	100	324491	100
M6B	LC0128	TORONTO STN T	418	100	100	324909	100
M6B	LC0129	TORONTO STN T	307	100	100	325216	100
M6B	LC0131	TORONTO STN T	3	100	100	325219	100
M6B	LC0132	TORONTO STN T	75	100	100	325294	100
M6B	LC0133	TORONTO STN T	193	100	100	325487	100
M5N	LB0001	TORONTO RPO NORTOWN	1	100	100	325488	100
M6E	LB0001	TORONTO RPO WEST SIDE	25	100	100	325513	100
M6C	LC0601	TORONTO STN L	277	100	100	325790	100
M6C	LC0602	TORONTO STN L	210	100	100	326000	100
M6C	LC0603	TORONTO STN L	274	100	100	326274	100
M6C	LC0604	TORONTO STN L	225	100	100	326499	100
M6C	LC0605	TORONTO STN L	301	100	100	326800	100
M6C	LC0606	TORONTO STN L	459	100	100	327259	100
M6C	LC0607	TORONTO STN L	267	100	100	327526	100
M6C	LC0608	TORONTO STN L	368	100	100	327894	100
M6C	LC0609	TORONTO STN L	56	100	100	327950	100
M6C	LC0610	TORONTO STN L	411	100	100	328361	100
M6C	LC0611	TORONTO STN L	198	100	100	328559	100
M6C	LC0612	TORONTO STN L	395	100	100	328954	100
M6C	LC0613	TORONTO STN L	435	100	100	329389	100
M6C	LC0614	TORONTO STN L	481	100	100	329870	100
M6C	LC0615	TORONTO STN L	179	100	100	330049	100
M6C	LC0617	TORONTO STN L	207	100	100	330256	100
M6C	LC0654	TORONTO STN L	0	100	100	330256	100
M6C	LC0656	TORONTO STN L	0	100	100	330256	100

FSA	Delivery Mode (Route)	Depot	All Points Of Call	Value 1 (%)	Avg Value	Cumulative Points of Call	Cumulative Penetration
M6E	LC0616	TORONTO STN L	461	100	100	330717	100
M6E	LC0617	TORONTO STN L	118	100	100	330835	100
M6E	LC0618	TORONTO STN L	479	100	100	331314	100
M6E	LC0619	TORONTO STN L	298	100	100	331612	100
M6E	LC0620	TORONTO STN L	453	100	100	332065	100
M6E	LC0621	TORONTO STN L	427	100	100	332492	100
M6E	LC0622	TORONTO STN L	436	100	100	332928	100
M6E	LC0623	TORONTO STN L	408	100	100	333336	100
M6E	LC0624	TORONTO STN L	491	100	100	333827	100
M6E	LC0625	TORONTO STN L	476	100	100	334303	100
M6E	LC0626	TORONTO STN L	598	100	100	334901	100
M6E	LC0627	TORONTO STN L	576	100	100	335477	100
M6E	LC0628	TORONTO STN L	554	100	100	336031	100
M6E	LC0629	TORONTO STN L	347	100	100	336378	100
M6E	LC0630	TORONTO STN L	568	100	100	336946	100
M6E	LC0631	TORONTO STN L	562	100	100	337508	100
M6E	LC0633	TORONTO STN L	437	100	100	337945	100
M6E	LC0635	TORONTO STN L	435	100	100	338380	100
M6E	LC0637	TORONTO STN L	417	100	100	338797	100
M6E	LC0639	TORONTO STN L	545	100	100	339342	100
M6E	LC0654	TORONTO STN L	0	100	100	339342	100
M6N	LC0632	TORONTO STN L	553	100	100	339895	100
M6N	LC0634	TORONTO STN L	493	100	100	340388	100
M6N	LC0636	TORONTO STN L	366	100	100	340754	100
M6N	LC0638	TORONTO STN L	136	100	100	340890	100
M6N	LC0639	TORONTO STN L	72	100	100	340962	100
M6N	LC0640	TORONTO STN L	502	100	100	341464	100
M6N	LC0641	TORONTO STN L	447	100	100	341911	100
M6N	LC0642	TORONTO STN L	615	100	100	342526	100
M6N	LC0643	TORONTO STN L	345	100	100	342871	100
M6N	LC0644	TORONTO STN L	716	100	100	343587	100
M6N	LC0645	TORONTO STN L	456	100	100	344043	100
M6N	LC0646	TORONTO STN L	621	100	100	344664	100
M6N	LC0647	TORONTO STN L	332	100	100	344996	100
M6N	LC0648	TORONTO STN L	474	100	100	345470	100
M6N	LC0649	TORONTO STN L	578	100	100	346048	100
M6N	LC0650	TORONTO STN L	520	100	100	346568	100
M6N	LC0651	TORONTO STN L	527	100	100	347095	100
M6N	LC0652	TORONTO STN L	152	100	100	347247	100
M6N	LC0653	TORONTO STN L	543	100	100	347790	100
M6N	LC0655	TORONTO STN L	301	100	100	348091	100
M6N	LC0656	TORONTO STN L	0	100	100	348091	100
M6N	LC0657	TORONTO STN L	537	100	100	348628	100
M6E	LB0001	TORONTO RPO EGLINTON-DUFF	33	100	100	348661	100
M6G	LB0001	TORONTO RPO COLLEGE SQUARE	65	100	100	348726	100
M6H	LB0001	TORONTO PO E	120	100	100	348846	100
M6H	LB0001	TORONTO RPO BLOORCOURT	33	100	100	348879	100
M6H	LB0001	TORONTO RPO GALLERIA	54	100	100	348933	100
M6G	LC0501	TORONTO LCD E	175	100	100	349108	100

FSA	Delivery Mode (Route)	Depot	All Points Of Call	Value 1 (%)	Avg Value	Cumulative Points of Call	Cumulative Penetration
M6G	LC0502	TORONTO LCD E	195	100	100	349303	100
M6G	LC0503	TORONTO LCD E	292	100	100	349595	100
M6G	LC0504	TORONTO LCD E	207	100	100	349802	100
M6G	LC0505	TORONTO LCD E	208	100	100	350010	100
M6G	LC0506	TORONTO LCD E	221	100	100	350231	100
M6G	LC0507	TORONTO LCD E	316	100	100	350547	100
M6G	LC0508	TORONTO LCD E	57	100	100	350604	100
M6G	LC0509	TORONTO LCD E	220	100	100	350824	100
M6G	LC0510	TORONTO LCD E	302	100	100	351126	100
M6G	LC0512	TORONTO LCD E	300	100	100	351426	100
M6G	LC0513	TORONTO LCD E	353	100	100	351779	100
M6G	LC0514	TORONTO LCD E	336	100	100	352115	100
M6G	LC0515	TORONTO LCD E	283	100	100	352398	100
M6G	LC0516	TORONTO LCD E	260	100	100	352658	100
M6G	LC0517	TORONTO LCD E	275	100	100	352933	100
M6G	LC0518	TORONTO LCD E	353	100	100	353286	100
M6G	LC0520	TORONTO LCD E	286	100	100	353572	100
M6G	LC0521	TORONTO LCD E	221	100	100	353793	100
M6G	LC0522	TORONTO LCD E	224	100	100	354017	100
M6G	LC0523	TORONTO LCD E	361	100	100	354378	100
M6G	LC0524	TORONTO LCD E	326	100	100	354704	100
M6G	LC0525	TORONTO LCD E	280	100	100	354984	100
M6G	LC0527	TORONTO LCD E	229	100	100	355213	100
M6G	LC0529	TORONTO LCD E	56	100	100	355269	100
M6G	LC0532	TORONTO LCD E	62	100	100	355331	100
M6H	LC0511	TORONTO LCD E	168	100	100	355499	100
M6H	LC0519	TORONTO LCD E	196	100	100	355695	100
M6H	LC0520	TORONTO LCD E	0	100	100	355695	100
M6H	LC0526	TORONTO LCD E	132	100	100	355827	100
M6H	LC0528	TORONTO LCD E	155	100	100	355982	100
M6H	LC0529	TORONTO LCD E	203	100	100	356185	100
M6H	LC0530	TORONTO LCD E	223	100	100	356408	100
M6H	LC0531	TORONTO LCD E	215	100	100	356623	100
M6H	LC0532	TORONTO LCD E	315	100	100	356938	100
M6H	LC0533	TORONTO LCD E	332	100	100	357270	100
M6H	LC0534	TORONTO LCD E	321	100	100	357591	100
M6H	LC0535	TORONTO LCD E	253	100	100	357844	100
M6H	LC0536	TORONTO LCD E	283	100	100	358127	100
M6H	LC0537	TORONTO LCD E	299	100	100	358426	100
M6H	LC0538	TORONTO LCD E	347	100	100	358773	100
M6H	LC0539	TORONTO LCD E	348	100	100	359121	100
M6H	LC0540	TORONTO LCD E	168	100	100	359289	100
M6H	LC0541	TORONTO LCD E	368	100	100	359657	100
M6H	LC0542	TORONTO LCD E	245	100	100	359902	100
M6H	LC0543	TORONTO LCD E	403	100	100	360305	100
M6H	LC0544	TORONTO LCD E	307	100	100	360612	100
M6H	LC0545	TORONTO LCD E	403	100	100	361015	100
M6H	LC0546	TORONTO LCD E	273	100	100	361288	100
M6H	LC0547	TORONTO LCD E	212	100	100	361500	100

FSA	Delivery Mode (Route)	Depot	All Points Of Call	Value 1 (%)	Avg Value	Cumulative Points of Call	Cumulative Penetration
M6H	LC0548	TORONTO LCD E	195	100	100	361695	100
M6H	LC0549	TORONTO LCD E	235	100	100	361930	100
M6H	LC0550	TORONTO LCD E	412	100	100	362342	100
M6H	LC0551	TORONTO LCD E	411	100	100	362753	100
M6H	LC0552	TORONTO LCD E	204	100	100	362957	100
M6H	LC0553	TORONTO LCD E	527	100	100	363484	100
M6H	LC0554	TORONTO LCD E	260	100	100	363744	100
M6H	LC0556	TORONTO LCD E	411	100	100	364155	100
M6H	LC0558	TORONTO LCD E	135	100	100	364290	100
M6J	LB0001	TORONTO PO C	84	100	100	364374	100
M6J	LC0047	TORONTO LCD C	319	100	100	364693	100
M6J	LC0049	TORONTO LCD C	264	100	100	364957	100
M6J	LC0050	TORONTO LCD C	267	100	100	365224	100
M6J	LC0051	TORONTO LCD C	354	100	100	365578	100
M6J	LC0052	TORONTO LCD C	218	100	100	365796	100
M6J	LC0053	TORONTO LCD C	363	100	100	366159	100
M6J	LC0054	TORONTO LCD C	241	100	100	366400	100
M6J	LC0055	TORONTO LCD C	297	100	100	366697	100
M6J	LC0056	TORONTO LCD C	35	100	100	366732	100
M6J	LC0057	TORONTO LCD C	379	100	100	367111	100
M6J	LC0058	TORONTO LCD C	319	100	100	367430	100
M6J	LC0059	TORONTO LCD C	481	100	100	367911	100
M6J	LC0060	TORONTO LCD C	395	100	100	368306	100
M6J	LC0061	TORONTO LCD C	0	100	100	368306	100
M6J	LC0062	TORONTO LCD C	121	100	100	368427	100
M6J	LC0063	TORONTO LCD C	13	100	100	368440	100
M6J	LC0064	TORONTO LCD C	340	100	100	368780	100
M6J	LC0065	TORONTO LCD C	356	100	100	369136	100
M6J	LC0066	TORONTO LCD C	257	100	100	369393	100
M6J	LC0067	TORONTO LCD C	10	100	100	369403	100
M6J	LC0068	TORONTO LCD C	116	100	100	369519	100
M6J	LC0069	TORONTO LCD C	244	100	100	369763	100
M6J	LC0070	TORONTO LCD C	359	100	100	370122	100
M6J	LC0071	TORONTO LCD C	198	100	100	370320	100
M6J	LC0072	TORONTO LCD C	0	100	100	370320	100
M6J	LC0074	TORONTO LCD C	0	100	100	370320	100
M6K	LC0013	TORONTO LCD C	95	100	100	370415	100
M6K	LC0015	TORONTO LCD C	68	100	100	370483	100
M6K	LC0017	TORONTO LCD C	43	100	100	370526	100
M6K	LC0019	TORONTO LCD C	48	100	100	370574	100
M6K	LC0021	TORONTO LCD C	49	100	100	370623	100
M6K	LC0023	TORONTO LCD C	69	100	100	370692	100
M6K	LC0024	TORONTO LCD C	84	100	100	370776	100
M6K	LC0025	TORONTO LCD C	111	100	100	370887	100
M6K	LC0026	TORONTO LCD C	155	100	100	371042	100
M6K	LC0027	TORONTO LCD C	138	100	100	371180	100
M6K	LC0028	TORONTO LCD C	146	100	100	371326	100
M6K	LC0029	TORONTO LCD C	0	100	100	371326	100
M6K	LC0030	TORONTO LCD C	400	100	100	371726	100

FSA	Delivery Mode (Route)	Depot	All Points Of Call	Value 1 (%)	Avg Value	Cumulative Points of Call	Cumulative Penetration
M6K	LC0031	TORONTO LCD C	0	100	100	371726	100
M6K	LC0032	TORONTO LCD C	490	100	100	372216	100
M6K	LC0033	TORONTO LCD C	88	100	100	372304	100
M6K	LC0034	TORONTO LCD C	118	100	100	372422	100
M6K	LC0036	TORONTO LCD C	240	100	100	372662	100
M6K	LC0037	TORONTO LCD C	7	100	100	372669	100
M6K	LC0038	TORONTO LCD C	134	100	100	372803	100
M6K	LC0039	TORONTO LCD C	1	100	100	372804	100
M6K	LC0040	TORONTO LCD C	118	100	100	372922	100
M6K	LC0041	TORONTO LCD C	473	100	100	373395	100
M6K	LC0042	TORONTO LCD C	370	100	100	373765	100
M6K	LC0043	TORONTO LCD C	0	100	100	373765	100
M6K	LC0044	TORONTO LCD C	0	100	100	373765	100
M6K	LC0045	TORONTO LCD C	196	100	100	373961	100
M6K	LC0046	TORONTO LCD C	0	100	100	373961	100
M6K	LC0049	TORONTO LCD C	6	100	100	373967	100
M6R	LC0001	TORONTO LCD C	145	100	100	374112	100
M6R	LC0002	TORONTO LCD C	152	100	100	374264	100
M6R	LC0003	TORONTO LCD C	186	100	100	374450	100
M6R	LC0004	TORONTO LCD C	135	100	100	374585	100
M6R	LC0005	TORONTO LCD C	254	100	100	374839	100
M6R	LC0006	TORONTO LCD C	159	100	100	374998	100
M6R	LC0007	TORONTO LCD C	186	100	100	375184	100
M6R	LC0008	TORONTO LCD C	205	100	100	375389	100
M6R	LC0009	TORONTO LCD C	248	100	100	375637	100
M6R	LC0010	TORONTO LCD C	234	100	100	375871	100
M6R	LC0011	TORONTO LCD C	198	100	100	376069	100
M6R	LC0012	TORONTO LCD C	300	100	100	376369	100
M6R	LC0014	TORONTO LCD C	214	100	100	376583	100
M6R	LC0016	TORONTO LCD C	313	100	100	376896	100
M6R	LC0018	TORONTO LCD C	148	100	100	377044	100
M6R	LC0020	TORONTO LCD C	314	100	100	377358	100
M6R	LC0022	TORONTO LCD C	302	100	100	377660	100
M6J	LB0001	TORONTO RPO DUNDAS DOVERCRT	16	100	100	377676	100
M6L	LB0001	TORONTO RPO NORTH PARK	10	100	100	377686	100
M6L	LC0301	NORTH YORK STN W	362	100	100	378048	100
M6L	LC0302	NORTH YORK STN W	498	100	100	378546	100
M6L	LC0303	NORTH YORK STN W	455	100	100	379001	100
M6L	LC0312	NORTH YORK STN W	336	100	100	379337	100
M6L	LC0314	NORTH YORK STN W	357	100	100	379694	100
M6L	LC0316	NORTH YORK STN W	212	100	100	379906	100
M6L	LC0318	NORTH YORK STN W	289	100	100	380195	100
M6L	LC0319	NORTH YORK STN W	308	100	100	380503	100
M6L	LC0320	NORTH YORK STN W	304	100	100	380807	100
M6L	LC0323	NORTH YORK STN W	317	100	100	381124	100
M6L	LC0324	NORTH YORK STN W	2	100	100	381126	100
M6L	LC0325	NORTH YORK STN W	4	100	100	381130	100
M6M	LC0300	NORTH YORK STN W	511	100	100	381641	100
M6M	LC0304	NORTH YORK STN W	803	100	100	382444	100

FSA	Delivery Mode (Route)	Depot	All Points Of Call	Value 1 (%)	Avg Value	Cumulative Points of Call	Cumulative Penetration
M6M	LC0305	NORTH YORK STN W	133	100	100	382577	100
M6M	LC0306	NORTH YORK STN W	323	100	100	382900	100
M6M	LC0307	NORTH YORK STN W	518	100	100	383418	100
M6M	LC0308	NORTH YORK STN W	506	100	100	383924	100
M6M	LC0309	NORTH YORK STN W	274	100	100	384198	100
M6M	LC0310	NORTH YORK STN W	517	100	100	384715	100
M6M	LC0311	NORTH YORK STN W	182	100	100	384897	100
M6M	LC0313	NORTH YORK STN W	397	100	100	385294	100
M6M	LC0315	NORTH YORK STN W	427	100	100	385721	100
M6M	LC0317	NORTH YORK STN W	635	100	100	386356	100
M6M	LC0320	NORTH YORK STN W	12	100	100	386368	100
M6M	LC0321	NORTH YORK STN W	73	100	100	386441	100
M6M	LC0322	NORTH YORK STN W	175	100	100	386616	100
M6M	LC0324	NORTH YORK STN W	293	100	100	386909	100
M6M	LC0325	NORTH YORK STN W	484	100	100	387393	100
M6M	LC0326	NORTH YORK STN W	91	100	100	387484	100
M6M	LC0327	NORTH YORK STN W	224	100	100	387708	100
M6N	LB0001	TORONTO RPO KEELE	39	100	100	387747	100
M6N	LB0001	YORK RPO JANE PARK PLAZA	56	100	100	387803	100
M6P	LB0001	TORONTO RPO JUNCTION GDNS	80	100	100	387883	100
M6P	LB0001	TORONTO RPO HIGH PARK	15	100	100	387898	100
M6R	LB0001	TORONTO RPO DUNDAS ST	10	100	100	387908	100
M6R	LB0001	TORONTO RPO RONCESVALLES	19	100	100	387927	100
M6P	LB0001	TORONTO LCD 3	0	100	100	387927	100
M6P	LC0301	TORONTO LCD 3	227	100	100	388154	100
M6P	LC0302	TORONTO LCD 3	298	100	100	388452	100
M6P	LC0303	TORONTO LCD 3	379	100	100	388831	100
M6P	LC0304	TORONTO LCD 3	0	100	100	388831	100
M6P	LC0305	TORONTO LCD 3	219	100	100	389050	100
M6P	LC0306	TORONTO LCD 3	148	100	100	389198	100
M6P	LC0307	TORONTO LCD 3	67	100	100	389265	100
M6P	LC0308	TORONTO LCD 3	68	100	100	389333	100
M6P	LC0309	TORONTO LCD 3	165	100	100	389498	100
M6P	LC0310	TORONTO LCD 3	183	100	100	389681	100
M6P	LC0311	TORONTO LCD 3	376	100	100	390057	100
M6P	LC0312	TORONTO LCD 3	143	100	100	390200	100
M6P	LC0313	TORONTO LCD 3	108	100	100	390308	100
M6P	LC0314	TORONTO LCD 3	279	100	100	390587	100
M6P	LC0315	TORONTO LCD 3	156	100	100	390743	100
M6P	LC0316	TORONTO LCD 3	68	100	100	390811	100
M6P	LC0317	TORONTO LCD 3	90	100	100	390901	100
M6P	LC0318	TORONTO LCD 3	66	100	100	390967	100
M6P	LC0319	TORONTO LCD 3	83	100	100	391050	100
M6P	LC0320	TORONTO LCD 3	68	100	100	391118	100
M6P	LC0321	TORONTO LCD 3	186	100	100	391304	100
M6P	LC0322	TORONTO LCD 3	155	100	100	391459	100
M6P	LC0323	TORONTO LCD 3	302	100	100	391761	100
M6P	LC0324	TORONTO LCD 3	299	100	100	392060	100

FSA	Delivery Mode (Route)	Depot	All Points Of Call	Value 1 (%)	Avg Value	Cumulative Points of Call	Cumulative Penetration
M6P	LC0325	TORONTO LCD 3	332	100	100	392392	100
M6P	LC0326	TORONTO LCD 3	251	100	100	392643	100
M6P	LC0327	TORONTO LCD 3	139	100	100	392782	100
M6P	LC0343	TORONTO LCD 3	3	100	100	392785	100
M6P	LC0354	TORONTO LCD 3	77	100	100	392862	100
M6S	LC0327	TORONTO LCD 3	35	100	100	392897	100
M6S	LC0328	TORONTO LCD 3	351	100	100	393248	100
M6S	LC0329	TORONTO LCD 3	387	100	100	393635	100
M6S	LC0330	TORONTO LCD 3	338	100	100	393973	100
M6S	LC0331	TORONTO LCD 3	320	100	100	394293	100
M6S	LC0332	TORONTO LCD 3	207	100	100	394500	100
M6S	LC0333	TORONTO LCD 3	386	100	100	394886	100
M6S	LC0334	TORONTO LCD 3	427	100	100	395313	100
M6S	LC0335	TORONTO LCD 3	283	100	100	395596	100
M6S	LC0336	TORONTO LCD 3	212	100	100	395808	100
M6S	LC0337	TORONTO LCD 3	137	100	100	395945	100
M6S	LC0338	TORONTO LCD 3	385	100	100	396330	100
M6S	LC0339	TORONTO LCD 3	234	100	100	396564	100
M6S	LC0340	TORONTO LCD 3	108	100	100	396672	100
M6S	LC0341	TORONTO LCD 3	210	100	100	396882	100
M6S	LC0342	TORONTO LCD 3	134	100	100	397016	100
M6S	LC0343	TORONTO LCD 3	37	100	100	397053	100
M6S	LC0344	TORONTO LCD 3	258	100	100	397311	100
M6S	LC0345	TORONTO LCD 3	279	100	100	397590	100
M6S	LC0346	TORONTO LCD 3	249	100	100	397839	100
M6S	LC0347	TORONTO LCD 3	171	100	100	398010	100
M6S	LC0348	TORONTO LCD 3	230	100	100	398240	100
M6S	LC0349	TORONTO LCD 3	176	100	100	398416	100
M6S	LC0350	TORONTO LCD 3	142	100	100	398558	100
M6S	LC0351	TORONTO LCD 3	198	100	100	398756	100
M6S	LC0352	TORONTO LCD 3	204	100	100	398960	100
M8V	LC0401	ETOBICOKE STN N	163	100	100	399123	100
M8V	LC0402	ETOBICOKE STN N	112	100	100	399235	100
M8V	LC0403	ETOBICOKE STN N	149	100	100	399384	100
M8V	LC0404	ETOBICOKE STN N	128	100	100	399512	100
M8V	LC0405	ETOBICOKE STN N	160	100	100	399672	100
M8V	LC0406	ETOBICOKE STN N	194	100	100	399866	100
M8V	LC0407	ETOBICOKE STN N	101	100	100	399967	100
M8V	LC0408	ETOBICOKE STN N	116	100	100	400083	100
M8V	LC0409	ETOBICOKE STN N	148	100	100	400231	100
M8V	LC0410	ETOBICOKE STN N	193	100	100	400424	100
M8V	LC0411	ETOBICOKE STN N	195	100	100	400619	100
M8V	LC0412	ETOBICOKE STN N	131	100	100	400750	100
M8V	LC0413	ETOBICOKE STN N	182	100	100	400932	100
M8V	LC0414	ETOBICOKE STN N	263	100	100	401195	100
M8V	LC0415	ETOBICOKE STN N	140	100	100	401335	100
M8V	LC0416	ETOBICOKE STN N	158	100	100	401493	100
M8V	LC0417	ETOBICOKE STN N	117	100	100	401610	100
M8V	LC0418	ETOBICOKE STN N	121	100	100	401731	100

FSA	Delivery Mode (Route)	Depot	All Points Of Call	Value 1 (%)	Avg Value	Cumulative Points of Call	Cumulative Penetration
M8V	LC0419	ETOBICOKE STN N	310	100	100	402041	100
M8V	LC0420	ETOBICOKE STN N	147	100	100	402188	100
M8V	LC0422	ETOBICOKE STN N	115	100	100	402303	100
M8V	LC0424	ETOBICOKE STN N	171	100	100	402474	100
M8V	LC0426	ETOBICOKE STN N	46	100	100	402520	100
M8V	LC0428	ETOBICOKE STN N	107	100	100	402627	100
M8V	LC0430	ETOBICOKE STN N	90	100	100	402717	100
M8V	LC0432	ETOBICOKE STN N	100	100	100	402817	100
M8V	LC0434	ETOBICOKE STN N	108	100	100	402925	100
M8V	LC0436	ETOBICOKE STN N	264	100	100	403189	100
M8V	LC0438	ETOBICOKE STN N	62	100	100	403251	100
M8V	LC0448	ETOBICOKE STN N	0	100	100	403251	100
M8W	LC0421	ETOBICOKE STN N	240	100	100	403491	100
M8W	LC0423	ETOBICOKE STN N	241	100	100	403732	100
M8W	LC0425	ETOBICOKE STN N	150	100	100	403882	100
M8W	LC0427	ETOBICOKE STN N	285	100	100	404167	100
M8W	LC0429	ETOBICOKE STN N	597	100	100	404764	100
M8W	LC0431	ETOBICOKE STN N	308	100	100	405072	100
M8W	LC0433	ETOBICOKE STN N	256	100	100	405328	100
M8W	LC0435	ETOBICOKE STN N	267	100	100	405595	100
M8W	LC0437	ETOBICOKE STN N	331	100	100	405926	100
M8W	LC0439	ETOBICOKE STN N	266	100	100	406192	100
M8W	LC0440	ETOBICOKE STN N	163	100	100	406355	100
M8W	LC0441	ETOBICOKE STN N	244	100	100	406599	100
M8W	LC0442	ETOBICOKE STN N	400	100	100	406999	100
M8W	LC0443	ETOBICOKE STN N	446	100	100	407445	100
M8W	LC0444	ETOBICOKE STN N	335	100	100	407780	100
M8W	LC0445	ETOBICOKE STN N	448	100	100	408228	100
M8W	LC0446	ETOBICOKE STN N	365	100	100	408593	100
M8W	LB0001	ETOBICOKE RPO LONG BRANCH	54	100	100	408647	100
M8X	LB0001	ETOBICOKE RPO ROYAL YRK BLOOR	0	100	100	408647	100
M8Y	LB0001	ETOBICOKE RPO THE QUEENSWAY	34	100	100	408681	100
M8Y	LB0001	ETOBICOKE RPO STONEGATE	15	100	100	408696	100
M8Z	GD0001	ETOBICOKE PO U	1	100	100	408697	100
M8Z	LB0001	ETOBICOKE PO U	0	100	100	408697	100
M8Y	LC0101	ETOBICOKE LCD U	168	100	100	408865	100
M8Y	LC0102	ETOBICOKE LCD U	129	100	100	408994	100
M8Y	LC0103	ETOBICOKE LCD U	156	100	100	409150	100
M8Y	LC0104	ETOBICOKE LCD U	184	100	100	409334	100
M8Y	LC0105	ETOBICOKE LCD U	219	100	100	409553	100
M8Y	LC0106	ETOBICOKE LCD U	297	100	100	409850	100
M8Y	LC0107	ETOBICOKE LCD U	98	100	100	409948	100
M8Y	LC0108	ETOBICOKE LCD U	259	100	100	410207	100
M8Y	LC0109	ETOBICOKE LCD U	313	100	100	410520	100
M8Y	LC0110	ETOBICOKE LCD U	154	100	100	410674	100
M8Y	LC0111	ETOBICOKE LCD U	221	100	100	410895	100
M8Y	LC0112	ETOBICOKE LCD U	137	100	100	411032	100

FSA	Delivery Mode (Route)	Depot	All Points Of Call	Value 1 (%)	Avg Value	Cumulative Points of Call	Cumulative Penetration
M8Y	LC0113	ETOBICOKE LCD U	309	100	100	411341	100
M8Y	LC0114	ETOBICOKE LCD U	157	100	100	411498	100
M8Y	LC0116	ETOBICOKE LCD U	142	100	100	411640	100
M8Y	LC0118	ETOBICOKE LCD U	245	100	100	411885	100
M8Y	LC0120	ETOBICOKE LCD U	66	100	100	411951	100
M8Z	LC0115	ETOBICOKE LCD U	261	100	100	412212	100
M8Z	LC0117	ETOBICOKE LCD U	221	100	100	412433	100
M8Z	LC0119	ETOBICOKE LCD U	134	100	100	412567	100
M8Z	LC0121	ETOBICOKE LCD U	185	100	100	412752	100
M8Z	LC0122	ETOBICOKE LCD U	165	100	100	412917	100
M8Z	LC0123	ETOBICOKE LCD U	394	100	100	413311	100
M8Z	LC0124	ETOBICOKE LCD U	320	100	100	413631	100
M8Z	LC0125	ETOBICOKE LCD U	197	100	100	413828	100
M8Z	LC0126	ETOBICOKE LCD U	217	100	100	414045	100
M8Z	LC0127	ETOBICOKE LCD U	486	100	100	414531	100
M8Z	LC0128	ETOBICOKE LCD U	300	100	100	414831	100
M8Z	LC0129	ETOBICOKE LCD U	0	100	100	414831	100
M8Z	LC0130	ETOBICOKE LCD U	324	100	100	415155	100
M8Z	LC0131	ETOBICOKE LCD U	131	100	100	415286	100
M8Z	LC0132	ETOBICOKE LCD U	96	100	100	415382	100
M8Z	LC0133	ETOBICOKE LCD U	209	100	100	415591	100
M8Z	LC0134	ETOBICOKE LCD U	234	100	100	415825	100
M8Z	LC0135	ETOBICOKE LCD U	386	100	100	416211	100
M8Z	LC0136	ETOBICOKE LCD U	47	100	100	416258	100
M8Z	LC0137	ETOBICOKE LCD U	159	100	100	416417	100
M9A	LB0001	ETOBICOKE PO D	5	100	100	416422	100
M8X	LC0001	ETOBICOKE LCD D	76	100	100	416498	100
M8X	LC0002	ETOBICOKE LCD D	124	100	100	416622	100
M8X	LC0003	ETOBICOKE LCD D	115	100	100	416737	100
M8X	LC0004	ETOBICOKE LCD D	74	100	100	416811	100
M8X	LC0005	ETOBICOKE LCD D	143	100	100	416954	100
M8X	LC0006	ETOBICOKE LCD D	120	100	100	417074	100
M8X	LC0007	ETOBICOKE LCD D	105	100	100	417179	100
M8X	LC0008	ETOBICOKE LCD D	182	100	100	417361	100
M8X	LC0009	ETOBICOKE LCD D	139	100	100	417500	100
M8X	LC0010	ETOBICOKE LCD D	170	100	100	417670	100
M8X	LC0011	ETOBICOKE LCD D	152	100	100	417822	100
M8X	LC0012	ETOBICOKE LCD D	56	100	100	417878	100
M9A	LC0013	ETOBICOKE LCD D	188	100	100	418066	100
M9A	LC0014	ETOBICOKE LCD D	207	100	100	418273	100
M9A	LC0015	ETOBICOKE LCD D	120	100	100	418393	100
M9A	LC0016	ETOBICOKE LCD D	129	100	100	418522	100
M9A	LC0017	ETOBICOKE LCD D	125	100	100	418647	100
M9A	LC0018	ETOBICOKE LCD D	115	100	100	418762	100
M9A	LC0019	ETOBICOKE LCD D	84	100	100	418846	100
M9A	LC0020	ETOBICOKE LCD D	141	100	100	418987	100
M9A	LC0021	ETOBICOKE LCD D	129	100	100	419116	100
M9A	LC0022	ETOBICOKE LCD D	170	100	100	419286	100
M9A	LC0023	ETOBICOKE LCD D	148	100	100	419434	100

FSA	Delivery Mode (Route)	Depot	All Points Of Call	Value 1 (%)	Avg Value	Cumulative Points of Call	Cumulative Penetration
M9A	LC0024	ETOBICOKE LCD D	112	100	100	419546	100
M9A	LC0025	ETOBICOKE LCD D	182	100	100	419728	100
M9A	LC0026	ETOBICOKE LCD D	107	100	100	419835	100
M9A	LC0027	ETOBICOKE LCD D	196	100	100	420031	100
M9A	LC0028	ETOBICOKE LCD D	151	100	100	420182	100
M9A	LC0029	ETOBICOKE LCD D	265	100	100	420447	100
M9A	LC0030	ETOBICOKE LCD D	158	100	100	420605	100
M9A	LC0032	ETOBICOKE LCD D	164	100	100	420769	100
M9A	LC0034	ETOBICOKE LCD D	150	100	100	420919	100
M9A	LC0036	ETOBICOKE LCD D	93	100	100	421012	100
M9A	LC0038	ETOBICOKE LCD D	92	100	100	421104	100
M9A	LC0040	ETOBICOKE LCD D	99	100	100	421203	100
M9A	LC0042	ETOBICOKE LCD D	120	100	100	421323	100
M9A	LC0044	ETOBICOKE LCD D	97	100	100	421420	100
M9A	LC0046	ETOBICOKE LCD D	197	100	100	421617	100
M9A	LC0048	ETOBICOKE LCD D	174	100	100	421791	100
M9A	LC0050	ETOBICOKE LCD D	130	100	100	421921	100
M9B	LC0031	ETOBICOKE LCD D	271	100	100	422192	100
M9B	LC0033	ETOBICOKE LCD D	220	100	100	422412	100
M9B	LC0035	ETOBICOKE LCD D	278	100	100	422690	100
M9B	LC0037	ETOBICOKE LCD D	293	100	100	422983	100
M9B	LC0039	ETOBICOKE LCD D	205	100	100	423188	100
M9B	LC0041	ETOBICOKE LCD D	96	100	100	423284	100
M9B	LC0043	ETOBICOKE LCD D	77	100	100	423361	100
M9B	LC0045	ETOBICOKE LCD D	159	100	100	423520	100
M9B	LC0047	ETOBICOKE LCD D	250	100	100	423770	100
M9B	LC0049	ETOBICOKE LCD D	275	100	100	424045	100
M9B	LC0051	ETOBICOKE LCD D	197	100	100	424242	100
M9B	LC0052	ETOBICOKE LCD D	247	100	100	424489	100
M9B	LC0053	ETOBICOKE LCD D	227	100	100	424716	100
M9B	LC0054	ETOBICOKE LCD D	178	100	100	424894	100
M9B	LC0055	ETOBICOKE LCD D	254	100	100	425148	100
M9B	LC0056	ETOBICOKE LCD D	133	100	100	425281	100
M9B	LC0057	ETOBICOKE LCD D	216	100	100	425497	100
M9B	LC0058	ETOBICOKE LCD D	146	100	100	425643	100
M9B	LC0059	ETOBICOKE LCD D	207	100	100	425850	100
M9B	LC0060	ETOBICOKE LCD D	114	100	100	425964	100
M9B	LC0061	ETOBICOKE LCD D	324	100	100	426288	100
M9B	LC0062	ETOBICOKE LCD D	250	100	100	426538	100
M9B	LC0063	ETOBICOKE LCD D	262	100	100	426800	100
M9B	LC0064	ETOBICOKE LCD D	193	100	100	426993	100
M9B	LC0065	ETOBICOKE LCD D	349	100	100	427342	100
M9B	LC0066	ETOBICOKE LCD D	211	100	100	427553	100
M9B	LC0068	ETOBICOKE LCD D	166	100	100	427719	100
M9A	LB0001	ETOBICOKE RPO THORNCREST	3	100	100	427722	100
M9A	LB0001	ETOBICOKE RPO HUMBERTOWN CTR	15	100	100	427737	100
M9B	LB0001	ETOBICOKE RPO SIX POINTS PLAZ	2	100	100	427739	100

FSA	Delivery Mode (Route)	Depot	All Points Of Call	Value 1 (%)	Avg Value	Cumulative Points of Call	Cumulative Penetration
M9B	LB0001	ETOBICOKE RPO CLOVERDALE MALL	41	100	100	427780	100
M9B	LB0001	ETOBICOKE RPO THE EAST MALL	7	100	100	427787	100
M9C	LB0001	ETOBICOKE RPO SHERWAY GARDENS	36	100	100	427823	100
M9C	LB0001	ETOBICOKE PO E	1	100	100	427824	100
M9C	LB0001	ETOBICOKE PO A	18	100	100	427842	100
M9C	LB0001	ETOBICOKE RPO BURNHAMTHORPE	18	100	100	427860	100
M9C	LC0201	ETOBICOKE LCD A	422	100	100	428282	100
M9C	LC0202	ETOBICOKE LCD A	405	100	100	428687	100
M9C	LC0203	ETOBICOKE LCD A	295	100	100	428982	100
M9C	LC0204	ETOBICOKE LCD A	399	100	100	429381	100
M9C	LC0205	ETOBICOKE LCD A	481	100	100	429862	100
M9C	LC0206	ETOBICOKE LCD A	251	100	100	430113	100
M9C	LC0207	ETOBICOKE LCD A	267	100	100	430380	100
M9C	LC0208	ETOBICOKE LCD A	411	100	100	430791	100
M9C	LC0209	ETOBICOKE LCD A	252	100	100	431043	100
M9C	LC0210	ETOBICOKE LCD A	166	100	100	431209	100
M9C	LC0211	ETOBICOKE LCD A	286	100	100	431495	100
M9C	LC0212	ETOBICOKE LCD A	347	100	100	431842	100
M9C	LC0213	ETOBICOKE LCD A	300	100	100	432142	100
M9C	LC0214	ETOBICOKE LCD A	161	100	100	432303	100
M9C	LC0215	ETOBICOKE LCD A	105	100	100	432408	100
M9C	LC0216	ETOBICOKE LCD A	93	100	100	432501	100
M9C	LC0217	ETOBICOKE LCD A	366	100	100	432867	100
M9C	LC0218	ETOBICOKE LCD A	302	100	100	433169	100
M9C	LC0219	ETOBICOKE LCD A	0	100	100	433169	100
M9C	LC0221	ETOBICOKE LCD A	207	100	100	433376	100
M9C	LC0222	ETOBICOKE LCD A	121	100	100	433497	100
M9C	LC0223	ETOBICOKE LCD A	96	100	100	433593	100
M9C	LC0224	ETOBICOKE LCD A	255	100	100	433848	100
M9C	LC0226	ETOBICOKE LCD A	212	100	100	434060	100
M9L	LC0209	TORONTO LCD WESTON B	154	100	100	434214	100
M9L	LC0211	TORONTO LCD WESTON B	294	100	100	434508	100
M9L	LC0212	TORONTO LCD WESTON B	373	100	100	434881	100
M9L	LC0213	TORONTO LCD WESTON B	126	100	100	435007	100
M9L	LC0215	TORONTO LCD WESTON B	201	100	100	435208	100
M9L	LC0216	TORONTO LCD WESTON B	312	100	100	435520	100
M9L	LC0217	TORONTO LCD WESTON B	205	100	100	435725	100
M9L	LC0218	TORONTO LCD WESTON B	239	100	100	435964	100
M9L	LC0219	TORONTO LCD WESTON B	200	100	100	436164	100
M9L	LC0220	TORONTO LCD WESTON B	410	100	100	436574	100
M9L	LC0221	TORONTO LCD WESTON B	87	100	100	436661	100
M9L	LC0222	TORONTO LCD WESTON B	26	100	100	436687	100
M9L	LC0223	TORONTO LCD WESTON B	80	100	100	436767	100
M9M	LC0201	TORONTO LCD WESTON B	115	100	100	436882	100
M9M	LC0202	TORONTO LCD WESTON B	396	100	100	437278	100
M9M	LC0203	TORONTO LCD WESTON B	303	100	100	437581	100
M9M	LC0204	TORONTO LCD WESTON B	295	100	100	437876	100

FSA	Delivery Mode (Route)	Depot	All Points Of Call	Value 1 (%)	Avg Value	Cumulative Points of Call	Cumulative Penetration
M9M	LC0205	TORONTO LCD WESTON B	356	100	100	438232	100
M9M	LC0206	TORONTO LCD WESTON B	430	100	100	438662	100
M9M	LC0207	TORONTO LCD WESTON B	182	100	100	438844	100
M9M	LC0208	TORONTO LCD WESTON B	392	100	100	439236	100
M9M	LC0210	TORONTO LCD WESTON B	534	100	100	439770	100
M9M	LC0214	TORONTO LCD WESTON B	376	100	100	440146	100
M9M	LC0218	TORONTO LCD WESTON B	602	100	100	440748	100
M9M	LC0220	TORONTO LCD WESTON B	0	100	100	440748	100
M9M	LC0222	TORONTO LCD WESTON B	341	100	100	441089	100
M9M	LC0223	TORONTO LCD WESTON B	4	100	100	441093	100
M9M	LC0224	TORONTO LCD WESTON B	152	100	100	441245	100
M9M	LB0001	TORONTO RPO FINCHDALE MALL	52	100	100	441297	100
M9N	LB0001	YORK RPO OLD WESTON	75	100	100	441372	100
M9N	GD0001	YORK STN WESTON A	1	100	100	441373	100
M9N	LC0426	YORK STN WESTON A	158	100	100	441531	100
M9N	LC0428	YORK STN WESTON A	262	100	100	441793	100
M9N	LC0430	YORK STN WESTON A	586	100	100	442379	100
M9N	LC0431	YORK STN WESTON A	344	100	100	442723	100
M9N	LC0432	YORK STN WESTON A	356	100	100	443079	100
M9N	LC0434	YORK STN WESTON A	365	100	100	443444	100
M9N	LC0435	YORK STN WESTON A	162	100	100	443606	100
M9N	LC0436	YORK STN WESTON A	630	100	100	444236	100
M9N	LC0437	YORK STN WESTON A	337	100	100	444573	100
M9N	LC0438	YORK STN WESTON A	0	100	100	444573	100
M9N	LC0439	YORK STN WESTON A	389	100	100	444962	100
M9N	LC0441	YORK STN WESTON A	359	100	100	445321	100
M9N	LC0443	YORK STN WESTON A	197	100	100	445518	100
M9P	LC0414	YORK STN WESTON A	429	100	100	445947	100
M9P	LC0418	YORK STN WESTON A	275	100	100	446222	100
M9P	LC0419	YORK STN WESTON A	248	100	100	446470	100
M9P	LC0420	YORK STN WESTON A	328	100	100	446798	100
M9P	LC0421	YORK STN WESTON A	263	100	100	447061	100
M9P	LC0422	YORK STN WESTON A	431	100	100	447492	100
M9P	LC0423	YORK STN WESTON A	318	100	100	447810	100
M9P	LC0424	YORK STN WESTON A	307	100	100	448117	100
M9P	LC0425	YORK STN WESTON A	314	100	100	448431	100
M9P	LC0426	YORK STN WESTON A	63	100	100	448494	100
M9P	LC0427	YORK STN WESTON A	349	100	100	448843	100
M9P	LC0429	YORK STN WESTON A	410	100	100	449253	100
M9P	LC0433	YORK STN WESTON A	395	100	100	449648	100
M9R	LC0401	YORK STN WESTON A	491	100	100	450139	100
M9R	LC0402	YORK STN WESTON A	263	100	100	450402	100
M9R	LC0403	YORK STN WESTON A	430	100	100	450832	100
M9R	LC0404	YORK STN WESTON A	274	100	100	451106	100
M9R	LC0405	YORK STN WESTON A	423	100	100	451529	100
M9R	LC0406	YORK STN WESTON A	219	100	100	451748	100
M9R	LC0407	YORK STN WESTON A	261	100	100	452009	100
M9R	LC0408	YORK STN WESTON A	262	100	100	452271	100
M9R	LC0409	YORK STN WESTON A	220	100	100	452491	100

FSA	Delivery Mode (Route)	Depot	All Points Of Call	Value 1 (%)	Avg Value	Cumulative Points of Call	Cumulative Penetration
M9R	LC0410	YORK STN WESTON A	221	100	100	452712	100
M9R	LC0411	YORK STN WESTON A	327	100	100	453039	100
M9R	LC0412	YORK STN WESTON A	311	100	100	453350	100
M9R	LC0413	YORK STN WESTON A	322	100	100	453672	100
M9R	LC0415	YORK STN WESTON A	388	100	100	454060	100
M9R	LC0416	YORK STN WESTON A	227	100	100	454287	100
M9R	LC0417	YORK STN WESTON A	379	100	100	454666	100
M9R	LC0438	YORK STN WESTON A	0	100	100	454666	100
M9N	LB0001	NORTH YORK RPO JANE TRETHEWEY	7	100	100	454673	100
M9R	LB0001	ETOBICOKE RPO MARTINWAY PLAZA	0	100	100	454673	100
M9R	LB0001	ETOBICOKE RPO RICHVIEW	29	100	100	454702	100
M9R	LB0001	ETOBICOKE RPO WESTWAY CENTRE	15	100	100	454717	100
M9V	LB0001	ETOBICOKE RPO THISTLETOWN	10	100	100	454727	100
M9V	LB0001	ETOBICOKE RPO ALBION SHOPPERS	184	100	100	454911	100
M9V	GD0001	ETOBICOKE STN C	1	100	100	454912	100
M9V	LC0101	ETOBICOKE STN C	279	100	100	455191	100
M9V	LC0102	ETOBICOKE STN C	363	100	100	455554	100
M9V	LC0103	ETOBICOKE STN C	287	100	100	455841	100
M9V	LC0104	ETOBICOKE STN C	298	100	100	456139	100
M9V	LC0105	ETOBICOKE STN C	399	100	100	456538	100
M9V	LC0106	ETOBICOKE STN C	395	100	100	456933	100
M9V	LC0107	ETOBICOKE STN C	301	100	100	457234	100
M9V	LC0108	ETOBICOKE STN C	369	100	100	457603	100
M9V	LC0109	ETOBICOKE STN C	392	100	100	457995	100
M9V	LC0110	ETOBICOKE STN C	253	100	100	458248	100
M9V	LC0111	ETOBICOKE STN C	355	100	100	458603	100
M9V	LC0112	ETOBICOKE STN C	263	100	100	458866	100
M9V	LC0113	ETOBICOKE STN C	407	100	100	459273	100
M9V	LC0114	ETOBICOKE STN C	302	100	100	459575	100
M9V	LC0115	ETOBICOKE STN C	291	100	100	459866	100
M9V	LC0116	ETOBICOKE STN C	283	100	100	460149	100
M9V	LC0117	ETOBICOKE STN C	425	100	100	460574	100
M9V	LC0118	ETOBICOKE STN C	453	100	100	461027	100
M9V	LC0119	ETOBICOKE STN C	397	100	100	461424	100
M9V	LC0120	ETOBICOKE STN C	236	100	100	461660	100
M9V	LC0121	ETOBICOKE STN C	289	100	100	461949	100
M9V	LC0122	ETOBICOKE STN C	332	100	100	462281	100
M9V	LC0123	ETOBICOKE STN C	286	100	100	462567	100
M9V	LC0124	ETOBICOKE STN C	190	100	100	462757	100
M9V	LC0125	ETOBICOKE STN C	278	100	100	463035	100
M9V	LC0126	ETOBICOKE STN C	0	100	100	463035	100
M9V	LC0127	ETOBICOKE STN C	187	100	100	463222	100
M9W	LB0001	ETOBICOKE RPO REXDALE	4	100	100	463226	100
M9W	LC0001	ETOBICOKE LCD B	46	100	100	463272	100
M9W	LC0002	ETOBICOKE LCD B	189	100	100	463461	100
M9W	LC0003	ETOBICOKE LCD B	339	100	100	463800	100

FSA	Delivery Mode (Route)	Depot	All Points Of Call	Value 1 (%)	Avg Value	Cumulative Points of Call	Cumulative Penetration
M9W	LC0004	ETOBICOKE LCD B	341	100	100	464141	100
M9W	LC0005	ETOBICOKE LCD B	178	100	100	464319	100
M9W	LC0006	ETOBICOKE LCD B	138	100	100	464457	100
M9W	LC0008	ETOBICOKE LCD B	332	100	100	464789	100
M9W	LC0009	ETOBICOKE LCD B	67	100	100	464856	100
M9W	LC0010	ETOBICOKE LCD B	314	100	100	465170	100
M9W	LC0011	ETOBICOKE LCD B	149	100	100	465319	100
M9W	LC0012	ETOBICOKE LCD B	0	100	100	465319	100
M9W	LC0013	ETOBICOKE LCD B	118	100	100	465437	100
M9W	LC0014	ETOBICOKE LCD B	250	100	100	465687	100
M9W	LC0015	ETOBICOKE LCD B	90	100	100	465777	100
M9W	LC0016	ETOBICOKE LCD B	297	100	100	466074	100
M9W	LC0017	ETOBICOKE LCD B	178	100	100	466252	100
M9W	LC0018	ETOBICOKE LCD B	272	100	100	466524	100
M9W	LC0019	ETOBICOKE LCD B	9	100	100	466533	100
M9W	LC0020	ETOBICOKE LCD B	375	100	100	466908	100
M9W	LC0021	ETOBICOKE LCD B	182	100	100	467090	100
M9W	LC0022	ETOBICOKE LCD B	312	100	100	467402	100
M9W	LC0023	ETOBICOKE LCD B	354	100	100	467756	100
M9W	LC0024	ETOBICOKE LCD B	335	100	100	468091	100
M9W	LC0025	ETOBICOKE LCD B	397	100	100	468488	100
M9W	LC0026	ETOBICOKE LCD B	310	100	100	468798	100
M9W	LC0028	ETOBICOKE LCD B	0	100	100	468798	100
M9W	SS0201	ETOBICOKE LCD B	523	100	100	469321	100
M9W	SS0202	ETOBICOKE LCD B	0	100	100	469321	100
M9W	SS0203	ETOBICOKE LCD B	454	100	100	469775	100
M9W	SS0204	ETOBICOKE LCD B	302	100	100	470077	100
L1V	LC0002	PICKERING LCD MAIN	719	100	100	470796	100
L4L	LC0001	WOODBIDGE STN MAIN	0	0	0	470796	100
M1E	LB0001	SCARBOROUGH STN WEST HILL	0	0	0	470796	100
M1G	LC0707	SCARBOROUGH LCD C	0	0	0	470796	100
M1H	LC0709	SCARBOROUGH LCD C	0	0	0	470796	100
M1H	LC0711	SCARBOROUGH LCD C	0	0	0	470796	100
M1H	LC0719	SCARBOROUGH LCD C	0	0	0	470796	100
M1K	LB0001	SCARBOROUGH LCD 11	0	0	0	470796	100
M1P	LB0001	SCARBOROUGH PO D	0	0	0	470796	100
M1P	DR0000	SCARBOROUGH LCD D	0	0	0	470796	100
M1P	LC0611	SCARBOROUGH LCD D	0	0	0	470796	100
M1P	LC0613	SCARBOROUGH LCD D	0	0	0	470796	100
M1S	LC0036	TORONTO LCD AGINCOURT	0	0	0	470796	100
M1S	LB0001	SCARBOROUGH STN AGINCOURT	0	0	0	470796	100
M1X	LC0301	TORONTO LCD AGINCOURT 4	0	0	0	470796	100
M1X	LC0305	TORONTO LCD AGINCOURT 4	0	0	0	470796	100
M1X	LC0321	TORONTO LCD AGINCOURT 4	0	0	0	470796	100
M1W	LB0001	SCARBOROUGH STN F	0	0	0	470796	100
M1W	LB0001	SCARBOROUGH RPO BRIDLEWOOD MALL	0	0	0	470796	100
M2H	DR0000	WILLOWDALE LCD 2	0	0	0	470796	100

FSA	Delivery Mode (Route)	Depot	All Points Of Call	Value 1 (%)	Avg Value	Cumulative Points of Call	Cumulative Penetration
M2K	DR0000	WILLOWDALE LCD B	0	0	0	470796	100
M2N	LB0001	WILLOWDALE PO A	0	0	0	470796	100
M2K	LB0001	WILLOWDALE PO B	0	0	0	470796	100
M3B	LC0003	TORONTO LCD DON MILLS	0	0	0	470796	100
M3B	LC0005	TORONTO LCD DON MILLS	0	0	0	470796	100
M3M	LB0001	TORONTO LCD DOWNSVIEW A	0	0	0	470796	100
M3J	DR0000	TORONTO LCD DOWNSVIEW C	0	0	0	470796	100
M3N	DR0000	TORONTO LCD DOWNSVIEW C	0	0	0	470796	100
M4A	GD0001	NORTH YORK STN O	0	0	0	470796	100
M4A	LB0001	NORTH YORK STN O	0	0	0	470796	100
M4B	LC0113	NORTH YORK STN O	0	0	0	470796	100
M4G	LC0203	TORONTO STN R	0	0	0	470796	100
M4K	DR0000	TORONTO STN J	0	0	0	470796	100
M4M	LB0001	TORONTO RPO LESLIE ST	15	0	0	470811	100
M4L	DR0000	TORONTO STN G	0	0	0	470811	100
M4M	DR0000	TORONTO STN G	0	0	0	470811	100
M4M	LC0403	TORONTO STN G	0	0	0	470811	100
M4M	LC0409	TORONTO STN G	0	0	0	470811	100
M4M	LC0417	TORONTO STN G	0	0	0	470811	100
M4M	LC0421	TORONTO STN G	0	0	0	470811	100
M4P	LB0001	TORONTO PO K	0	0	0	470811	100
M4N	LC0004	TORONTO LCD K	0	0	0	470811	100
M4P	LC0021	TORONTO LCD K	0	0	0	470811	100
M4S	DR0000	TORONTO LCD Q	0	0	0	470811	100
M4S	LC0219	TORONTO LCD Q	0	0	0	470811	100
M4T	LC0206	TORONTO LCD Q	0	0	0	470811	100
M4T	LC0212	TORONTO LCD Q	0	0	0	470811	100
M4T	LC0217	TORONTO LCD Q	0	0	0	470811	100
M4W	DR0000	TORONTO LCD F	0	0	0	470811	100
M5A	DR0000	TORONTO LCD ADELAIDE	0	0	0	470811	100
M5B	DR0000	TORONTO LCD 2	0	0	0	470811	100
M5C	DR0000	TORONTO LCD 2	0	0	0	470811	100
M5E	DR0000	TORONTO LCD 2	0	0	0	470811	100
M5E	LC0237	TORONTO LCD 2	0	0	0	470811	100
M5G	DR0000	TORONTO LCD 2	0	0	0	470811	100
M5G	LC0205	TORONTO LCD 2	0	0	0	470811	100
M5G	LC0209	TORONTO LCD 2	0	0	0	470811	100
M5G	LC0229	TORONTO LCD 2	0	0	0	470811	100
M5H	DR0000	TORONTO LCD 1	0	0	0	470811	100
M5H	LC0105	TORONTO LCD 1	0	0	0	470811	100
M5H	LC0113	TORONTO LCD 1	0	0	0	470811	100
M5H	LC0125	TORONTO LCD 1	0	0	0	470811	100
M5H	MR0001	TORONTO LCD 1	0	0	0	470811	100
M5J	DR0000	TORONTO LCD 1	0	0	0	470811	100
M5J	LC0117	TORONTO LCD 1	0	0	0	470811	100
M5J	LB0001	TORONTO PO ROYAL BANK	0	0	0	470811	100
M5J	LB0001	TORONTO RPO BROOKFIELD	25	0	0	470836	99.99
M5K	DR0000	TORONTO STN TORONTO DOM	0	0	0	470836	99.99
M5L	DR0000	TORONTO STN COMMERCE COURT	0	0	0	470836	99.99

FSA	Delivery Mode (Route)	Depot	All Points Of Call	Value 1 (%)	Avg Value	Cumulative Points of Call	Cumulative Penetration
M5L	LB0001	TORONTO STN COMMERCE COURT	0	0	0	470836	99.99
M5S	LC0726	TORONTO LCD P	0	0	0	470836	99.99
M5S	LC0739	TORONTO LCD P	0	0	0	470836	99.99
M5S	MR0098	TORONTO LCD P	0	0	0	470836	99.99
M5T	DR0000	TORONTO LCD B	0	0	0	470836	99.99
M5T	LC0311	TORONTO LCD B	0	0	0	470836	99.99
M5V	DR0000	TORONTO LCD B	0	0	0	470836	99.99
M5V	LB0001	TORONTO RPO KING ST W	34	0	0	470870	99.98
M5V	LB0001	TORONTO RPO QUEEN BEVERLY	34	0	0	470904	99.98
M5V	LB0001	TORONTO RPO QUEEN BATHURST	14	0	0	470918	99.97
M5V	LB0001	TORONTO RPO LIBERTY VILLAGE	7	0	0	470925	99.97
M5V	LB0001	TORONTO RPO QUEENS QUAY	0	0	0	470925	99.97
M5W	LB0002	TORONTO STN A	0	0	0	470925	99.97
M5W	LB0003	TORONTO STN A	0	0	0	470925	99.97
M5W	LB0005	TORONTO STN A	0	0	0	470925	99.97
M5X	DR0000	TORONTO STN 1ST CAN PLACE	0	0	0	470925	99.97
M5X	LB0001	TORONTO STN 1ST CAN PLACE	0	0	0	470925	99.97
M6B	LB0001	TORONTO STN T	0	0	0	470925	99.97
M6E	DR0000	TORONTO STN L	0	0	0	470925	99.97
M6G	DR0000	TORONTO LCD E	0	0	0	470925	99.97
M6H	DR0000	TORONTO LCD E	0	0	0	470925	99.97
M6H	GD0001	TORONTO LCD E	0	0	0	470925	99.97
M6J	DR0000	TORONTO LCD C	0	0	0	470925	99.97
M6J	GD0001	TORONTO LCD C	0	0	0	470925	99.97
M6K	LC0035	TORONTO LCD C	0	0	0	470925	99.97
M6K	LC0048	TORONTO LCD C	0	0	0	470925	99.97
M6R	DR0000	TORONTO LCD C	0	0	0	470925	99.97
M6M	DR0000	NORTH YORK STN W	0	0	0	470925	99.97
M6M	LC0316	NORTH YORK STN W	0	0	0	470925	99.97
M6P	DR0000	TORONTO LCD 3	0	0	0	470925	99.97
M6S	DR0000	TORONTO LCD 3	0	0	0	470925	99.97
M6S	LB0001	TORONTO RPO BLOOR WEST	66	0	0	470991	99.96
M7A	DR0000	TORONTO STN PROVINCIAL GOVT	0	0	0	470991	99.96
M7Y	DR0000	TORONTO STN BRM B	0	0	0	470991	99.96
M7Y	LB0001	TORONTO STN BRM B	0	0	0	470991	99.96
M8V	LB0001	ETOBICOKE RPO MIMICO	1	0	0	470992	99.96
M8V	LB0001	ETOBICOKE RPO LAKE SHORE VLG	0	0	0	470992	99.96
M9A	DR0000	ETOBICOKE LCD D	0	0	0	470992	99.96
M9C	LC0220	ETOBICOKE LCD A	0	0	0	470992	99.96
M9C	LC0228	ETOBICOKE LCD A	0	0	0	470992	99.96
M9L	LB0001	TORONTO LCD WESTON B	0	0	0	470992	99.96
M9M	LC0221	TORONTO LCD WESTON B	0	0	0	470992	99.96
M9L	LB0001	NORTH YORK STN WESTON B	0	0	0	470992	99.96
M9R	LC0419	YORK STN WESTON A	0	0	0	470992	99.96
M9W	LB0001	ETOBICOKE PO B	0	0	0	470992	99.96

FSA	Delivery Mode (Route)	Depot	All Points Of Call	Value 1 (%)	Avg Value	Cumulative Points of Call	Cumulative Penetration
M9W	LC0007	ETOBICOKE LCD B	0	0	0	470992	99.96

Your Targeting Report

Postal Station Summary



To avoid transportation charges, you may want to deposit your Neighbourhood Mail™ directly at each postal station responsible for your mailing. The table below provides you with a list of post offices where you need to induct your mailing, and how many pieces must be deposited at each location.

	HOUSES	APARTMENTS	FARMS	BUSINESSES	TOTAL POINTS OF CALL
PICKERING LCD MAIN1740 KINGSTON RD PICKERING ON L1V 1C0					
TOTAL	4640	0	0	0	4640
UNIONVILLE LCD 23930 14TH AVE MARKHAM ON L3R 2K0					
TOTAL	7993	0	0	0	7993
UNIONVILLE LCD 131 BRODIE DR RICHMOND HILL ON L3R 3K0					
TOTAL	4777	0	0	0	4777
MARKHAM RPO WARDEN CENTRE7060 WARDEN AVE MARKHAM ON L3R 5Y0					
TOTAL	38	0	0	0	38
THORNHILL RPO THORNHILL EAST1-2900 STEELES AVE E THORNHILL ON L3T 2A0					
TOTAL	10	0	0	0	10
THORNHILL LCD MAIN707 CREDITSTONE RD CONCORD ON L3T 2C0					
TOTAL	5390	0	0	0	5390
THORNHILL LCD 2031 BRODIE DR RICHMOND HILL ON L4B 4W0					
TOTAL	4686	0	0	0	4686
CONCORD STN MAIN707 CREDITSTONE RD CONCORD ON L4K 1A0					
TOTAL	833	0	0	0	833
CONCORD RPO GLEN SHEILDS80 GLEN SHEILDS AVE CONCORD ON L4K 2B0					
TOTAL	2	0	0	0	2
WOODBRIIDGE STN MAIN707 CREDITSTONE RD CONCORD ON L4L 1A0					
TOTAL	662	0	0	0	662
MISSISSAUGA LCD 21-340 MATHESON BLVD E MISSISSAUGA ON L4Y 2A0					
TOTAL	4417	0	0	0	4417
MISSISSAUGA STN PORT CREDIT1-890 RANGEVIEW RD MISSISSAUGA ON L5E 1G0					
TOTAL	1546	0	0	0	1546
MISSISSAUGA LCD MALTON26 HALE RD BRAMPTON ON L5T 2G0					
TOTAL	3453	0	0	0	3453
BRAMPTON LCD B2-26 HALE RD BRAMPTON ON L6W 1B0					
GRAND TOTAL	470992	0	0	0	470992

	HOUSES	APARTMENTS	FARMS	BUSINESSES	TOTAL POINTS OF CALL
TOTAL	133	0	0	0	133
SCARBOROUGH RPO MILNER1152 MORNINGSIDE AVE SCARBOROUGH ON M1B 3A0					
TOTAL	18	0	0	0	18
TORONTO LCD MALVERN100-280 PROGRESS AVE SCARBOROUGH ON M1B 3C0					
TOTAL	14595	0	0	0	14595
SCARBOROUGH RPO ABBY LANE1022-91 RYLANDER BLVD SCARBOROUGH ON M1B 5M0					
TOTAL	32	0	0	0	32
SCARBOROUGH RPO RAVINE PARK PLA1-265 PORT UNION RD SCARBOROUGH ON M1C 2L0					
TOTAL	50	0	0	0	50
SCARBOROUGH RPO GUILDWOOD PLAZA105 GUILDWOOD PKY SCARBOROUGH ON M1E 1N0					
TOTAL	13	0	0	0	13
TORONTO LCD WEST HILL5-280 PROGRESS AVE SCARBOROUGH ON M1E 2P0					
TOTAL	20008	0	0	0	20008
SCARBOROUGH STN WEST HILL280 PROGRESS AVE SCARBOROUGH ON M1E 2S0					
TOTAL	0	0	0	0	0
SCARBOROUGH RPO MORNINGSIDE255 MORNINGSIDE AVE SCARBOROUGH ON M1E 3E0					
TOTAL	56	0	0	0	56
SCARBOROUGH RPO ORTON PARK1-136 ORTON PARK RD SCARBOROUGH ON M1G 2V0					
TOTAL	4	0	0	0	4
SCARBOROUGH LCD C100-280 PROGRESS AVE SCARBOROUGH ON M1H 1A0					
TOTAL	8239	0	0	0	8239
SCARBOROUGH RPO CEDAR HEIGHTS629 MARKHAM RD SCARBOROUGH ON M1H 2A0					
TOTAL	108	0	0	0	108
SCARBOROUGH RPO MCCOWAN SQUARE1-1235 MCCOWAN RD SCARBOROUGH ON M1H 3K0					
TOTAL	11	0	0	0	11
SCARBOROUGH RPO MCCOWAN1-685 MCCOWAN RD SCARBOROUGH ON M1J 1J0					
TOTAL	68	0	0	0	68
SCARBOROUGH LCD 11155 ASHTONBEE RD SCARBOROUGH ON M1K 2M0					
TOTAL	29559	0	0	0	29559
SCARBOROUGH STN A2439 EGLINTON AVE E SCARBOROUGH ON M1K 2N0					
TOTAL	33	0	0	0	33
SCARBOROUGH RPO EASTOWN CENTRE1-2682 EGLINTON AVE E SCARBOROUGH ON M1K 2S0					
TOTAL	49	0	0	0	49
GRAND TOTAL	470992	0	0	0	470992

	HOUSES	APARTMENTS	FARMS	BUSINESSES	TOTAL POINTS OF CALL
SCARBOROUGH RPO EGLINTON SQUARE1-70 EGLINTON SQ SCARBOROUGH ON M1L 4T0					
TOTAL	10	0	0	0	10
SCARBOROUGH RPO CLIFFCREST SDM2999 KINGSTON RD SCARBOROUGH ON M1M 1P0					
TOTAL	30	0	0	0	30
SCARBOROUGH RPO TERRY TOWN2369 KINGSTON RD SCARBOROUGH ON M1N 1T0					
TOTAL	38	0	0	0	38
SCARBOROUGH RPO WHITE SHIELDS1-2300 LAWRENCE AVE E SCARBOROUGH ON M1P 2R0					
TOTAL	100	0	0	0	100
SCARBOROUGH PO D280 PROGRESS AVE SCARBOROUGH ON M1P 2Z0					
TOTAL	1	0	0	0	1
SCARBOROUGH RPO TOWN CENTRE1-300 BOROUG DR SCARBOROUGH ON M1P 4P0					
TOTAL	10	0	0	0	10
SCARBOROUGH LCD D4-280 PROGRESS AVE SCARBOROUGH ON M1R 3C0					
TOTAL	12308	0	0	0	12308
SCARBOROUGH RPO PARKWAY MALL31-85 ELLESMERE RD SCARBOROUGH ON M1R 4B0					
TOTAL	51	0	0	0	51
TORONTO LCD AGINCOURT280 PROGRESS AVE SCARBOROUGH ON M1S 1T0					
TOTAL	12415	0	0	0	12415
SCARBOROUGH STN AGINCOURT1-280 PROGRESS AVE SCARBOROUGH ON M1S 1V0					
TOTAL	0	0	0	0	0
SCARBOROUGH RPO FINCH-MIDLAND103-4190 FINCH AVE E SCARBOROUGH ON M1S 4T0					
TOTAL	37	0	0	0	37
SCARBOROUGH RPO HUNTINGWOOD1-2355 WARDEN AVE SCARBOROUGH ON M1T 1V0					
TOTAL	10	0	0	0	10
SCARBOROUGH RPO SHEPPARD PHARM1-2901 SHEPPARD AVE E SCARBOROUGH ON M1T 3J0					
TOTAL	18	0	0	0	18
SCARBOROUGH RPO AGINCOURT3607 SHEPPARD AVE E SCARBOROUGH ON M1T 3L0					
TOTAL	65	0	0	0	65
SCARBOROUGH RPO WOODSIDE SQUARE161-1571 SANDHURST CIR SCARBOROUGH ON M1V 1V0					
TOTAL	108	0	0	0	108
TORONTO LCD AGINCOURT 42-280 PROGRESS AVE SCARBOROUGH ON M1V 2T0					
TOTAL	14522	0	0	0	14522
SCARBOROUGH RPO MILLIKEN1-5671 STEELES AVE E SCARBOROUGH ON M1V 5P0					
TOTAL	46	0	0	0	46
GRAND TOTAL	470992	0	0	0	470992

	HOUSES	APARTMENTS	FARMS	BUSINESSES	TOTAL POINTS OF CALL
SCARBOROUGH STN F280 PROGRESS AVE SCARBOROUGH ON M1W 2K0					
TOTAL	17262	0	0	0	17262
SCARBOROUGH RPO BRIDLEWOOD MALL1-2900 WARDEN AVE SCARBOROUGH ON M1W 2S0					
TOTAL	0	0	0	0	0
SCARBOROUGH RPO VILLAGE SQUARE2942 FINCH AVE E SCARBOROUGH ON M1W 2T0					
TOTAL	18	0	0	0	18
WILLOWDALE LCD 255 TEMPO AVE NORTH YORK ON M2H 1A0					
TOTAL	10893	0	0	0	10893
NORTH YORK RPO DEXTER5899 LESLIE ST NORTH YORK ON M2H 1J0					
TOTAL	42	0	0	0	42
NORTH YORK RPO LESLIE NYMARK1-4865 LESLIE ST NORTH YORK ON M2J 2K0					
TOTAL	46	0	0	0	46
NORTH YORK RPO DON VALLEY2075-1800 SHEPPARD AVE E NORTH YORK ON M2J 5B0					
TOTAL	10	0	0	0	10
NORTH YORK RPO CUMMER3299 BAYVIEW AVE NORTH YORK ON M2K 1A0					
TOTAL	68	0	0	0	68
WILLOWDALE LCD B699 SHEPPARD AVE E NORTH YORK ON M2K 1E0					
TOTAL	2625	0	0	0	2625
NORTH YORK RPO BAYVIEW VILLAGE7A-2901 BAYVIEW AVE NORTH YORK ON M2K 1H0					
TOTAL	124	0	0	0	124
NORTH YORK RPO YORK MILLS PLAZ1-2528 BAYVIEW AVE NORTH YORK ON M2L 1A0					
TOTAL	5	0	0	0	5
NORTH YORK RPO CENTERPOINT6428 YONGE ST NORTH YORK ON M2M 4J0					
TOTAL	139	0	0	0	139
NORTH YORK RPO YONGE AND FINCH5576 YONGE ST NORTH YORK ON M2N 5S0					
TOTAL	14	0	0	0	14
WILLOWDALE PO AB-4841 YONGE ST NORTH YORK ON M2N 5T0					
TOTAL	0	0	0	0	0
NORTH YORK RPO SHEPPARD CENTREB6-4841 YONGE ST NORTH YORK ON M2N 5W0					
TOTAL	134	0	0	0	134
NORTH YORK RPO THE CONCOURSE1-1057 STEELES AVE W NORTH YORK ON M2R 2S0					
TOTAL	204	0	0	0	204
WILLOWDALE STN D1-6035 BATHURST ST NORTH YORK ON M2R 3G0					
GRAND TOTAL	470992	0	0	0	470992

	HOUSES	APARTMENTS	FARMS	BUSINESSES	TOTAL POINTS OF CALL
TOTAL	5072	0	0	0	5072
NORTH YORK RPO PARKWOODS PLAZA1285 YORK MILLS RD NORTH YORK ON M3A 1Z0					
TOTAL	32	0	0	0	32
TORONTO RPO YK MILLS LESLIE1859 LESLIE ST NORTH YORK ON M3B 1X0					
TOTAL	32	0	0	0	32
WILLOWDALE PO B70 WYNFORD DR NORTH YORK ON M3C 0B0					
TOTAL	0	0	0	0	0
WILLOWDALE LCD L70 WYNFORD DR NORTH YORK ON M3C 1J0					
TOTAL	3794	0	0	0	3794
NORTH YORK RPO DON MILLS2-946 LAWRENCE AVE E NORTH YORK ON M3C 1P0					
TOTAL	14	0	0	0	14
NORTH YORK RPO FLEMINGDON1-747 DON MILLS RD NORTH YORK ON M3C 1S0					
TOTAL	15	0	0	0	15
TORONTO LCD DON MILLS70 WYNFORD DR NORTH YORK ON M3C 2E0					
TOTAL	9517	0	0	0	9517
NORTH YORK STN DON MILLS1-70 WYNFORD DR NORTH YORK ON M3C 2H0					
TOTAL	34	0	0	0	34
TORONTO RPO SHEPPARD PLAZA592 SHEPPARD AVE W NORTH YORK ON M3H 2W0					
TOTAL	2	0	0	0	2
NORTH YORK RPO DOWNSVIEW5-1027 FINCH AVE W NORTH YORK ON M3J 2C0					
TOTAL	82	0	0	0	82
NORTH YORK RPO KEELE SHEPPARD3364 KEELE ST NORTH YORK ON M3J 3L0					
TOTAL	42	0	0	0	42
NORTH YORK RPO STEELES WEST6-2215 STEELES AVE W NORTH YORK ON M3J 3N0					
TOTAL	13	0	0	0	13
NORTH YORK RPO JANE WILSON1-1597 WILSON AVE NORTH YORK ON M3L 1B0					
TOTAL	122	0	0	0	122
TORONTO RPO KEELE WILSON1116 WILSON AVE TORONTO ON M3M 1G0					
TOTAL	30	0	0	0	30
TORONTO LCD DOWNSVIEW A66 RAY AVE YORK ON M3M 2G0					
TOTAL	16118	0	0	0	16118
WILLOWDALE LCD N500 OAKDALE RD NORTH YORK ON M3N 0A0					
TOTAL	8344	0	0	0	8344
GRAND TOTAL	470992	0	0	0	470992

	HOUSES	APARTMENTS	FARMS	BUSINESSES	TOTAL POINTS OF CALL
NORTH YORK RPO JANE-FINCH MALL1-3975 JANE ST NORTH YORK ON M3N 2K0					
TOTAL	145	0	0	0	145
TORONTO LCD DOWNSVIEW C500 OAKDALE RD NORTH YORK ON M3N 2S0					
TOTAL	8972	0	0	0	8972
NORTH YORK RPO VICTORIA TERR19-1448 LAWRENCE AVE E NORTH YORK ON M4A 2S0					
TOTAL	0	0	0	0	0
NORTH YORK STN O70 WYNFORD DR NORTH YORK ON M4B 2B0					
TOTAL	5421	0	0	0	5421
TORONTO RPO O'CONNOR1095 O'CONNOR DR EAST YORK ON M4B 2T0					
TOTAL	39	0	0	0	39
TORONTO RPO COXWELL SHOPPER1630 DANFORTH AVE TORONTO ON M4C 1H0					
TOTAL	12	0	0	0	12
TORONTO STN H600 COMMISSIONERS ST TORONTO ON M4C 1L0					
TOTAL	14459	0	0	0	14459
TORONTO RPO SHOPPERS WORLD3003 DANFORTH AVE TORONTO ON M4C 1M0					
TOTAL	61	0	0	0	61
TORONTO RPO WOODBINE HTS1500 WOODBINE AVE EAST YORK ON M4C 4G0					
TOTAL	45	0	0	0	45
TORONTO RPO THE BEACHES2140A QUEEN ST E TORONTO ON M4E 1E0					
TOTAL	0	0	0	0	0
TORONTO RPO LEASIDE1601 BAYVIEW AVE TORONTO ON M4G 3B0					
TOTAL	34	0	0	0	34
TORONTO STN R70 WYNFORD DR NORTH YORK ON M4G 3T0					
TOTAL	3541	0	0	0	3541
TORONTO RPO THORNCLIFFERPO-45 OVERLEA BLVD TORONTO ON M4H 1C0					
TOTAL	110	0	0	0	110
TORONTO RPO DANFORTH755 DANFORTH AVE TORONTO ON M4J 0A0					
TOTAL	30	0	0	0	30
TORONTO STN J600 COMMISSIONERS ST TORONTO ON M4J 1L0					
TOTAL	13190	0	0	0	13190
TORONTO RPO CHESTER358 DANFORTH AVE TORONTO ON M4K 1M0					
TOTAL	32	0	0	0	32
TORONTO RPO ELLERBECKRP0-180 DANFORTH AVE TORONTO ON M4K 1N0					
TOTAL	24	0	0	0	24
GRAND TOTAL	470992	0	0	0	470992

	HOUSES	APARTMENTS	FARMS	BUSINESSES	TOTAL POINTS OF CALL
TORONTO RPO LESLIE ST1-1015 LAKE SHORE BLVD E TORONTO ON M4M 1B0					
TOTAL	15	0	0	0	15
TORONTO STN G600 COMMISSIONERS ST TORONTO ON M4M 1H0					
TOTAL	12112	0	0	0	12112
TORONTO RPO QUEEN CARLAWRPO-970 QUEEN ST E TORONTO ON M4M 1J0					
TOTAL	52	0	0	0	52
TORONTO PO K2708 YONGE ST TORONTO ON M4N 2H0					
TOTAL	0	0	0	0	0
TORONTO RPO BEDFORD3366 YONGE ST TORONTO ON M4N 2M0					
TOTAL	44	0	0	0	44
TORONTO RPO YONGE EGLINTON1-2300 YONGE ST TORONTO ON M4P 1E0					
TOTAL	37	0	0	0	37
TORONTO LCD K195 WICKSTEED AVE EAST YORK ON M4P 2E0					
TOTAL	6033	0	0	0	6033
TORONTO RPO BROADWAY1-2345 YONGE ST TORONTO ON M4P 3E0					
TOTAL	9	0	0	0	9
TORONTO RPO DAVISVILLE1881 YONGE ST TORONTO ON M4S 3C0					
TOTAL	30	0	0	0	30
TORONTO RPO ST CLAIR CENTRE1421 YONGE ST TORONTO ON M4T 1K0					
TOTAL	51	0	0	0	51
TORONTO LCD Q195 WICKSTEED AVE EAST YORK ON M4T 1L0					
TOTAL	5912	0	0	0	5912
TORONTO PO Q27 ST CLAIR AVE E TORONTO ON M4T 1M0					
TOTAL	21	0	0	0	21
TORONTO RPO HEATH YONGERPO-1507 YONGE ST TORONTO ON M4T 1Z0					
TOTAL	10	0	0	0	10
TORONTO RPO HUDSON BAY CTRRPO-20 BLOOR ST E TORONTO ON M4W 1A0					
TOTAL	65	0	0	0	65
TORONTO RPO MANULIFE305-55 BLOOR ST W TORONTO ON M4W 1B0					
TOTAL	63	0	0	0	63
TORONTO RPO GREENWIN SQUARE5-345 BLOOR ST E TORONTO ON M4W 3J0					
TOTAL	68	0	0	0	68
TORONTO LCD F675 COMMISSIONERS ST TORONTO ON M4W 3N0					
GRAND TOTAL	470992	0	0	0	470992

	HOUSES	APARTMENTS	FARMS	BUSINESSES	TOTAL POINTS OF CALL
TOTAL	1565	0	0	0	1565
TORONTO LCD CHARLES ST675 COMMISSIONERS ST TORONTO ON M4Y 1T0					
TOTAL	383	0	0	0	383
TORONTO RPO WOOD STREETRPO-465 YONGE ST TORONTO ON M4Y 1X0					
TOTAL	36	0	0	0	36
TORONTO PO F663A YONGE ST TORONTO ON M4Y 2T0					
TOTAL	42	0	0	0	42
TORONTO LCD ADELAIDE600 COMMISSIONERS ST TORONTO ON M5A 1C0					
TOTAL	3244	0	0	0	3244
TORONTO RPO CORKTOWNRPO-351 QUEEN ST E TORONTO ON M5A 1T0					
TOTAL	41	0	0	0	41
TORONTO RPO CABBAGETOWNRPO-467 PARLIAMENT ST TORONTO ON M5A 3A0					
TOTAL	26	0	0	0	26
TORONTO RPO DUNDAS SQUARERPO-10 DUNDAS ST E TORONTO ON M5B 2G0					
TOTAL	10	0	0	0	10
TORONTO RPO SHOPPER'S DRUGRPO-220 YONGE ST TORONTO ON M5B 2H0					
TOTAL	20	0	0	0	20
TORONTO LCD 2400-600 COMMISSIONERS ST TORONTO ON M5C 1A0					
TOTAL	235	0	0	0	235
TORONTO PO ADELAIDERPO-31 ADELAIDE ST E TORONTO ON M5C 2J0					
TOTAL	31	0	0	0	31
TORONTO RPO YONGE-KINGRPO-69 YONGE ST TORONTO ON M5E 1K0					
TOTAL	30	0	0	0	30
TORONTO RPO MARKET18 LOWER JARVIS ST TORONTO ON M5E 1N0					
TOTAL	1	0	0	0	1
TORONTO RPO BAY ADELAIDEC1-333 BAY ST TORONTO ON M5H 2R0					
TOTAL	3	0	0	0	3
TORONTO LCD 1600 COMMISSIONERS ST TORONTO ON M5J 1E0					
TOTAL	109	0	0	0	109
TORONTO PO ROYAL BANKRPO-200 BAY ST TORONTO ON M5J 2H0					
TOTAL	0	0	0	0	0
TORONTO RPO ROYL BANK PLAZASUB-200 BAY ST TORONTO ON M5J 2J0					
TOTAL	21	0	0	0	21
GRAND TOTAL	470992	0	0	0	470992

	HOUSES	APARTMENTS	FARMS	BUSINESSES	TOTAL POINTS OF CALL
TORONTO RPO BROOKFIELD RPO-181 BAY ST TORONTO ON M5J 2T0					
TOTAL	25	0	0	0	25
TORONTO STN TORONTO DOM66 WELLINGTON ST W TORONTO ON M5K 1A0					
TOTAL	25	0	0	0	25
TORONTO STN COMMERCE COURT25 KING ST W TORONTO ON M5L 1A0					
TOTAL	0	0	0	0	0
TORONTO RPO AVENUE LAWRENCE1-1500 AVENUE RD TORONTO ON M5M 3X0					
TOTAL	0	0	0	0	0
TORONTO STN S195 WICKSTEED AVE EAST YORK ON M5M 3Y0					
TOTAL	10299	0	0	0	10299
TORONTO RPO CASTLEWOOD1-550 EGLINTON AVE W TORONTO ON M5N 1B0					
TOTAL	127	0	0	0	127
TORONTO RPO DUPONT1-292 DUPONT ST TORONTO ON M5R 1V0					
TOTAL	1	0	0	0	1
TORONTO RPO AVENUE ROAD383-87 AVENUE RD TORONTO ON M5R 3R0					
TOTAL	13	0	0	0	13
TORONTO PO P875 BLOOR ST W TORONTO ON M5S 0A0					
TOTAL	60	0	0	0	60
TORONTO RPO THE COLONADE202-131 BLOOR ST W TORONTO ON M5S 1R0					
TOTAL	24	0	0	0	24
TORONTO RPO WALMERRPO-360A BLOOR ST W TORONTO ON M5S 1X0					
TOTAL	34	0	0	0	34
TORONTO LCD P66 RAY AVE YORK ON M5S 2J0					
TOTAL	3065	0	0	0	3065
TORONTO RPO COLLEGE SPADINA105-340 COLLEGE ST TORONTO ON M5T 1S0					
TOTAL	15	0	0	0	15
TORONTO LCD B675 COMMISSIONERS ST TORONTO ON M5T 2C0					
TOTAL	2655	0	0	0	2655
TORONTO RPO U.O.TRPO-214 COLLEGE ST TORONTO ON M5T 3A0					
TOTAL	0	0	0	0	0
TORONTO RPO DUNDAS SPADINA280 SPADINA AVE TORONTO ON M5T 3B0					
TOTAL	86	0	0	0	86
TORONTO RPO KING ST WRPO-388 KING ST W TORONTO ON M5V 1K0					
TOTAL	34	0	0	0	34
GRAND TOTAL	470992	0	0	0	470992

	HOUSES	APARTMENTS	FARMS	BUSINESSES	TOTAL POINTS OF CALL
TORONTO RPO QUEEN BEVERLY2-260 QUEEN ST W TORONTO ON M5V 1Z0					
TOTAL	34	0	0	0	34
TORONTO RPO QUEEN BATHURSTRPO-524 QUEEN ST W TORONTO ON M5V 2B0					
TOTAL	14	0	0	0	14
TORONTO RPO LIBERTY VILLAGE761 KING ST W TORONTO ON M5V 2K0					
TOTAL	7	0	0	0	7
TORONTO PO BRPO-119 SPADINA AVE TORONTO ON M5V 2L0					
TOTAL	0	0	0	0	0
TORONTO RPO QUEENS QUAY390 QUEENS QUAY W TORONTO ON M5V 3A0					
TOTAL	0	0	0	0	0
TORONTO STN A25 THE ESPLANADE TORONTO ON M5W 1A0					
TOTAL	594	0	0	0	594
TORONTO STN 1ST CAN PLACE1-100 KING ST W TORONTO ON M5X 1A0					
TOTAL	0	0	0	0	0
TORONTO RPO LAWRENCE PLAZA3110 BATHURST ST NORTH YORK ON M6A 1A0					
TOTAL	26	0	0	0	26
NORTH YORK RPO DUFFERIN1-770 LAWRENCE AVE W NORTH YORK ON M6A 2T0					
TOTAL	71	0	0	0	71
NORTH YORK RPO YORKDALE MALLRPO-3401 DUFFERIN ST NORTH YORK ON M6A 2V0					
TOTAL	27	0	0	0	27
NORTH YORK RPO MARLEERPO-373 MARLEE AVE NORTH YORK ON M6B 1V0					
TOTAL	10	0	0	0	10
TORONTO STN T66 RAY AVE YORK ON M6B 3T0					
TOTAL	6616	0	0	0	6616
TORONTO RPO NORTOWN922 EGLINTON AVE W TORONTO ON M6C 2C0					
TOTAL	1	0	0	0	1
TORONTO RPO WEST SIDE2343 EGLINTON AVE W YORK ON M6E 2S0					
TOTAL	25	0	0	0	25
TORONTO STN L66 RAY AVE YORK ON M6E 2W0					
TOTAL	23115	0	0	0	23115
TORONTO RPO EGLINTON-DUFFRPO-1840 EGLINTON AVE W TORONTO ON M6E 3S0					
TOTAL	33	0	0	0	33
TORONTO RPO COLLEGE SQUARE1-725 COLLEGE ST TORONTO ON M6G 1C0					
GRAND TOTAL	470992	0	0	0	470992

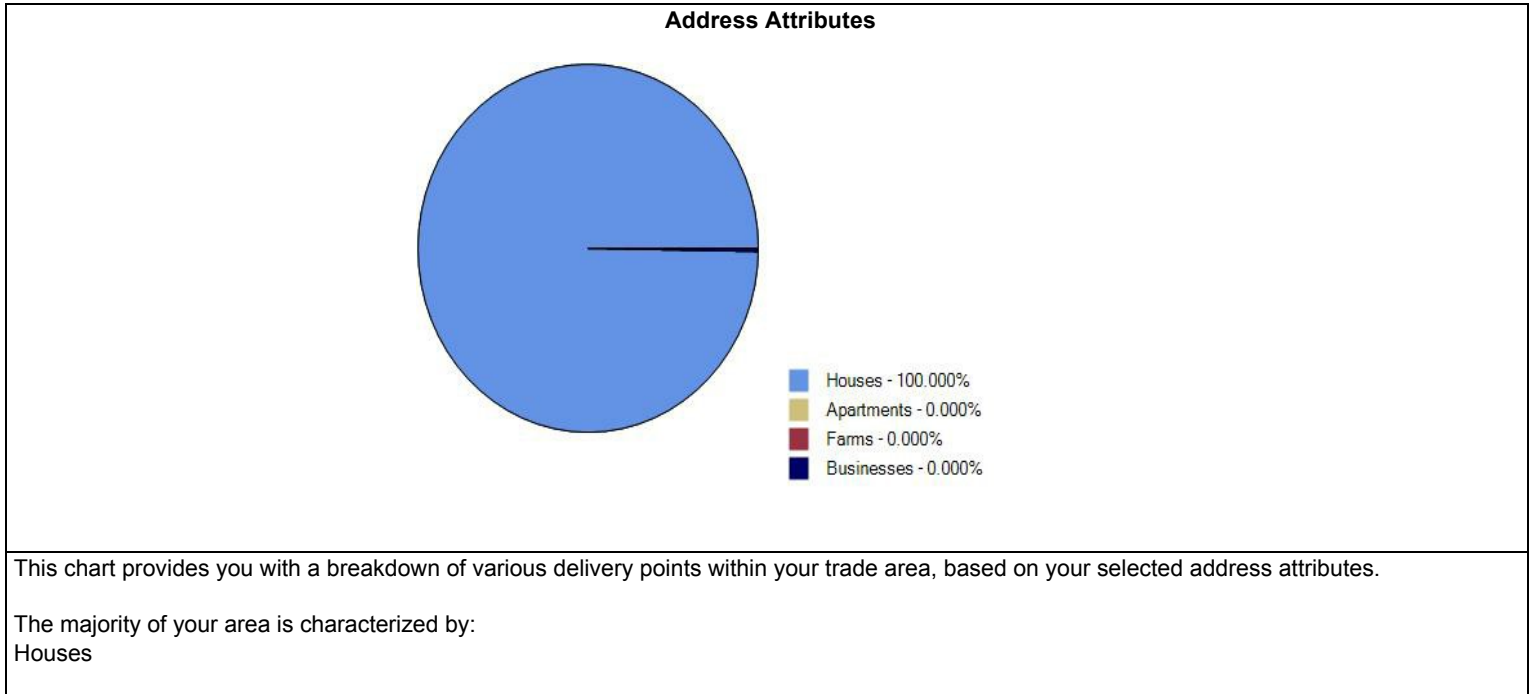
	HOUSES	APARTMENTS	FARMS	BUSINESSES	TOTAL POINTS OF CALL
TOTAL	65	0	0	0	65
TORONTO PO E875 BLOOR ST W TORONTO ON M6G 1M0					
TOTAL	120	0	0	0	120
TORONTO RPO BLOORCOURT998 BLOOR ST W TORONTO ON M6H 1L0					
TOTAL	33	0	0	0	33
TORONTO RPO GALLERIARPO-1245 DUPONT ST TORONTO ON M6H 2A0					
TOTAL	54	0	0	0	54
TORONTO LCD E66 RAY AVE YORK ON M6H 2X0					
TOTAL	15357	0	0	0	15357
TORONTO PO C119 OSSINGTON AVE TORONTO ON M6J 0A0					
TOTAL	84	0	0	0	84
TORONTO LCD C675 COMMISSIONERS ST TORONTO ON M6J 1J0					
TOTAL	13286	0	0	0	13286
TORONTO RPO DUNDAS DOVERCRTRPO-1260 DUNDAS ST W TORONTO ON M6J 1W0					
TOTAL	16	0	0	0	16
TORONTO RPO NORTH PARK1395 LAWRENCE AVE W TORONTO ON M6L 1A0					
TOTAL	10	0	0	0	10
NORTH YORK STN W66 RAY AVE YORK ON M6M 2P0					
TOTAL	10022	0	0	0	10022
TORONTO RPO KEELERPO-620 KEELE ST TORONTO ON M6N 3E0					
TOTAL	39	0	0	0	39
YORK RPO JANE PARK PLAZARPO-873 JANE ST YORK ON M6N 4C0					
TOTAL	56	0	0	0	56
TORONTO RPO JUNCTION GDNS2938 DUNDAS ST W TORONTO ON M6P 1Y0					
TOTAL	80	0	0	0	80
TORONTO RPO HIGH PARKRPO-1938 BLOOR ST W TORONTO ON M6P 3K0					
TOTAL	15	0	0	0	15
TORONTO RPO DUNDAS ST2238 DUNDAS ST W TORONTO ON M6R 3A0					
TOTAL	10	0	0	0	10
TORONTO RPO RONCESVALLES137 RONCESVALLES AVE TORONTO ON M6R 3L0					
TOTAL	19	0	0	0	19
TORONTO LCD 3145 THE WEST MALL ETOBICOKE ON M6S 1P0					
TOTAL	11033	0	0	0	11033
GRAND TOTAL	470992	0	0	0	470992

	HOUSES	APARTMENTS	FARMS	BUSINESSES	TOTAL POINTS OF CALL
TORONTO RPO BLOOR WEST2336 BLOOR ST W TORONTO ON M6S 1T0					
TOTAL	66	0	0	0	66
TORONTO STN PROVINCIAL GOVT2-969 EASTERN AVE TORONTO ON M7A 1A0					
TOTAL	0	0	0	0	0
TORONTO STN BRM B3-969 EASTERN AVE TORONTO ON M7Y 1A0					
TOTAL	0	0	0	0	0
ETOBICOKE RPO MIMICO2408 LAKE SHORE BLVD W ETOBICOKE ON M8V 1C0					
TOTAL	1	0	0	0	1
ETOBICOKE RPO LAKE SHORE VLG1-2850 LAKE SHORE BLVD W ETOBICOKE ON M8V 1H0					
TOTAL	0	0	0	0	0
ETOBICOKE STN N2-145 THE WEST MALL ETOBICOKE ON M8V 1J0					
TOTAL	9633	0	0	0	9633
ETOBICOKE RPO LONG BRANCH1-3701 LAKE SHORE BLVD W ETOBICOKE ON M8W 1P0					
TOTAL	54	0	0	0	54
ETOBICOKE RPO ROYAL YRK BLOOR1-3010 BLOOR ST W ETOBICOKE ON M8X 1C0					
TOTAL	0	0	0	0	0
ETOBICOKE RPO THE QUEENSWAY736A THE QUEENSWAY ETOBICOKE ON M8Y 1L0					
TOTAL	34	0	0	0	34
ETOBICOKE RPO STONEGATE1-150 BERRY RD ETOBICOKE ON M8Y 1W0					
TOTAL	15	0	0	0	15
ETOBICOKE PO USTN-145 THE WEST MALL ETOBICOKE ON M8Z 1A0					
TOTAL	1	0	0	0	1
ETOBICOKE LCD U2-145 THE WEST MALL ETOBICOKE ON M8Z 1P0					
TOTAL	7720	0	0	0	7720
ETOBICOKE PO D145 THE WEST MALL ETOBICOKE ON M9A 1A0					
TOTAL	5	0	0	0	5
ETOBICOKE LCD D145 THE WEST MALL ETOBICOKE ON M9A 1B0					
TOTAL	11297	0	0	0	11297
ETOBICOKE RPO THORNCREST4-1500 ISLINGTON AVE ETOBICOKE ON M9A 3L0					
TOTAL	3	0	0	0	3
ETOBICOKE RPO HUMBERTOWN CTR70-270 THE KINGSWAY ETOBICOKE ON M9A 3T0					
TOTAL	15	0	0	0	15
ETOBICOKE RPO SIX POINTS PLAZ100-5230 DUNDAS ST W ETOBICOKE ON M9B 1L0					
TOTAL	2	0	0	0	2
GRAND TOTAL	470992	0	0	0	470992

	HOUSES	APARTMENTS	FARMS	BUSINESSES	TOTAL POINTS OF CALL
ETOBICOKE RPO CLOVERDALE MALL174-250 THE EAST MALL ETOBICOKE ON M9B 3Y0					
TOTAL	41	0	0	0	41
ETOBICOKE RPO THE EAST MALL600 THE EAST MALL ETOBICOKE ON M9B 4B0					
TOTAL	7	0	0	0	7
ETOBICOKE RPO SHERWAY GARDENS RPO-25 THE WEST MALL ETOBICOKE ON M9C 1A0					
TOTAL	36	0	0	0	36
ETOBICOKE PO ESTN-145 THE WEST MALL ETOBICOKE ON M9C 1B0					
TOTAL	1	0	0	0	1
ETOBICOKE PO ASTN-145 THE WEST MALL ETOBICOKE ON M9C 1C0					
TOTAL	18	0	0	0	18
ETOBICOKE RPO BURNHAMTHORPERPO-666 BURNHAMTHORPE RD ETOBICOKE ON M9C 2X0					
TOTAL	18	0	0	0	18
ETOBICOKE LCD A2-145 THE WEST MALL ETOBICOKE ON M9C 2Y0					
TOTAL	6200	0	0	0	6200
TORONTO LCD WESTON B500 OAKDALE RD NORTH YORK ON M9L 1X0					
TOTAL	7185	0	0	0	7185
NORTH YORK STN WESTON B1-19 TORYORK DR NORTH YORK ON M9L 1Y0					
TOTAL	0	0	0	0	0
TORONTO RPO FINCHDALE MALL2550 FINCH AVE W TORONTO ON M9M 2J0					
TOTAL	52	0	0	0	52
YORK RPO OLD WESTON1995 WESTON RD YORK ON M9N 1W0					
TOTAL	75	0	0	0	75
YORK STN WESTON A66 RAY AVE YORK ON M9N 1X0					
TOTAL	13294	0	0	0	13294
NORTH YORK RPO JANE TRETHERWEY1533 JANE ST NORTH YORK ON M9N 2R0					
TOTAL	7	0	0	0	7
ETOBICOKE RPO MARTINWAY PLAZA1-415 THE WESTWAY ETOBICOKE ON M9R 1H0					
TOTAL	0	0	0	0	0
ETOBICOKE RPO RICHVIEW1-250 WINCOTT DR ETOBICOKE ON M9R 2R0					
TOTAL	29	0	0	0	29
ETOBICOKE RPO WESTWAY CENTRE7-1735 KIPLING AVE ETOBICOKE ON M9R 2Y0					
TOTAL	15	0	0	0	15
ETOBICOKE RPO THISTLETOWNRPO-900 ALBION RD ETOBICOKE ON M9V 1A0					
GRAND TOTAL	470992	0	0	0	470992

	HOUSES	APARTMENTS	FARMS	BUSINESSES	TOTAL POINTS OF CALL
TOTAL	10	0	0	0	10
ETOBICOKE RPO ALBION SHOPPERSRPO-1530 ALBION RD ETOBICOKE ON M9V 1B0					
TOTAL	184	0	0	0	184
ETOBICOKE STN C2110 KIPLING AVE ETOBICOKE ON M9V 1C0					
TOTAL	8311	0	0	0	8311
ETOBICOKE PO B2110 KIPLING AVE ETOBICOKE ON M9W 0A0					
TOTAL	0	0	0	0	0
ETOBICOKE RPO REXDALEA1-123 REXDALE BLVD ETOBICOKE ON M9W 1P0					
TOTAL	4	0	0	0	4
ETOBICOKE LCD B2110 KIPLING AVE ETOBICOKE ON M9W 4K0					
TOTAL	6851	0	0	0	6851
GRAND TOTAL	470992	0	0	0	470992

Below, you will find some insights to your trade area. The provided charts give a simple visual representation of some key characteristics of your target area in order to help you better understand the dynamics of your market.



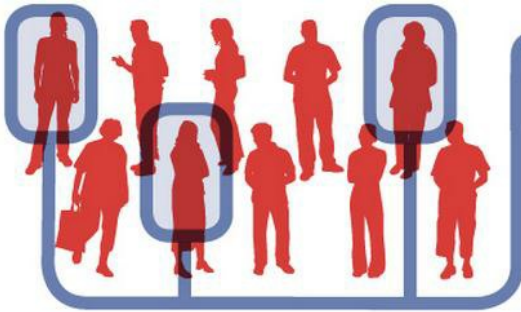
Did you know...

We can help you discover and harvest untapped market potential? We do so by generating a list of additional high value routes, typically located just outside your selected trade area, that meet or exceed your targeting criteria. To take advantage of this offering, simply accept our high value walk suggestions within the online application or request this feature when having an analysis run by our team of geospatial analysts.

Your Targeting Report

Powerful Data & Targeting

Looking for more ways to harvest the campaign-boosting powers of data and analytics? We have options...



It's time to be more direct. Reach more prospects with Canada Complete lists from Canada Post

Canada's best list just got even better. Our lists provide one of the largest reach in Canada, drawing from our mail delivery database of over 13 million residential addresses and close to a million business addresses. By customizing your mail with a name and/or an address you can provide an instant boost to open rates and responses. With our additional targeting filters, supplement your list by pinpointing specific audiences based on geographic, demographic, and lifestyle criteria that best match what your best prospects look like.

Why choose Canada Complete?

- We have more addresses than anyone else and with the best market penetration in the country
- Gain access to the most complete list that can provide nationwide access to apartments and suite numbers
- Validated addresses that you know are deliverable - save money by reducing returned mail
- Exclude existing customers by suppressing addresses you already have - only pay for the records you need
- Canada's best list for accessing Canadian New Movers - a segment that spends \$11B annually
- Enhance your list with a range of unique and exclusive targeting filters to reach your best audience

Ensure your mailing list is valid

Is bad address data hindering your campaign performance? Thanks to our **Smart Data Cleaner**, it doesn't have to. This easy-to-use online tool lets you clean and update your customer and prospect mailing lists. Not sure if your list needs a scrub? Get a free diagnostic first.

Reach people by name and boost response

Neighbourhood Mail™ is a powerful and effective marketing solution. To take your targeting to a whole new level use Canada Post Personalized Mail™, and reach Canadians by name and address at their place of residence or work. Studies have shown that 87% of Canadians are likely to read mail that is addressed to them personally, and that Personalized Mail™ garners three times as much attention as Neighbourhood Mail™.

Turn your customer data into actionable insight with our Advanced Analytics Services

Data is the fuel that drives campaign performance, but it can sometimes be a challenge to analyze and take action on it. That's where our dedicated team of analytics experts comes in. Through **penetration analysis, location intelligence, segmentation, modeling and profiling** they can help enhance your response potential by identifying your highest potential prospects.

Want to learn more about our powerful Data & Targeting Solutions?

Visit our website: www.canadapost.ca/datatargetingsolutions

email us at: data.targetingsolutions@canadapost.ca

If you wish to speak with one of our Data and Targeting specialists, call us at **1-877-281-4137**

1. **Address Attributes:** Describes the types of buildings present in your trade area, whether they are houses, apartments, farms, and/or businesses.
2. **All Points of Call:** The total number of physical locations (points of call) receiving your mailing on a given letter carrier's route, which can be houses, apartments, farms and/or businesses based on your selection criteria.
3. **Average Value:** The average value (%) of the chosen Statistics Canada demographic variables that can be associated with the letter carrier's route, which provides you with insight into your recipients.
4. **Cumulative Penetration:** The cumulative percentage of penetration associated with the letter carrier's routes based on the selected demographic variables.
5. **Cumulative Points of Call:** The cumulative point of call count associated with the letter carrier's routes, which has been calculated by adding the previous Delivery Mode rows in the report.
6. **Delivery Mode:** The area served by a letter carrier.
7. **Depot:** A postal facility established for the processing and delivery of mail. Example: Etobicoke, Ontario.
8. **Forward Sortation Area (FSA):** The first three characters (alpha-numeric-alpha) of a Postal Code ^{OM}, which represent a geographic area. Example: M9W
9. **Postal Station Summary:** This report indicates which postal stations are responsible for your targeted routes. The count of each point of call type (houses, apartments, farms, and/or businesses) is displayed for each depot. The total point of call count, listed at the end of the report, denotes the number of houses, apartments, farms, and/or businesses associated with each postal station.
10. **Route ID:** This represents the identifier assigned to each letter carrier's route. Its primary use is for the coordination of the mail delivery.
11. **Target Variables:** A report can have a minimum of one to a maximum of three Statistics Canada demographic variables selected. These variables are displayed in the value columns as a percentage (%) that can be associated with that entire Delivery Mode.
12. **Total Points of Call:** The total number of houses, apartments, farms, and/or businesses (based on your selection) associated with the depot in your Postal Station Summary. This number indicates how many pieces are required for each depot.
13. **Total:** This row represents the sum of each dwelling type (houses, apartments, farms, and/or businesses) within a depot.
14. **Valid for Mailings From:** Due to monthly route restructures, the results found within this report are valid between these dates. Mailing outside of these dates could cause delivery problems or pose a risk of non-delivery.
15. **Value1:** The percentage (%) of the Statistics Canada demographic variable that can be associated with that entire Delivery Mode. Example: Income \$100,000+